

Anti-CTNNB1 antibody (1-100) [S0MR] (STJ11101750)

GENERAL INFORMATION

Product Type	Primary antibodies
Applications	WB/IHC-P/IF/ICC/IP/ELISA
Host / Source	Rabbit
Reactivity	Human/Mouse/Rat

PRODUCT PROPERTIES

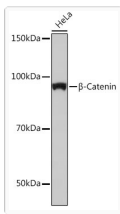
Clonality	Monoclonal
Concentration	Lot specific
Conjugation	Unconjugated
Purification	Affinity purification
Dilution Range	WB:1:500-1:1000 IHC-P:1:50-1:200 IF/CC:1:50-1:200 IP:0.5 Mu g-4 Mu g antibody for 400 Mu g-600 Mu g extracts of whole cells ELISA:Recommended starting concentration is 1 Mu g/mL. Please optimize the concentration based on your specif
Formulation	PBS with 0.05% Proclin300, 0.05% BSA, 50% Glycerol, pH 7.3.
Isotype	IgG
Molecular Weight	Protein Mw: 85kDa Observed Mw: 92kDa
Storage Instruction	Store at-20°C for up to 1 year from the date of receipt, and avoid repeat freeze-thaw cycles.

TARGET INFORMATION

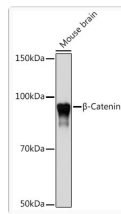
Gene ID	1499
Gene Symbol	CTNNB1
UniProt ID	CTNB1_HUMAN
Immunogen Region	1-100
Immunogen Sequence	MATQADLMELDMAMEPDRKA AVSHWQQQSYLDSGIHSGAT TTAPSLSGKGNPEEEDVDTS QVLYEWEQGFQSFTQEQVA DIDGQYAMTRAQRVRAAMFP
Specificity	A synthetic peptide corresponding to a sequence within amino acids 1-100 of human beta Catenin (P35222).

ADDITIONAL INFORMATION

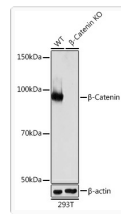
Note	STRICTLY FOR FURTHER SCIENTIFIC RESEARCH USE ONLY (RUO). MUST NOT TO BE USED IN DIAGNOSTIC OR THERAPEUTIC APPLICATIONS.
------	---



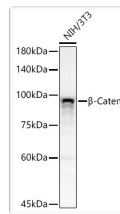
Western blot analysis of extracts of HeLa cells, using Beta-Catenin antibody (STJ11101750) at 1:1000 dilution. Secondary antibody: HRP Goat Anti-rabbit IgG (H+L) (STJS000856) at 1:10000 dilution. Lysates/proteins: 25 Mu g per lane. Blocking buffer: 3% non-fat dry milk in TBST. Detection: ECL Basic Kit. Exposure time: 10s.



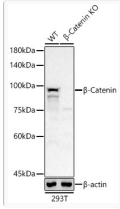
Western blot analysis of extracts of mouse brain, using Beta-Catenin antibody (STJ11101750) at 1:1000 dilution. Secondary antibody: HRP Goat Anti-rabbit IgG (H+L) (STJS000856) at 1:10000 dilution. Lysates/proteins: 25 Mu g per lane. Blocking buffer: 3% non-fat dry milk in TBST. Detection: ECL Basic Kit. Exposure time: 10s.



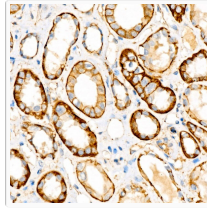
Western blot analysis of extracts from wild type (WT) and Beta-Catenin knockout (KO) 293T cells, using Beta-Catenin antibody (STJ11101750) at 1:1000 dilution. Secondary antibody: HRP Goat Anti-rabbit IgG (H+L) (STJS000856) at 1:10000 dilution. Lysates/proteins: 25 Mu g per lane. Blocking buffer: 3% non-fat dry milk in TBST. Detection: ECL Basic Kit. Exposure time: 10s.



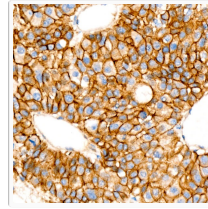
Western blot analysis of NIH/3T3, using Beta-Catenin antibody (STJ11101750) at 1:1000 dilution. Lysates/proteins: 25 Mu g per lane. Blocking buffer: 3% non-fat dry milk in TBST. Detection: ECL Basic Kit. Exposure time: 30s.



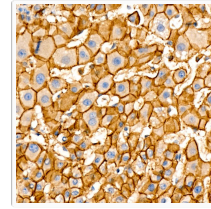
Western blot analysis of extracts from wild type (WT) and [KO Validated] Beta-Catenin knockout (KO) 293T (KO) cells, using [KO Validated] Beta-Catenin rabbit monoclonal antibody (STJ11101750) at 1:1000 dilution. Secondary antibody: HRP Goat Anti-rabbit IgG (H+L) (STJS000856) at 1:10000 dilution. Lysates/proteins: 25 Mu g per lane. Blocking buffer: 3% non-fat dry milk in TBST. Detection: ECL Basic Kit. Exposure time: 30s.



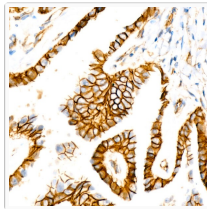
Immunohistochemistry analysis of paraffin-embedded human kidney using [KO Validated] Beta-Catenin rabbit monoclonal antibody (STJ11101750) at dilution of 1:100 (40x lens). Perform high pressure antigen retrieval with 10 mM citrate buffer pH 6. 0 before commencing with immunohistochemistry staining protocol.



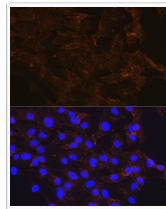
Immunohistochemistry analysis of paraffin-embedded human liver using [KO Validated] Beta-Catenin rabbit monoclonal antibody (STJ11101750) at dilution of 1:100 (40x lens). Perform high pressure antigen retrieval with 10 mM citrate buffer pH 6. 0 before commencing with immunohistochemistry staining protocol.



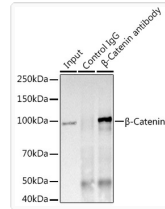
Immunohistochemistry analysis of paraffin-embedded human liver using [KO Validated] Beta-Catenin rabbit monoclonal antibody (STJ11101750) at dilution of 1:100 (40x lens). Perform high pressure antigen retrieval with 10 mM citrate buffer pH 6. 0 before commencing with immunohistochemistry staining protocol.



Immunohistochemistry analysis of paraffin-embedded human thyroid cancer using [KO Validated] Beta-Catenin rabbit monoclonal antibody (STJ11101750) at dilution of 1:100 (40x lens). Perform high pressure antigen retrieval with 10 mM citrate buffer pH 6. 0 before commencing with immunohistochemistry staining protocol.



Immunofluorescence analysis of C6 using [KO Validated] Beta-Catenin rabbit monoclonal antibody (STJ11101750) at dilution of 100 (40x lens). Blue: DAPI for nuclear staining.



Immunoprecipitation analysis of 600 Mu g extracts of mouse brain using 3 Mu g Beta-Catenin antibody (STJ11101750). Western blot was performed from the immunoprecipitate using Beta-Catenin (STJ11101750) at a dilution of 1:1000.