

Anti-RELA antibody (450-551) [S8MR] (STJ11101748)

GENERAL INFORMATION

Product Type	Primary antibodies
Applications	WB/IHC-P/IF/ICC/ELISA/ChIP
Host / Source	Rabbit
Reactivity	Human/Mouse/Rat/Monkey

PRODUCT PROPERTIES

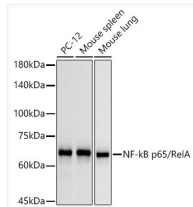
Clonality	Monoclonal
Concentration	Lot specific
Conjugation	Unconjugated
Purification	Affinity purification
Dilution Range	WB:1:5000-1:20000 IHC-P:1:500-1:2000 IF/ICC:1:50-1:200 ELISA:Recommended starting concentration is 1 Mu g/mL. Please optimize the concentration based on your specific assay requirements. ChIP:5 Mu g antibody for 10 Mu g-15 Mu g of Chr
Formulation	PBS with 0.05% Proclin300, 0.05% BSA, 50% Glycerol, pH 7.3.
Isotype	IgG
Molecular Weight	Protein Mw: 60kDa Observed Mw: 65kDa
Storage Instruction	Store at -20°C for up to 1 year from the date of receipt, and avoid repeat freeze-thaw cycles.

TARGET INFORMATION

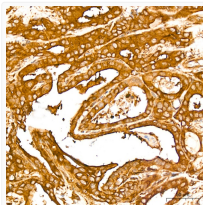
Gene ID	5970
Gene Symbol	RELA
UniProt ID	TF65_HUMAN
Immunogen Region	450-551
Immunogen Sequence	LGALLGNSTDPAVFTDLASV DNSEFQQLLNQGIPVAPHTT EPMLMEYPEAIRLVTGAQR PPDPAPAPLGLGAPLNGLLS GDEFSSIADMDFSALLSQI SS
Specificity	A synthetic peptide corresponding to a sequence within amino acids 450-551 of human NF-Kappa B p65 (Q04206).

ADDITIONAL INFORMATION

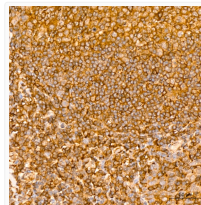
Note STRICTLY FOR FURTHER SCIENTIFIC RESEARCH USE ONLY (RUO). MUST NOT TO BE USED IN DIAGNOSTIC OR THERAPEUTIC APPLICATIONS.



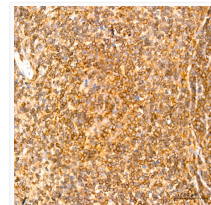
Western blot analysis of extracts of various lysates, using NF-kB p65/RelA rabbit monoclonal antibody (STJ11101748) at 1:1000 dilution. Secondary antibody: HRP Goat Anti-rabbit IgG (H+L) (STJS000856) at 1:10000 dilution. Lysates/proteins: 25 Mu g per lane. Blocking buffer: 3% non-fat dry milk in TBST. Detection: ECL Basic Kit. Exposure time: 10s.



Immunohistochemistry analysis of NF-kB p65/RelA in paraffin-embedded human thyroid cancer tissue using NF-kB p65/RelA rabbit monoclonal antibody (STJ11101748) at a dilution of 1:800 (40x lens). High pressure antigen retrieval was performed with 0.01 M citrate buffer (pH 6.0) prior to immunohistochemistry staining.



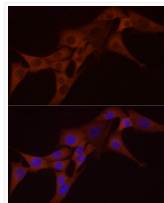
Immunohistochemistry analysis of NF-kB p65/RelA in paraffin-embedded human tonsil tissue using NF-kB p65/RelA rabbit monoclonal antibody (STJ11101748) at a dilution of 1:800 (40x lens). High pressure antigen retrieval was performed with 0.01 M citrate buffer (pH 6.0) prior to immunohistochemistry staining.



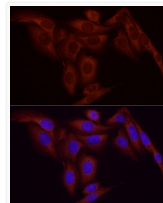
Immunohistochemistry analysis of NF-kB p65/RelA in paraffin-embedded mouse spleen tissue using NF-kB p65/RelA rabbit monoclonal antibody (STJ11101748) at a dilution of 1:800 (40x lens). High pressure antigen retrieval was performed with 0.01 M citrate buffer (pH 6.0) prior to immunohistochemistry staining.



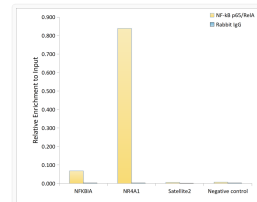
Immunohistochemistry analysis of NF-kB p65/RelA in paraffin-embedded rat spleen tissue using NF-kB p65/RelA rabbit monoclonal antibody (STJ11101748) at a dilution of 1:800 (40x lens). High pressure antigen retrieval was performed with 0.01 M citrate buffer (pH 6.0) prior to immunohistochemistry staining.



Immunofluorescence analysis of NIH/3T3 cells using NF-kB p65/RelA rabbit monoclonal antibody (STJ11101748) at dilution of 1:100 (40x lens). Blue: DAPI for nuclear staining.



Immunofluorescence analysis of U-2 OS cells using NF-kB p65/RelA rabbit monoclonal antibody (STJ11101748) at dilution of 1:100 (40x lens). Blue: DAPI for nuclear staining.



Chromatin immunoprecipitation analysis of extracts of HT-1080 treated by TNF-Alpha (20 ng/ml) at 37 °C for 30 minutes, using NF-kB p65/RelA rabbit monoclonal antibody (STJ11101748) and rabbit IgG. The amount of immunoprecipitated DNA was checked by quantitative PCR. Histogram was constructed by the ratios of the immunoprecipitated DNA to the input.