

Anti-ELAVL1 antibody (1-100) [S3MR] (STJ11101733)

GENERAL INFORMATION

Product Type	Primary antibodies
Applications	WB/IHC-P/IF/ICC/IP/ELISA
Host / Source	Rabbit
Reactivity	Human/Mouse/Rat

PRODUCT PROPERTIES

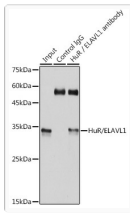
Clonality	Monoclonal
Concentration	Lot specific
Conjugation	Unconjugated
Purification	Affinity purification
Dilution Range	WB:1:1000-1:6000 IHC-P:1:200-1:2000 IF/CC:1:100-1:1000 IP:0.5 Mu g-4 Mu g antibody for 200 Mu g-400 Mu g extracts of whole cells ELISA:Recommended starting concentration is 1 Mu g/mL. Please optimize the concentration based on your s
Formulation	PBS with 0.02% Sodium Azide, 0.05% BSA, 50% Glycerol, pH 7.3.
Isotype	IgG
Molecular Weight	Protein Mw: 36kDa Observed Mw: 36kDa
Storage Instruction	Store at -20°C for up to 1 year from the date of receipt, and avoid repeat freeze-thaw cycles.

TARGET INFORMATION

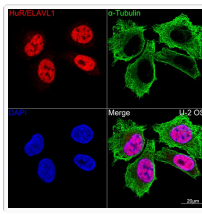
Gene ID	1994
Gene Symbol	ELAVL1
UniProt ID	ELAV1_HUMAN
Immunogen Region	1-100
Immunogen Sequence	MSNGYEDHMAEDCRGDIGRT NLIVNYLPQNMTQDELRSFLF SSIGEVESAKLIRDKVAGHS LGYGFVNYVTAKDAERAINL NGLRLQSKTIKVSYPSS
Specificity	A synthetic peptide corresponding to a sequence within amino acids 1-100 of human HuR/ELAVL1 (Q15717).

ADDITIONAL INFORMATION

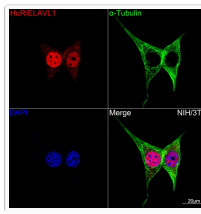
Note	STRICTLY FOR FURTHER SCIENTIFIC RESEARCH USE ONLY (RUO). MUST NOT TO BE USED IN DIAGNOSTIC OR THERAPEUTIC APPLICATIONS.
------	---



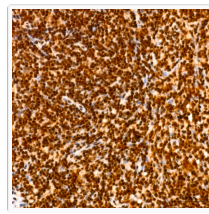
Immunoprecipitation analysis of 300 μ g extracts of 293T cells using 3 μ g HuR/ELAVL1 antibody (STJ11101733). Western blot was performed from the immunoprecipitate using HuR/ELAVL1 antibody (STJ11101733) at a dilution of 1:1000.



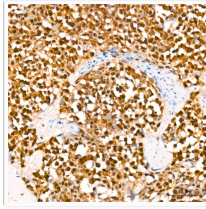
Confocal imaging of U-2 OS cells using [KO Validated] HuR/ELAVL1 Rabbit monoclonal antibody (STJ11101733, dilution 1:100) (Red). The cells were counterstained with Alpha-Tubulin Mouse monoclonal antibody (dilution 1:400) (Green). DAPI was used for nuclear staining (blue). Objective: 100x.



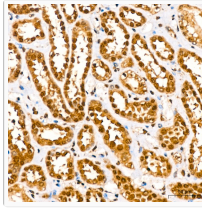
Confocal imaging of NIH/3T3 cells using [KO Validated] HuR/ELAVL1 Rabbit monoclonal antibody (STJ11101733, dilution 1:100) (Red). The cells were counterstained with Alpha-Tubulin Mouse monoclonal antibody (dilution 1:400) (Green). DAPI was used for nuclear staining (blue). Objective: 100x.



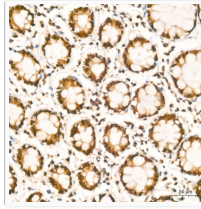
Immunohistochemistry analysis of HuR/ELAVL1 in paraffin-embedded mouse spleen using [KO Validated] HuR/ELAVL1 Rabbit monoclonal antibody (STJ11101733) at dilution of 1:200 (40x lens). Perform high pressure antigen retrieval with 10 mM citrate buffer pH 6.0 before commencing with immunohistochemistry staining protocol.



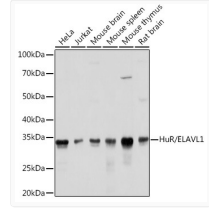
Immunohistochemistry analysis of HuR/ELAVL1 in paraffin-embedded human tonsil using [KO Validated] HuR/ELAVL1 Rabbit monoclonal antibody (STJ11101733) at dilution of 1:200 (40x lens). Perform high pressure antigen retrieval with 10 mM citrate buffer pH 6.0 before commencing with immunohistochemistry staining protocol.



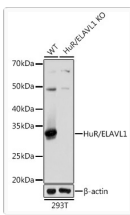
Immunohistochemistry analysis of HuR/ELAVL1 in paraffin-embedded human kidney using [KO Validated] HuR/ELAVL1 Rabbit monoclonal antibody (STJ11101733) at dilution of 1:200 (40x lens). Perform high pressure antigen retrieval with 10 mM citrate buffer pH 6.0 before commencing with immunohistochemistry staining protocol.



Immunohistochemistry analysis of HuR/ELAVL1 in paraffin-embedded human colon carcinoma using [KO Validated] HuR/ELAVL1 Rabbit monoclonal antibody (STJ11101733) at dilution of 1:200 (40x lens). Perform high pressure antigen retrieval with 10 mM citrate buffer pH 6.0 before commencing with immunohistochemistry staining protocol.



Western blot analysis of various lysates using [KO Validated] HuR/ELAVL1 Rabbit monoclonal antibody (STJ11101733) at 1:1000 dilution. Secondary antibody: HRP Goat Anti-Rabbit IgG (H+L) (STJS000856) at 1:10000 dilution. Lysates/proteins: 25 μ g per lane. Blocking buffer: 3% nonfat dry milk in TBST. Detection: ECL Basic Kit. Exposure time: 1s.



Western blot analysis of lysates from wild type (WT) and HuR/ELAVL1 knockout (KO) 293T cells, using [KO Validated] HuR/ELAVL1 Rabbit monoclonal antibody (STJ11101733) at 1:1000 dilution. Secondary antibody: HRP Goat Anti-Rabbit IgG (H+L) (STJS000856) at 1:10000 dilution. Lysates/proteins: 25 μ g per lane. Blocking buffer: 3% nonfat dry milk in TBST. Detection: ECL Basic Kit. Exposure time: 1s.