

Anti-VIM antibody (367-466) [S7MR] (STJ11101727)

GENERAL INFORMATION

Product Type	Primary antibodies
Applications	WB/IHC-P/IF/ICC/IP/ELISA
Host / Source	Rabbit
Reactivity	Human/Mouse/Rat

PRODUCT PROPERTIES

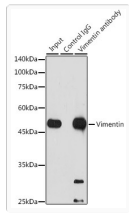
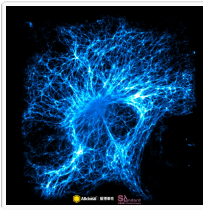
Clonality	Monoclonal
Concentration	Lot specific
Conjugation	Unconjugated
Purification	Affinity purification
Dilution Range	WB:1:20000-1:120000 IHC-P:1:1000-1:4000 IF/CC:1:200-1:2000 IP:0.5 Mu g-4 Mu g antibody for 200 Mu g-400 Mu g extracts of whole cells ELISA:Recommended starting concentration is 1 Mu g/mL. Please optimize the concentration based on yo
Formulation	PBS with 0.05% Proclin300, 0.05% BSA, 50% Glycerol, pH 7.3.
Isotype	IgG
Molecular Weight	Protein Mw: 54kDa Observed Mw: 54kDa
Storage Instruction	Store at-20°C for up to 1 year from the date of receipt, and avoid repeat freeze-thaw cycles.

TARGET INFORMATION

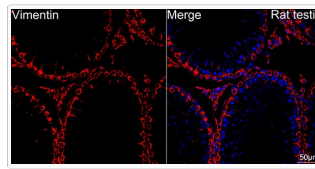
Gene ID	7431
Gene Symbol	VIM
UniProt ID	VIME_HUMAN
Immunogen Region	367-466
Immunogen Sequence	DEIQNMKEEMARHLREYQDL LNVKMALDIEIATYRKLEG EESRISLPLPNFSSLNLRRET NLDLPLVDTHSKRTLLIKT VETRDGQVINETSQHHDDLE
Specificity	A synthetic peptide corresponding to a sequence within amino acids 367-466 of human Vimentin (P08670).

ADDITIONAL INFORMATION

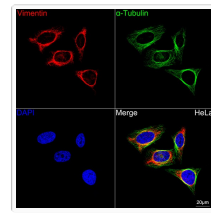
Note	STRICTLY FOR FURTHER SCIENTIFIC RESEARCH USE ONLY (RUO). MUST NOT TO BE USED IN DIAGNOSTIC OR THERAPEUTIC APPLICATIONS.
------	-------------------------------------------------------------------------------------------------------------------------



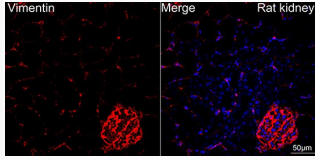
Immunoprecipitation analysis of 300 Mu g extracts of Jurkat cells using 3 Mu g [KD Validated] Vimentin Rabbit monoclonal antibody (STJ11101727). Western blot was performed from the immunoprecipitate using Vimentin antibody (STJ11101727) at a dilution of 1:1000.



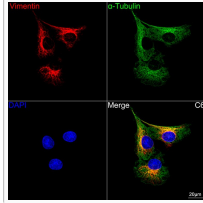
Confocal imaging of paraffin-embedded Rat testis tissue using [KD Validated] Vimentin Rabbit monoclonal antibody (STJ11101727, dilution 1:200) followed by a further incubation with Cy3 Goat Anti-Rabbit IgG (H+L) (dilution 1:500) (Red). DAPI was used for nuclear staining (Blue). High pressure antigen retrieval performed with 0. 01M Citrate Buffer (pH 6. 0) prior to IF staining. Objective: 40x.



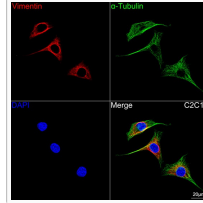
Confocal imaging of HeLa cells using [KD Validated] Vimentin Rabbit monoclonal antibody (STJ11101727, dilution 1:200) followed by a further incubation with Cy3 Goat Anti-Rabbit IgG (H+L) (dilution 1:500) (Red). The cells were counterstained with Alpha-Tubulin Mouse monoclonal antibody (dilution 1:400) followed by incubation with ABflo® 488-conjugated Goat Anti-Mouse IgG (H+L) antibody (dilution 1:500) (Green). DAPI was used for nuclear staining (Blue). Objective: 100x.



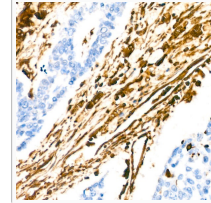
Confocal imaging of paraffin-embedded Rat kidney tissue using [KD Validated] Vimentin Rabbit monoclonal antibody (STJ11101727, dilution 1:200) followed by a further incubation with Cy3 Goat Anti-Rabbit IgG (H+L) (dilution 1:500) (Red). DAPI was used for nuclear staining (Blue). High pressure antigen retrieval performed with 0. 01M Citrate Buffer (pH 6. 0) prior to IF staining. Objective: 40x.



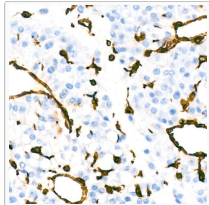
Confocal imaging of C6 cells using [KD Validated] Vimentin Rabbit monoclonal antibody (STJ11101727, dilution 1:200) followed by a further incubation with Cy3 Goat Anti-Rabbit IgG (H+L) (dilution 1:500) (Red). The cells were counterstained with Alpha-Tubulin Mouse monoclonal antibody (dilution 1:400) followed by incubation with ABflo® 488-conjugated Goat Anti-Mouse IgG (H+L) antibody (dilution 1:500) (Green). DAPI was used for nuclear staining (Blue). Objective: 100x.



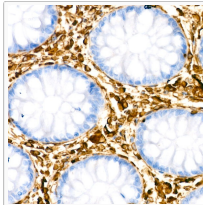
Confocal imaging of C2C12 cells using [KD Validated] Vimentin Rabbit monoclonal antibody (STJ11101727, dilution 1:200) followed by a further incubation with Cy3 Goat Anti-Rabbit IgG (H+L) (dilution 1:500) (Red). The cells were counterstained with Alpha-Tubulin Mouse monoclonal antibody (dilution 1:400) followed by incubation with ABflo® 488-conjugated Goat Anti-Mouse IgG (H+L) antibody (dilution 1:500) (Green). DAPI was used for nuclear staining (Blue). Objective: 100x.



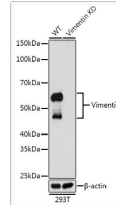
Immunohistochemistry analysis of Vimentin in paraffin-embedded human lung cancer using [KD Validated] Vimentin Rabbit monoclonal antibody (STJ11101727) at dilution of 1:100 (40x lens). Perform microwave antigen retrieval with 10 mM PBS buffer pH 7. 2 before commencing with immunohistochemistry staining protocol.



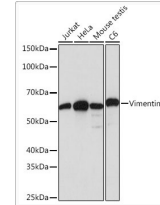
Immunohistochemistry analysis of Vimentin in paraffin-embedded human liver cancer using [KD Validated] Vimentin Rabbit monoclonal antibody (STJ11101727) at dilution of 1:100 (40x lens). Perform microwave antigen retrieval with 10 mM PBS buffer pH 7. 2 before commencing with immunohistochemistry staining protocol.



Immunohistochemistry analysis of Vimentin in paraffin-embedded human colon using [KD Validated] Vimentin Rabbit monoclonal antibody (STJ11101727) at dilution of 1:100 (40x lens). Perform microwave antigen retrieval with 10 mM PBS buffer pH 7. 2 before commencing with immunohistochemistry staining protocol.



Western blot analysis of lysates from wild type (WT) and Vimentin knockdown (KD) 293T cells, using [KD Validated] Vimentin Rabbit monoclonal antibody (STJ11101727) at 1:1000 dilution. Secondary antibody: HRP Goat Anti-Rabbit IgG (H+L) (STJS000856) at 1:10000 dilution. Lysates/proteins: 25 Mu g per lane. Blocking buffer: 3% nonfat dry milk in TBST. Detection: ECL Basic Kit. Exposure time: 1s.



Western blot analysis of various lysates using [KD Validated] Vimentin Rabbit monoclonal antibody (STJ11101727) at 1:1000 dilution. Secondary antibody: HRP Goat Anti-Rabbit IgG (H+L) (STJS000856) at 1:10000 dilution. Lysates/proteins: 25 Mu g per lane. Blocking buffer: 3% nonfat dry milk in TBST. Detection: ECL Basic Kit. Exposure time: 1s.