

## Anti-IKBKB antibody (450-756) [S6MR] (STJ11101726)

### GENERAL INFORMATION

Product Type	Primary antibodies
Applications	IF/ICC/ELISA
Host / Source	Rabbit
Reactivity	Human/Mouse/Rat

### PRODUCT PROPERTIES

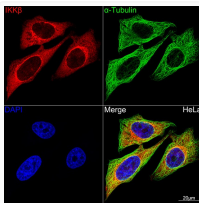
Clonality	Monoclonal
Concentration	Lot specific
Conjugation	Unconjugated
Purification	Affinity purification
Dilution Range	IF/ICC:1:50-1:200 ELISA:Recommended starting concentration is 1 µg/mL. Please optimize the concentration based on your specific assay requirements.
Formulation	PBS with 0.02% Sodium Azide, 0.05% BSA, 50% Glycerol, pH 7.3.
Isotype	IgG
Molecular Weight	Protein Mw: 87kDa Observed Mw: 87kDa
Storage Instruction	Store at -20°C for up to 1 year from the date of receipt, and avoid repeat freeze-thaw cycles.

### TARGET INFORMATION

Gene ID	<a href="#">3551</a>
Gene Symbol	<a href="#">IKBKB</a>
UniProt ID	<a href="#">IKKB_HUMAN</a>
Immunogen Region	450-756
Immunogen Sequence	GQRAAMNLLRNNSCLSMMK NSMASMSQQLKAKLDFFKTS IQIDLEKYSEQTEFGITSDK LLLAWREMEQAVELCGRENE VKLLVERMMALQTDIVDLQR SPMGRKQGGTLDLLEEQARE LYRRLREKPRDQRTGDSQE MVRLLLQAIQSFEKKVRYIY TQLSKTVVCKQKALELLPKV EEVVSLMNEDEKTVVRLQEK RQKELWNLLKIACSKVRGPV SGSPDSMNASRLSQPGQLM
Specificity	Recombinant fusion protein containing a sequence corresponding to amino acids 450-756 of human IKK Beta (O14920).

### ADDITIONAL INFORMATION

Note STRICTLY FOR FURTHER SCIENTIFIC RESEARCH USE ONLY (RUO). MUST NOT TO BE USED IN DIAGNOSTIC OR THERAPEUTIC APPLICATIONS.



Confocal imaging of HeLa cells using IKK Beta Rabbit monoclonal antibody (STJ11101726, dilution 1:100) (Red). The cells were counterstained with Alpha-Tubulin Mouse monoclonal antibody (dilution 1:400) (Green). DAPI was used for nuclear staining (blue). Objective: 100x.