

Anti-NQO1 antibody (1-100) [S4MR] (STJ11101714)

GENERAL INFORMATION

Product Type	Primary antibodies
Applications	WB/IF/ICC/ELISA
Host / Source	Rabbit
Reactivity	Human/Mouse/Rat

PRODUCT PROPERTIES

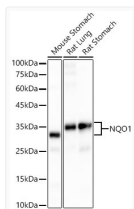
Clonality	Monoclonal
Concentration	Lot specific
Conjugation	Unconjugated
Purification	Affinity purification
Dilution Range	WB:1:20000-1:120000 IF/CC:1:300-1:1200 ELISA:Recommended starting concentration is 1 Mu g/mL. Please optimize the concentration based on your specific assay requirements.
Formulation	PBS with 0.05% Proclin300, 0.05% BSA, 50% Glycerol, pH7.3.
Isotype	IgG
Molecular Weight	Protein Mw: 31kDa Observed Mw: 31kDa
Storage Instruction	Store at -20°C for up to 1 year from the date of receipt, and avoid repeat freeze-thaw cycles.

TARGET INFORMATION

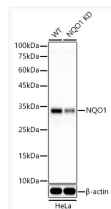
Gene ID	1728
Gene Symbol	NQO1
UniProt ID	NQO1_HUMAN
Immunogen Region	1-100
Immunogen Sequence	MVGRRALIVLAHSERTSFNY AMKEAAAAALKKKGWEVVES DLYAMNFNPIISRKDTGKL KDPANFQYPAESVLAYKEGH LSPDIVAEQKKLEAADLVIF
Specificity	A synthetic peptide corresponding to a sequence within amino acids 1-100 of human NQO1 (P15559).

ADDITIONAL INFORMATION

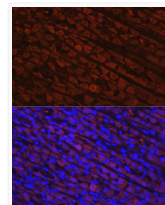
Note STRICTLY FOR FURTHER SCIENTIFIC RESEARCH USE ONLY (RUO). MUST NOT TO BE USED IN DIAGNOSTIC OR THERAPEUTIC APPLICATIONS.



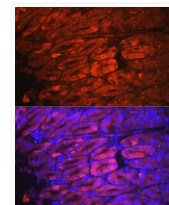
Western blot analysis of extracts of various lysates, using NQO1 antibody (STJ11101714) at 1:20000 dilution. Secondary antibody: HRP Goat Anti-rabbit IgG (H+L) (STJS000856) at 1:10000 dilution. Lysates/proteins: 25 Mu g per lane. Blocking buffer: 3% non-fat dry milk in TBST. Detection: ECL Basic Kit. Exposure time: 10s.



Western blot analysis of extracts from wild type (WT) and NQO1 knockdown (KD) HeLa cells, using NQO1 antibody (STJ11101714) at 1:20000 dilution. Secondary antibody: HRP Goat Anti-rabbit IgG (H+L) (STJS000856) at 1:10000 dilution. Lysates/proteins: 25 Mu g per lane. Blocking buffer: 3% non-fat dry milk in TBST. Detection: ECL Basic Kit. Exposure time: 10s.



Immunofluorescence analysis of Rat stomach using NQO1 antibody (STJ11101714) at dilution of 1:300 (40x lens). Blue: DAPI for nuclear staining.



Immunofluorescence analysis of mouse stomach using NQO1 antibody (STJ11101714) at dilution of 1:300 (40x lens). Blue: DAPI for nuclear staining.