

Anti-E2F1 antibody (338-437) [S9MR] (STJ11101709)

GENERAL INFORMATION

Product Type	Primary antibodies
Applications	WB/IP/ELISA
Host / Source	Rabbit
Reactivity	Human/Mouse/Rat

PRODUCT PROPERTIES

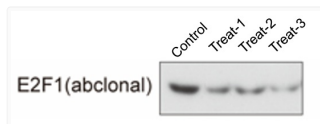
Clonality	Monoclonal
Concentration	Lot specific
Conjugation	Unconjugated
Purification	Affinity purification
Dilution Range	WB:1:500-1:2000 IP:0.5 Mu g-4 Mu g antibody for 200 Mu g-400 Mu g extracts of whole cells ELISA:Recommended starting concentration is 1 Mu g/mL. Please optimize the concentration based on your specific assay requirements.
Formulation	PBS with 0.02% Sodium Azide, 0.05% BSA, 50% Glycerol, pH 7.3.
Isotype	IgG
Molecular Weight	Protein Mw: 47kDa Observed Mw: 70kDa
Storage Instruction	Store at -20°C for up to 1 year from the date of receipt, and avoid repeat freeze-thaw cycles.

TARGET INFORMATION

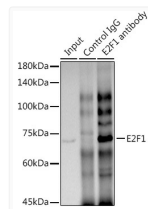
Gene ID	1869
Gene Symbol	E2F1
UniProt ID	E2F1_HUMAN
Immunogen Region	338-437
Immunogen Sequence	PPSSLTTDPSQLLSLEQEP LLSRMGSLRAPVDEDRLSPL VAADSLLEHVREDFSGLLPE EFISLSPHEALDYHFGLEE GEGIRDLFDCDFGLTPLDF
Specificity	A synthetic peptide corresponding to a sequence within amino acids 338-437 of human E2F1 (Q01094).

ADDITIONAL INFORMATION

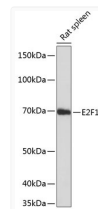
Note STRICTLY FOR FURTHER SCIENTIFIC RESEARCH USE ONLY (RUO). MUST NOT TO BE USED IN DIAGNOSTIC OR THERAPEUTIC APPLICATIONS.



Immunoprecipitation analysis of 300 Mu g extracts of HT-29 cells using 3 Mu g E2F1 antibody (STJ11101709). Western blot was performed from the immunoprecipitate using E2F1 antibody (STJ11101709) at a dilution of 1:1000.



Western blot analysis of lysates from rat spleen, using E2F1 Rabbit monoclonal antibody (STJ11101709) at 1:1000 dilution. Secondary antibody: HRP Goat Anti-Rabbit IgG (H+L) (STJS000856) at 1:10000 dilution. Lysates/proteins: 25 Mu g per lane. Blocking buffer: 3% nonfat dry milk in TBST. Detection: ECL Basic Kit. Exposure time: 1min.



Western blot analysis of various lysates using E2F1 Rabbit monoclonal antibody (STJ11101709) at 1:1000 dilution. Secondary antibody: HRP Goat Anti-Rabbit IgG (H+L) (STJS000856) at 1:10000 dilution. Lysates/proteins: 25 Mu g per lane. Blocking buffer: 3% nonfat dry milk in TBST. Detection: ECL Basic Kit. Exposure time: 1s.

