

Anti-YY1 antibody (200-300) [S4MR] (STJ11101704)

GENERAL INFORMATION

Product Type	Primary antibodies
Applications	WB/IF/ICC/IP/ELISA/ChIP
Host / Source	Rabbit
Reactivity	Human/Mouse/Rat

PRODUCT PROPERTIES

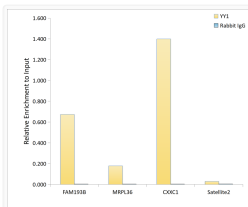
Clonality	Monoclonal
Concentration	Lot specific
Conjugation	Unconjugated
Purification	Affinity purification
Dilution Range	WB:1:1000-1:6000 IF/CC:1:50-1:400 IP:0.5 Mu g-4 Mu g antibody for 200 Mu g-400 Mu g extracts of whole cells ELISA:Recommended starting concentration is 1 Mu g/mL. Please optimize the concentration based on your specific assay requirement
Formulation	PBS with 0.02% Sodium Azide, 0.05% BSA, 50% Glycerol, pH 7.3.
Isotype	IgG
Molecular Weight	Protein Mw: 45kDa Observed Mw: 60kDa
Storage Instruction	Store at -20°C for up to 1 year from the date of receipt, and avoid repeat freeze-thaw cycles.

TARGET INFORMATION

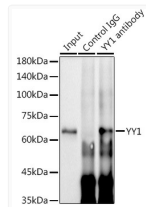
Gene ID	7528
Gene Symbol	YY1
UniProt ID	TYY1_HUMAN
Immunogen Region	200-300
Immunogen Sequence	PGNKKWEQKQVQIKTLEGEF SVTMWSSDEKDKIDHETVVE EQIIGENSPPDYSEYMTGKK LPPGGIPGIDLSDPKQLAEF ARMKPRKIKEDDAPRTIACP H
Specificity	A synthetic peptide corresponding to a sequence within amino acids 200-300 of human YY1 (P25490).

ADDITIONAL INFORMATION

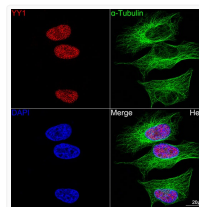
Note STRICTLY FOR FURTHER SCIENTIFIC RESEARCH USE ONLY (RUO). MUST NOT TO BE USED IN DIAGNOSTIC OR THERAPEUTIC APPLICATIONS.



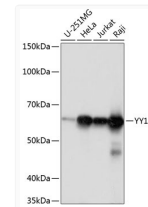
Chromatin immunoprecipitation analysis of extracts of 293T cells, using YY1 antibody (STJ11101704) and rabbit IgG. The amount of immunoprecipitated DNA was checked by quantitative PCR. Histogram was constructed by the ratios of the immunoprecipitated DNA to the input.



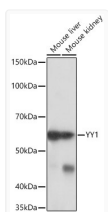
Immunoprecipitation analysis of 300 Mu g extracts of HeLa cells using 3 Mu g YY1 antibody (STJ11101704). Western blot was performed from the immunoprecipitate using YY1 antibody (STJ11101704) at a dilution of 1:2000.



Confocal imaging of HeLa cells using YY1 Rabbit monoclonal antibody (STJ11101704, dilution 1:50) (Red). The cells were counterstained with Alpha-Tubulin Mouse monoclonal antibody (dilution 1:400) (Green). DAPI was used for nuclear staining (blue). Objective: 100x.



Western blot analysis of various lysates using YY1 Rabbit monoclonal antibody (STJ11101704) at 1:1000 dilution. Secondary antibody: HRP Goat Anti-Rabbit IgG (H+L) (STJS000856) at 1:10000 dilution. Lysates/proteins: 25 Mu g per lane. Blocking buffer: 3% nonfat dry milk in TBST. Detection: ECL Basic Kit. Exposure time: 1s.



Western blot analysis of various lysates using YY1 Rabbit monoclonal antibody (STJ11101704) at 1:1000 dilution. Secondary antibody: HRP Goat Anti-Rabbit IgG (H+L) (STJS000856) at 1:10000 dilution. Lysates/proteins: 25 Mu g per lane. Blocking buffer: 3% nonfat dry milk in TBST. Detection: ECL Basic Kit. Exposure time: 10s.