

Anti-TRIM28 antibody (250-350) [S3MR] (STJ11101703)

GENERAL INFORMATION

Product Type	Primary antibodies
Applications	WB/IHC-P/IP/ELISA
Host / Source	Rabbit
Reactivity	Human/Mouse/Rat

PRODUCT PROPERTIES

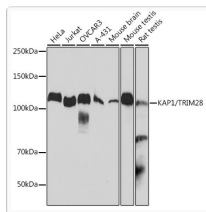
Clonality	Monoclonal
Concentration	Lot specific
Conjugation	Unconjugated
Purification	Affinity purification
Dilution Range	WB:1:1000-1:6000 IHC-P:1:200-1:2000 IP:0.5 Mu g-4 Mu g antibody for 200 Mu g-400 Mu g extracts of whole cells ELISA:Recommended starting concentration is 1 Mu g/mL. Please optimize the concentration based on your specific assay requiremen
Formulation	PBS with 0.02% Sodium Azide, 0.05% BSA, 50% Glycerol, pH 7.3.
Isotype	IgG
Molecular Weight	Protein Mw: 89kDa Observed Mw: 110kDa
Storage Instruction	Store at-20°C for up to 1 year from the date of receipt, and avoid repeat freeze-thaw cycles.

TARGET INFORMATION

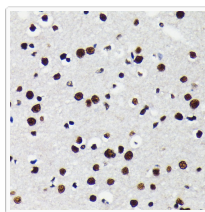
Gene ID	10155
Gene Symbol	TRIM28
UniProt ID	TIF1B_HUMAN
Immunogen Region	250-350
Immunogen Sequence	RNQRKLLASLVKRLGDKHAT LQKSTKEVRSSIRQVSDVQK RVQVDVKMAILQIMKELNKR GRVLVNDQAQKVTEGQQRLE RQHWTMTKIQKHQEHLRFA S
Specificity	A synthetic peptide corresponding to a sequence within amino acids 250-350 of human KAP1/TRIM28 (Q13263).

ADDITIONAL INFORMATION

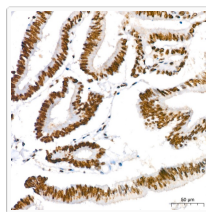
Note	STRICTLY FOR FURTHER SCIENTIFIC RESEARCH USE ONLY (RUO). MUST NOT TO BE USED IN DIAGNOSTIC OR THERAPEUTIC APPLICATIONS.
------	---



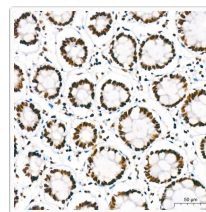
Western blot analysis of extracts of various cell lines, using KAP1/TRIM28 antibody (STJ11101703) at 1:1000 dilution. Secondary antibody: HRP Goat Anti-rabbit IgG (H+L) (STJS000856) at 1:10000 dilution. Lysates/proteins: 25 Mu g per lane. Blocking buffer: 3% non-fat dry milk in TBST. Detection: ECL Basic Kit. Exposure time: 10s.



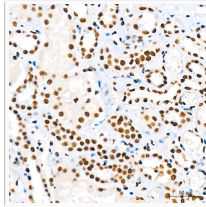
Immunohistochemistry analysis of paraffin-embedded mouse brain using KAP1/TRIM28 antibody (STJ11101703) at dilution of 1:100 (40x lens). Perform microwave antigen retrieval with 10 mM PBS buffer pH 7. 2 before commencing with immunohistochemistry staining protocol.



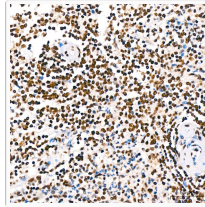
Immunohistochemistry analysis of paraffin-embedded human colon carcinoma using KAP1/TRIM28 rabbit monoclonal antibody (STJ11101703) at dilution of 1:200 (40x lens). Perform high pressure antigen retrieval with 10 mM citrate buffer pH 6. 0 before commencing with immunohistochemistry staining protocol.



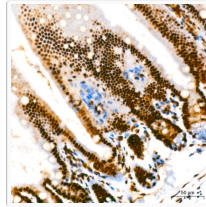
Immunohistochemistry analysis of paraffin-embedded human colon using KAP1/TRIM28 rabbit monoclonal antibody (STJ11101703) at dilution of 1:200 (40x lens). Perform high pressure antigen retrieval with 10 mM citrate buffer pH 6. 0 before commencing with immunohistochemistry staining protocol.



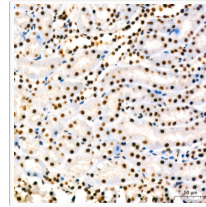
Immunohistochemistry analysis of paraffin-embedded human kidney using KAP1/TRIM28 rabbit monoclonal antibody (STJ11101703) at dilution of 1:200 (40x lens). Perform high pressure antigen retrieval with 10 mM citrate buffer pH 6. 0 before commencing with immunohistochemistry staining protocol.



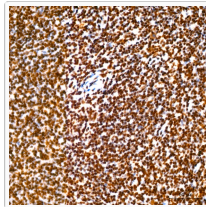
Immunohistochemistry analysis of paraffin-embedded human spleen using KAP1/TRIM28 rabbit monoclonal antibody (STJ11101703) at dilution of 1:200 (40x lens). Perform high pressure antigen retrieval with 10 mM citrate buffer pH 6. 0 before commencing with immunohistochemistry staining protocol.



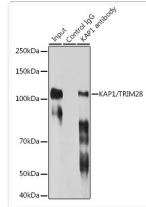
Immunohistochemistry analysis of paraffin-embedded mouse intestine using KAP1/TRIM28 rabbit monoclonal antibody (STJ11101703) at dilution of 1:200 (40x lens). Perform high pressure antigen retrieval with 10 mM citrate buffer pH 6. 0 before commencing with immunohistochemistry staining protocol.



Immunohistochemistry analysis of paraffin-embedded mouse kidney using KAP1/TRIM28 rabbit monoclonal antibody (STJ11101703) at dilution of 1:200 (40x lens). Perform high pressure antigen retrieval with 10 mM citrate buffer pH 6. 0 before commencing with immunohistochemistry staining protocol.



Immunohistochemistry analysis of paraffin-embedded mouse spleen using KAP1/TRIM28 rabbit monoclonal antibody (STJ11101703) at dilution of 1:200 (40x lens). Perform high pressure antigen retrieval with 10 mM citrate buffer pH 6. 0 before commencing with immunohistochemistry staining protocol.



Immunoprecipitation analysis of 300 Mu g extracts of HeLa cells using 3 Mu g KAP1/TRIM28 antibody (STJ11101703). Western blot was performed from the immunoprecipitate using KAP1/TRIM28 antibody (STJ11101703) at a dilution of 1:1000.