

## Anti-PDGFRB antibody (1000-1106) [S0MR] (STJ11101680)

### GENERAL INFORMATION

Product Type	Primary antibodies
Applications	WB/IF/ICC/ELISA
Host / Source	Rabbit
Reactivity	Human/Mouse

### PRODUCT PROPERTIES

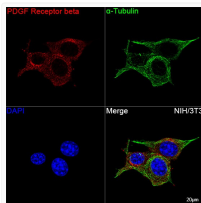
Clonality	Monoclonal
Concentration	Lot specific
Conjugation	Unconjugated
Purification	Affinity purification
Dilution Range	WB:1:1000-1:2000 IF/CC:1:50-1:200 ELISA:Recommended starting concentration is 1 Mu g/mL. Please optimize the concentration based on your specific assay requirements.
Formulation	PBS with 0.02% Sodium Azide, 0.05% BSA, 50% Glycerol, pH 7.3.
Isotype	IgG
Molecular Weight	Protein Mw: 124kDa Observed Mw: 170kDa/190kDa
Storage Instruction	Store at -20°C for up to 1 year from the date of receipt, and avoid repeat freeze-thaw cycles.

### TARGET INFORMATION

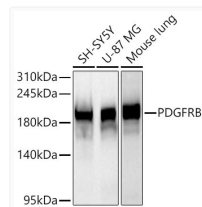
Gene ID	<a href="#">5159</a>
Gene Symbol	<a href="#">PDGFRB</a>
UniProt ID	<a href="#">PGFRB_HUMAN</a>
Immunogen Region	1000-1106
Immunogen Sequence	SPLDTSVLYTAVQPNEGDN DYIIPDPKPVEADEGPLE GSPSLASSTLNEVNTSSTIS CDSPLPQDEPEPEPQLELQ VEPEPELEQLPDSGCPAPRA EAEDSFL
Specificity	A synthetic peptide corresponding to a sequence within amino acids 1000-1106 of human PDGFRB (P09619).

### ADDITIONAL INFORMATION

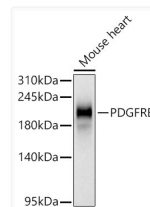
Note STRICTLY FOR FURTHER SCIENTIFIC RESEARCH USE ONLY (RUO). MUST NOT TO BE USED IN DIAGNOSTIC OR THERAPEUTIC APPLICATIONS.



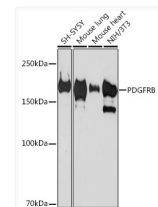
Confocal imaging of NIH/3T3 cells using PDGFRB Rabbit monoclonal antibody (STJ11101680, dilution 1:100) followed by a further incubation with Cy3 Goat Anti-Rabbit IgG (H+L) (dilution 1:500) (Red). The cells were counterstained with Alpha-Tubulin Mouse monoclonal antibody (STJS000856) at 1:10000 dilution. Lysates/proteins: 25 Mu g per lane. Blocking buffer: 3% nonfat dry milk in TBST. Detection: ECL Basic Kit. Exposure time: 20s.



Western blot analysis of various lysates using PDGFRB Rabbit monoclonal antibody (STJ11101680) at 1:1000 dilution incubated overnight at 4 °C. Secondary antibody: HRP-conjugated Goat anti-Rabbit IgG (H+L) (STJS000856) at 1:10000 dilution. Lysates/proteins: 25 Mu g per lane. Blocking buffer: 3% nonfat dry milk in TBST. Detection: ECL Basic Kit. Exposure time: 20s.



Western blot analysis of lysates from Mouse heart using PDGFRB Rabbit monoclonal antibody (STJ11101680) at 1:1000 dilution incubated overnight at 4 °C. Secondary antibody: HRP-conjugated Goat anti-Rabbit IgG (H+L) (STJS000856) at 1:10000 dilution. Lysates/proteins: 25 Mu g per lane. Blocking buffer: 3% nonfat dry milk in TBST. Detection: ECL Basic Kit. Exposure time: 30s.



Western blot analysis of various lysates using PDGFRB Rabbit monoclonal antibody (STJ11101680) at 1:1000 dilution. Secondary antibody: HRP Goat Anti-Rabbit IgG (H+L) (STJS000856) at 1:10000 dilution. Lysates/proteins: 25 Mu g per lane. Blocking buffer: 3% nonfat dry milk in TBST. Detection: ECL Basic Kit. Exposure time: 90s.