

**Anti-LMNA antibody (403-572) [S6MR] (STJ11101676)**
**GENERAL INFORMATION**

Product Type	Primary antibodies
Applications	WB/IHC-P/IF/ICC/IP/ELISA
Host / Source	Rabbit
Reactivity	Human/Mouse/Rat

**PRODUCT PROPERTIES**

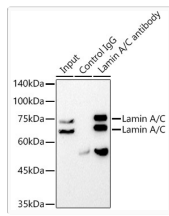
Clonality	Monoclonal
Concentration	Lot specific
Conjugation	Unconjugated
Purification	Affinity purification
Dilution Range	WB:1:50000-1:300000 IHC-P:1:1000-1:4000 IF/CC:1:100-1:800 IP:0.5 Mu g-4 Mu g antibody for 200 Mu g-400 Mu g extracts of whole cells ELISA:Recommended starting concentration is 1 Mu g/mL. Please optimize the concentration based on you
Formulation	PBS with 0.05% Proclin300, 0.05% BSA, 50% Glycerol, pH 7.3.
Isotype	IgG
Molecular Weight	Protein Mw: 74kDa Observed Mw: 68kDa/72kDa
Storage Instruction	Store at -20°C for up to 1 year from the date of receipt, and avoid repeat freeze-thaw cycles.

**TARGET INFORMATION**

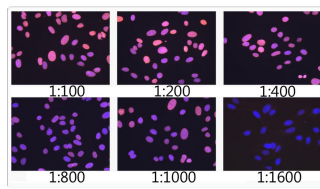
Gene ID	<a href="#">4000</a>
Gene Symbol	<a href="#">LMNA</a>
UniProt ID	<a href="#">LMNA_HUMAN</a>
Immunogen Region	403-572
Immunogen Sequence	SSHSSQTQGGGVTKKRKLK STESRSSFSQHARTSGRVAV EEVDEEGKFVRLRNKSNEDQ SMGNWQIKRQNGDDPLLTYR FPPKFTLKAGQVVTIWAAGA GATHSPPTDLVWKAQNTWGC GNSLRTALINSTGEEVAMRK LVRSVTVVEDEDEDGDDL HHHHGSHCSS
Specificity	Recombinant fusion protein containing a sequence corresponding to amino acids 403-572 of human Lamin A/C (NP_733821.1).

**ADDITIONAL INFORMATION**

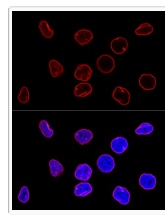
Note	STRICTLY FOR FURTHER SCIENTIFIC RESEARCH USE ONLY (RUO). MUST NOT TO BE USED IN DIAGNOSTIC OR THERAPEUTIC APPLICATIONS.
------	---



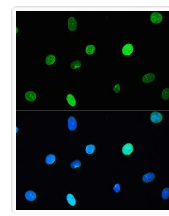
Immunoprecipitation analysis of 300  $\mu$ g extracts from PC-12 cells using 3  $\mu$ g [KO Validated] Lamin A/C Rabbit monoclonal antibody (STJ11101676). Western blot was performed from the immunoprecipitate using [KO Validated] Lamin A/C Rabbit monoclonal antibody (STJ11101676) at a dilution of 1:100000.



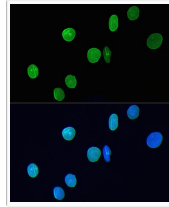
Immunofluorescence analysis of U-2 OS cells using [KO Validated] Lamin A/C Rabbit monoclonal antibody (STJ11101676) at dilution of 1:100- 1:1600. Blue: DAPI for nuclear staining.



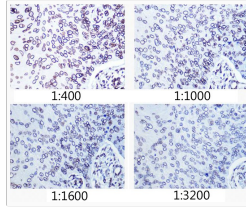
Confocal immunofluorescence analysis of HeLa cells using [KO Validated] Lamin A/C Rabbit monoclonal antibody (STJ11101676) at dilution of 1:100. Blue: DAPI for nuclear staining.



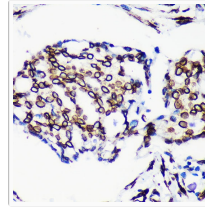
Immunofluorescence analysis of L929 cells using [KO Validated] Lamin A/C Rabbit monoclonal antibody (STJ11101676) at dilution of 1:200. Blue: DAPI for nuclear staining.



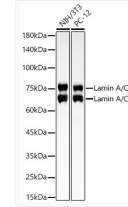
Immunofluorescence analysis of H9C2 cells using [KO Validated] Lamin A/C Rabbit monoclonal antibody (STJ11101676) at dilution of 1:200. Blue: DAPI for nuclear staining.



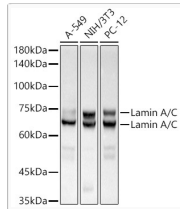
Immunohistochemistry analysis of Lamin A/C in paraffin-embedded human esophageal cancer using [KO Validated] Lamin A/C Rabbit monoclonal antibody (STJ11101676) at dilution of 1:400- 1:3200 (40x lens). Perform microwave antigen retrieval with 10 mM PBS buffer pH 7. 2 before commencing with immunohistochemistry staining protocol.



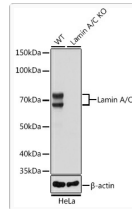
Immunohistochemistry analysis of Lamin A/C in paraffin-embedded Human breast cancer using [KO Validated] Lamin A/C Rabbit monoclonal antibody (STJ11101676) at dilution of 1:200 (40x lens). Perform microwave antigen retrieval with 10 mM PBS buffer pH 7. 2 before commencing with immunohistochemistry staining protocol.



Western blot analysis of various lysates, using [KO Validated] Lamin A/C Rabbit monoclonal antibody (STJ11101676) at 1:300000 dilution. Secondary antibody: HRP Goat Anti-Rabbit IgG (H+L) (STJS000856) at 1:10000 dilution. Lysates/proteins: 25  $\mu$ g per lane. Blocking buffer: 3% nonfat dry milk in TBST. Detection: ECL Basic Kit. Exposure time: 30s.



Western blot analysis of various lysates using [KO Validated] Lamin A/C Rabbit monoclonal antibody (STJ11101676) at 1:500000 dilution. Secondary antibody: HRP Goat Anti-Rabbit IgG (H+L) (STJS000856) at 1:10000 dilution. Lysates/proteins: 25  $\mu$ g per lane. Blocking buffer: 3% nonfat dry milk in TBST. Detection: ECL Basic Kit. Exposure time: 3s.



Western blot analysis of lysates from wild type (WT) and Lamin A/C knockout (KO) HeLa cells, using [KO Validated] Lamin A/C Rabbit monoclonal antibody (STJ11101676) at 1:50000 dilution. Secondary antibody: HRP Goat Anti-Rabbit IgG (H+L) (STJS000856) at 1:10000 dilution. Lysates/proteins: 25  $\mu$ g per lane. Blocking buffer: 3% nonfat dry milk in TBST. Detection: ECL Basic Kit. Exposure time: 1s.