

Anti-TRAF2 antibody (190-350) [S6MR] (STJ11101666)

GENERAL INFORMATION

Product Type	Primary antibodies
Applications	WB/IP/ELISA
Host / Source	Rabbit
Reactivity	Human/Mouse/Rat

PRODUCT PROPERTIES

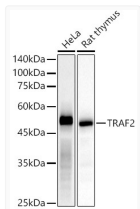
Clonality	Monoclonal
Concentration	Lot specific
Conjugation	Unconjugated
Purification	Affinity purification
Dilution Range	WB:1:25000-1:100000 IP:0.5 Mu g-4 Mu g antibody for 200 Mu g-400 Mu g extracts of whole cells ELISA:Recommended starting concentration is 1 Mu g/mL. Please optimize the concentration based on your specific assay requirements.
Formulation	PBS with 0.05% Proclin300, 0.05% BSA, 50% Glycerol, pH 7.3.
Isotype	IgG
Molecular Weight	Protein Mw: 53kDa/54kDa/55kDa/61kDa Observed Mw: 53kDa
Storage Instruction	Store at -20°C for up to 1 year from the date of receipt, and avoid repeat freeze-thaw cycles.

TARGET INFORMATION

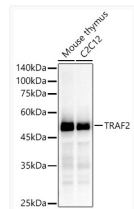
Gene ID	7186
Gene Symbol	TRAF2
UniProt ID	TRAF2_HUMAN
Immunogen Region	190-350
Immunogen Sequence	DGCGKKKIPREKFQDHVKTC GKCRVPCRFAIGCLETVEG EKQGEHEVQWLREHLAMLLS SVLEAKPLLGDQSHAGSELL QRCESELEKKTATFENIVCVL NREVERVAMTAEACSRQHRL DQDKIEALSSKVQQLERSIG LKDLAMADLEQKVLEMEAST Y
Specificity	Recombinant fusion protein containing a sequence corresponding to amino acids 190-350 of human TRAF2 (NP_066961.2).

ADDITIONAL INFORMATION

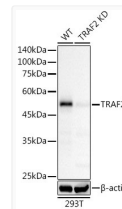
Note **STRICTLY FOR FURTHER SCIENTIFIC RESEARCH USE ONLY (RUO). MUST NOT TO BE USED IN DIAGNOSTIC OR THERAPEUTIC APPLICATIONS.**



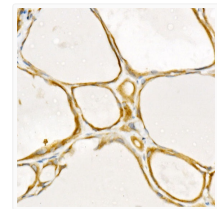
Western blot analysis of various lysates, using TRAF2 antibody (STJ11101666) at 1:50000 dilution. Secondary antibody: HRP Goat Anti-rabbit IgG (H+L) (STJS000856) at 1:10000 dilution. Lysates/proteins: 25 Mu g per lane. Blocking buffer: 3% non-fat dry milk in TBST. Detection: ECL Basic Kit. Exposure time: 10s.



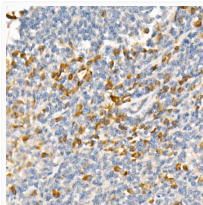
Western blot analysis of various lysates, using TRAF2 antibody (STJ11101666) at 1:50000 dilution. Secondary antibody: HRP Goat Anti-rabbit IgG (H+L) (STJS000856) at 1:10000 dilution. Lysates/proteins: 25 Mu g per lane. Blocking buffer: 3% non-fat dry milk in TBST. Detection: ECL Basic Kit. Exposure time: 60s.



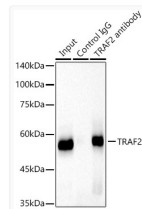
Western blot analysis of extracts from wild type (WT) and TRAF2 knockdown (KD) 293T cells, using TRAF2 antibody (STJ11101666) at 1:50000 dilution. Secondary antibody: HRP Goat Anti-rabbit IgG (H+L) (STJS000856) at 1:10000 dilution. Lysates/proteins: 25 Mu g per lane. Blocking buffer: 3% non-fat dry milk in TBST. Detection: ECL Basic Kit. Exposure time: 10s.



Immunohistochemistry analysis of paraffin-embedded human thyroid cancer using [KO Validated] TRAF2 rabbit monoclonal antibody (STJ11101666) at dilution of 1:500 (40x lens). Perform high pressure antigen retrieval with 10 mM citrate buffer pH 6.0 before commencing with immunohistochemistry staining protocol.



Immunohistochemistry analysis of paraffin-embedded human tonsil using [KO Validated] TRAF2 rabbit monoclonal antibody (STJ11101666) at dilution of 1:500 (40x lens). Perform high pressure antigen retrieval with 10 mM citrate buffer pH 6.0 before commencing with immunohistochemistry staining protocol.



Immunoprecipitation analysis of 300 Mu g extracts of HeLa cells using 3 Mu g TRAF2 antibody (STJ11101666). Western blot was performed from the immunoprecipitate using TRAF2 antibody (STJ11101666) at a dilution of 1:50000.