

## Anti-SMAD5 antibody (200-300) [S4MR] (STJ11101654)

### GENERAL INFORMATION

Product Type	Primary antibodies
Applications	WB/IP/ELISA
Host / Source	Rabbit
Reactivity	Human/Mouse

### PRODUCT PROPERTIES

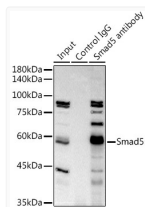
Clonality	Monoclonal
Concentration	Lot specific
Conjugation	Unconjugated
Purification	Affinity purification
Dilution Range	WB:1:500-1:1000 IP:0.5 Mu g-4 Mu g antibody for 200 Mu g-400 Mu g extracts of whole cells ELISA:Recommended starting concentration is 1 Mu g/mL. Please optimize the concentration based on your specific assay requirements.
Formulation	PBS with 0.02% Sodium Azide, 0.05% BSA, 50% Glycerol, pH 7.3.
Isotype	IgG
Molecular Weight	Protein Mw: 52kDa Observed Mw: 60kDa
Storage Instruction	Store at -20°C for up to 1 year from the date of receipt, and avoid repeat freeze-thaw cycles.

### TARGET INFORMATION

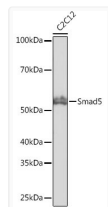
Gene ID	<a href="#">4090</a>
Gene Symbol	<a href="#">SMAD5</a>
UniProt ID	<a href="#">SMAD5_HUMAN</a>
Immunogen Region	200-300
Immunogen Sequence	STYPNSPASSGPGSPFQLPA DTPPPAYMPPDDQMGQDNSQ PMDTSNNMIPQIMPSISSRD VQPVAYEPEPKHWCSIVYYEL NNRVGEAFHASSTSVLVDGF T
Specificity	A synthetic peptide corresponding to a sequence within amino acids 200-300 of human Smad5 (Q99717).

### ADDITIONAL INFORMATION

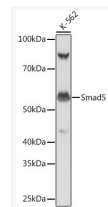
Note **STRICTLY FOR FURTHER SCIENTIFIC RESEARCH USE ONLY (RUO). MUST NOT TO BE USED IN DIAGNOSTIC OR THERAPEUTIC APPLICATIONS.**



Immunoprecipitation analysis of 300 Mu g extracts of K-562 cells using 3 Mu g Smad5 antibody (STJ11101654). Western blot was performed from the immunoprecipitate using Smad5 antibody (STJ11101654) at a dilution of 1:1000.



Western blot analysis of lysates from C2C12 cells, using Smad5 Rabbit monoclonal antibody (STJ11101654) at 1:1000 dilution. Secondary antibody: HRP Goat Anti-Rabbit IgG (H+L) (STJS000856) at 1:10000 dilution. Lysates/proteins: 25 Mu g per lane. Blocking buffer: 3% nonfat dry milk in TBST. Detection: ECL Basic Kit. Exposure time: 10s.



Western blot analysis of lysates from K-562 cells, using Smad5 Rabbit monoclonal antibody (STJ11101654) at 1:1000 dilution. Secondary antibody: HRP Goat Anti-Rabbit IgG (H+L) (STJS000856) at 1:10000 dilution. Lysates/proteins: 25 Mu g per lane. Blocking buffer: 3% nonfat dry milk in TBST. Detection: ECL Basic Kit. Exposure time: 1s.