

Anti-S100B antibody (1-92) [S5MR] (STJ11101645)

GENERAL INFORMATION

Product Type	Primary antibodies
Applications	WB/IHC-P/IF/ICC/ELISA
Host / Source	Rabbit
Reactivity	Human/Mouse/Rat

PRODUCT PROPERTIES

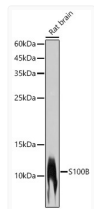
Clonality	Monoclonal
Concentration	Lot specific
Conjugation	Unconjugated
Purification	Affinity purification
Dilution Range	WB:1:1000-1:4000 IHC-P:1:200-1:2000 IF/CC:1:200-1:800 ELISA:Recommended starting concentration is 1 μ g/mL. Please optimize the concentration based on your specific assay requirements.
Formulation	PBS with 0.05% Proclin300, 0.05% BSA, 50% Glycerol, pH 7.3.
Isotype	IgG
Molecular Weight	Protein Mw: 11kDa Observed Mw: 11kDa
Storage Instruction	Store at -20°C for up to 1 year from the date of receipt, and avoid repeat freeze-thaw cycles.

TARGET INFORMATION

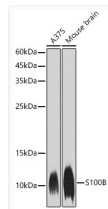
Gene ID	6285
Gene Symbol	S100B
UniProt ID	S100B_HUMAN
Immunogen Region	1-92
Immunogen Sequence	MSELEKAMVALIDVFHQYSG REGDKHKLKSELKELINNE LSHFLEEIKEQEVVDKVMET LDNDGDGCEDFQEFMAFVAM VTTACHEFFEHE
Specificity	Recombinant fusion protein containing a sequence corresponding to amino acids 1-92 of human S100B (NP_006263.1).

ADDITIONAL INFORMATION

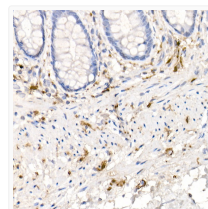
Note **STRICTLY FOR FURTHER SCIENTIFIC RESEARCH USE ONLY (RUO). MUST NOT TO BE USED IN DIAGNOSTIC OR THERAPEUTIC APPLICATIONS.**



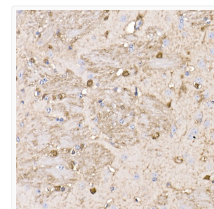
Western blot analysis of Rat brain, using S100B rabbit monoclonal antibody (STJ11101645) at 1:1000 dilution. Secondary antibody: HRP Goat Anti-rabbit IgG (H+L) (STJS000856) at 1:10000 dilution. Lysates/proteins: 25 μ g per lane. Blocking buffer: 3% non-fat dry milk in TBST. Detection: ECL Basic Kit. Exposure time: 1s.



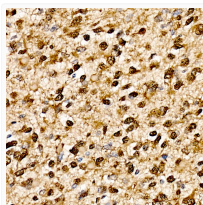
Western blot analysis of various lysates, using S100B rabbit monoclonal antibody (STJ11101645) at 1:1000 dilution. Secondary antibody: HRP Goat Anti-rabbit IgG (H+L) (STJS000856) at 1:10000 dilution. Lysates/proteins: 25 μ g per lane. Blocking buffer: 3% non-fat dry milk in TBST. Detection: ECL Basic Kit. Exposure time: 1s.



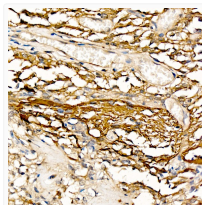
Immunohistochemistry analysis of paraffin-embedded Human colonic peripheral nerve using S100B rabbit monoclonal antibody (STJ11101645) at dilution of 1:100 (40x lens). Perform high pressure antigen retrieval with 10 mM citrate buffer pH 6.0 before commencing with immunohistochemistry staining protocol.



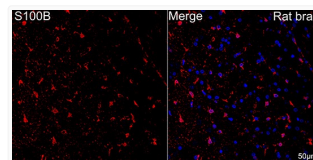
Immunohistochemistry analysis of paraffin-embedded mouse brain using S100B rabbit monoclonal antibody (STJ11101645) at dilution of 1:100 (40x lens). Perform high pressure antigen retrieval with 10 mM citrate buffer pH 6.0 before commencing with immunohistochemistry staining protocol.



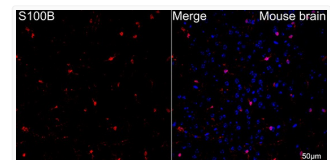
Immunohistochemistry analysis of S100B in paraffin-embedded human malignant glioma tissue using S100B rabbit monoclonal antibody (STJ11101645) at a dilution of 1:100 (40x lens). High pressure antigen retrieval was performed with 0.01 M citrate buffer (pH 6.0) prior to immunohistochemistry staining.



Immunohistochemistry analysis of S100B in paraffin-embedded Human oligodendrogloma tissue using S100B rabbit monoclonal antibody (STJ11101645) at a dilution of 1:100 (40x lens). High pressure antigen retrieval was performed with 0.01 M citrate buffer (pH 6.0) prior to immunohistochemistry staining.



Confocal imaging of paraffin-embedded rat brain using S100B rabbit monoclonal antibody (STJ11101645, dilution 1:200) followed by a further incubation with Cy3 Goat Anti-rabbit IgG (H+L) (dilution 1:500) (Red). DAPI was used for nuclear staining (Blue). Objective: 40x. Perform microwave antigen retrieval with 0.01M citrate buffer (pH 6.0) prior to IF staining.



Confocal imaging of paraffin-embedded mouse brain using S100B rabbit monoclonal antibody (STJ11101645, dilution 1:200) followed by a further incubation with Cy3 Goat Anti-rabbit IgG (H+L) (dilution 1:500) (Red). DAPI was used for nuclear staining (Blue). Objective: 40x. Perform microwave antigen retrieval with 0.01M citrate buffer (pH 6.0) prior to IF staining.