

Anti-CDKN1A antibody (1-164) [S1MR] (STJ11101631)

GENERAL INFORMATION

Product Type	Primary antibodies
Applications	WB/IHC-P/ELISA
Host / Source	Rabbit
Reactivity	Human/Mouse/Rat

PRODUCT PROPERTIES

Clonality	Monoclonal
Concentration	Lot specific
Conjugation	Unconjugated
Purification	Affinity purification
Dilution Range	WB:1:1000-1:2000 IHC-P:1:200-1:800 ELISA:Recommended starting concentration is 1 Mu g/mL. Please optimize the concentration based on your specific assay requirements.
Formulation	PBS with 0.09% Sodium Azide, 0.05% BSA, 50% Glycerol, pH7.3.
Isotype	IgG
Molecular Weight	Protein Mw: 18kDa Observed Mw: 18kDa (Mouse) /21kDa (Human/Rat)
Storage Instruction	Store at-20°C for up to 1 year from the date of receipt, and avoid repeat freeze-thaw cycles.

TARGET INFORMATION

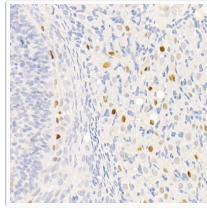
Gene ID	1026
Gene Symbol	CDKN1A
UniProt ID	CDN1A_HUMAN
Immunogen Region	1-164
Immunogen Sequence	MSEPAGDVRQNPCGSKACRR LFGPVDSEQLSRDCDALMAG CIQEARERWNFDFVTETPLE GDFAWERVRLGLPKLYLPT GPRRGRDELGGRRPGTSPA LLQGTAEEDHVDLSLSCTLV PRSGEQAEGSPGGPGDSQGR KRRQTSMTDFYHSKRRLIFS KRKP
Specificity	Recombinant fusion protein containing a sequence corresponding to amino acids 1-164 of human CDKN1A/p21CIP1 (NP_000380.1).

ADDITIONAL INFORMATION

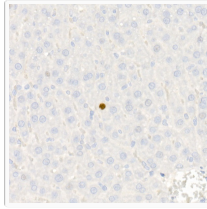
Note	STRICTLY FOR FURTHER SCIENTIFIC RESEARCH USE ONLY (RUO). MUST NOT TO BE USED IN DIAGNOSTIC OR THERAPEUTIC APPLICATIONS.
------	---



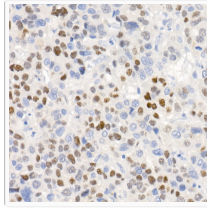
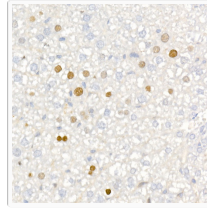
Immunohistochemistry analysis of paraffin-embedded rat ovary using [KO Validated] CDKN1A/p21CIP1 Rabbit monoclonal antibody (STJ11101631) at dilution of 1:100 (40x lens). Perform high pressure antigen retrieval with 10 mM citrate buffer pH 6.0 before commencing with immunohistochemistry staining protocol.



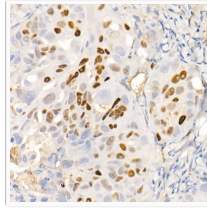
Immunohistochemistry analysis of paraffin-embedded rat liver using [KO Validated] CDKN1A/p21CIP1 Rabbit monoclonal antibody (STJ11101631) at dilution of 1:100 (40x lens). Perform high pressure antigen retrieval with 10 mM citrate buffer pH 6.0 before commencing with immunohistochemistry staining protocol.



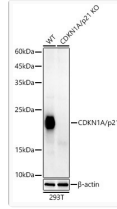
Immunohistochemistry analysis of paraffin-embedded mouse liver using [KO Validated] CDKN1A/p21CIP1 Rabbit monoclonal antibody (STJ11101631) at dilution of 1:100 (40x lens). Perform high pressure antigen retrieval with 10 mM citrate buffer pH 6.0 before commencing with immunohistochemistry staining protocol.



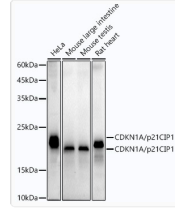
Immunohistochemistry analysis of paraffin-embedded human liver cancer using [KO Validated] CDKN1A/p21CIP1 Rabbit monoclonal antibody (STJ11101631) at dilution of 1:100 (40x lens). Perform high pressure antigen retrieval with 10 mM citrate buffer pH 6.0 before commencing with immunohistochemistry staining protocol.



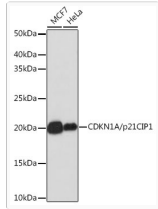
Immunohistochemistry analysis of paraffin-embedded human colon carcinoma using [KO Validated] CDKN1A/p21CIP1 Rabbit monoclonal antibody (STJ11101631) at dilution of 1:100 (40x lens). Perform high pressure antigen retrieval with 10 mM citrate buffer pH 6.0 before commencing with immunohistochemistry staining protocol.



Western blot analysis of extracts from wild type (WT) and CDKN1A/p21 knockout (KO) 293T cells, using [KO Validated] CDKN1A/p21 Rabbit monoclonal antibody (STJ11101631) at 1:1000 dilution. Secondary antibody; HRP Goat Anti-Rabbit IgG (H+L) (STJS000856) at 1:10000 dilution. Lysates/proteins: 25ug per lane. Blocking buffer: 3% nonfat dry milk in TBST. Detection: ECL Enhanced Kit. Exposure time: 60s.



Western blot analysis of extracts of various cell lines, using CDKN1A/p21CIP1 antibody (STJ11101631) at 1:1000 dilution. Secondary antibody; HRP Goat Anti-Rabbit IgG (H+L) (STJS000856) at 1:10000 dilution. Lysates/proteins: 25 Mu g per lane. Blocking buffer: 3% nonfat dry milk in TBST. Detection: ECL Enhanced Kit. Exposure time: 90s.



Western blot analysis of extracts of various cell lines, using CDKN1A/p21CIP1 antibody (STJ11101631) at 1:1000 dilution. Secondary antibody; HRP Goat Anti-Rabbit IgG (H+L) (STJS000856) at 1:10000 dilution. Lysates/proteins: 25 Mu g per lane. Blocking buffer: 3% nonfat dry milk in TBST. Detection: ECL Enhanced Kit. Exposure time: 3min.