

## Anti-ABCB1 antibody (393-710) [S0MR] (STJ11101630)

### GENERAL INFORMATION

Product Type	Primary antibodies
Applications	WB/ELISA
Host / Source	Rabbit
Reactivity	Human/Mouse/Rat

### PRODUCT PROPERTIES

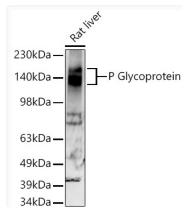
Clonality	Monoclonal
Concentration	Lot specific
Conjugation	Unconjugated
Purification	Affinity purification
Dilution Range	WB:1:500-1:1000 ELISA:Recommended starting concentration is 1 µg/mL. Please optimize the concentration based on your specific assay requirements.
Formulation	PBS with 0.02% Sodium Azide, 0.05% BSA, 50% Glycerol, pH 7.3.
Isotype	IgG
Molecular Weight	Protein Mw: 141kDa Observed Mw: 130-180kDa
Storage Instruction	Store at -20°C for up to 1 year from the date of receipt, and avoid repeat freeze-thaw cycles.

### TARGET INFORMATION

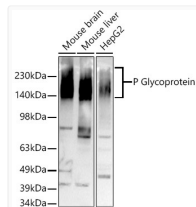
Gene ID	<a href="#">5243</a>
Gene Symbol	<a href="#">ABCB1</a>
UniProt ID	<a href="#">MDR1_HUMAN</a>
Immunogen Region	393-710
Immunogen Sequence	EFNRVHFSYPSRKEVKILKG LNLKVQSGQTVALVGNSSGCG KSTTVQLMQRLYDPTGEMVS VDGQDIRTINVRFLREIIGV VSOEPVLFATTIAENIRYGR ENVTMDEIEKAVKEANAYDF IMKLPKFDLTVGERGAQLS GGQKQRIARALVRNPKIL LLDEATSALDTESEAVVQVA LDKARKGRTTIVIAHRLSTV RNADVIAGFDDGVIVEKGNH DELMKEKGIYFKLVTMQTA
Specificity	Recombinant fusion protein containing a sequence corresponding to amino acids 393-710 of human P Glycoprotein (P08183).

### ADDITIONAL INFORMATION

Note **STRICTLY FOR FURTHER SCIENTIFIC RESEARCH USE ONLY (RUO). MUST NOT TO BE USED IN DIAGNOSTIC OR THERAPEUTIC APPLICATIONS.**



Western blot analysis of extracts of Rat liver, using P Glycoprotein antibody (STJ11101630) at 1:500 dilution. Secondary antibody: HRP Goat Anti-Rabbit IgG (H+L) (STJS000856) at 1:10000 dilution. Lysates/proteins: 25 µg per lane. Blocking buffer: 3% nonfat dry milk in TBST. Detection: ECL Enhanced Kit. Exposure time: 90s.



Western blot analysis of extracts of various cell lines, using P Glycoprotein antibody (STJ11101630) at 1:500 dilution. Secondary antibody: HRP Goat Anti-Rabbit IgG (H+L) (STJS000856) at 1:10000 dilution. Lysates/proteins: 25 µg per lane. Blocking buffer: 3% nonfat dry milk in TBST. Detection: ECL Basic Kit. Exposure time: 180s.