

## Anti-METTL3 antibody (2-250) [S6MR] (STJ11101616)

### GENERAL INFORMATION

Product Type	Primary antibodies
Applications	WB/IF/ICC/IP/ELISA
Host / Source	Rabbit
Reactivity	Human/Mouse/Rat

### PRODUCT PROPERTIES

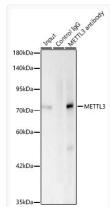
Clonality	Monoclonal
Concentration	Lot specific
Conjugation	Unconjugated
Purification	Affinity purification
Dilution Range	WB:1:1000-1:2000 IF/CC:1:100-1:400 IP:0.5 Mu g-4 Mu g antibody for 200 Mu g-400 Mu g extracts of whole cells ELISA:Recommended starting concentration is 1 Mu g/mL. Please optimize the concentration based on your specific assay requiremen
Formulation	PBS with 0.02% Sodium Azide, 0.05% BSA, 50% Glycerol, pH 7.3.
Isotype	IgG
Molecular Weight	Protein Mw: 64kDa Observed Mw: 75kDa
Storage Instruction	Store at -20°C for up to 1 year from the date of receipt, and avoid repeat freeze-thaw cycles.

### TARGET INFORMATION

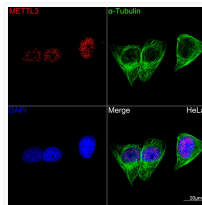
Gene ID	<a href="#">56339</a>
Gene Symbol	<a href="#">METTL3</a>
UniProt ID	<a href="#">MTA70_HUMAN</a>
Immunogen Region	2-250
Immunogen Sequence	SDTWSSIQAHKKQLDSLRLER LQRRRKQDSGHLDLRNP EAA LSPTFRSDSPVPTAPTSGGP KPSTASAVPELATDPELEKK LLHHLSDLALTLPTDAVSIC LAISTPDAPATQDGVESLLQ KFAAQELIEVKRGLLQDDAH PTLVTYADHSKLSAMMGAVA EKKGPGEVAGTGTGQKRRAE QDSTTVAAFASSLVSGLNSS ASEPAKEPAKKSRRKHAASDV DLEIESLLNQSQSTKEQQSK
Specificity	Recombinant fusion protein containing a sequence corresponding to amino acids 2-250 of human METTL3 (Q86U44).

### ADDITIONAL INFORMATION

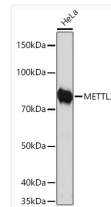
Note STRICTLY FOR FURTHER SCIENTIFIC RESEARCH USE ONLY (RUO). MUST NOT TO BE USED IN DIAGNOSTIC OR THERAPEUTIC APPLICATIONS.



Immunoprecipitation of METTL3 from 200 µg extracts of 293F cells was performed using 0.5 µg of METTL3 Rabbit monoclonal antibody (STJ11101616). Rabbit IgG isotype control was used to precipitate the Control IgG sample. IP samples were eluted with 1X Laemmli Buffer. The Input lane represents 10% of the total input. Western blot analysis of immunoprecipitates was conducted using METTL3 Rabbit monoclonal antibody (STJ11101616) at a dilution of 1:500.



Confocal imaging of HeLa cells using METTL3 Rabbit monoclonal antibody (STJ11101616, dilution 1:100) (Red). The cells were counterstained with Alpha-Tubulin Mouse monoclonal antibody (dilution 1:400) (Green). DAPI was used for nuclear staining (blue). Objective: 100x.



Western blot analysis of lysates from HeLa cells, using METTL3 Rabbit monoclonal antibody (STJ11101616) at 1:1000 dilution. Secondary antibody: HRP Goat Anti-Rabbit IgG (H+L) (STJS000856) at 1:10000 dilution. Lysates/proteins: 25 Mu g per lane. Blocking buffer: 3% nonfat dry milk in TBST. Detection: ECL Enhanced Kit. Exposure time: 3min.