

Anti-LEPR antibody (1000-1100) [S3MR] (STJ11101613)

GENERAL INFORMATION

Product Type	Primary antibodies
Applications	WB/IHC-P/ELISA
Host / Source	Rabbit
Reactivity	Human/Mouse/Rat

PRODUCT PROPERTIES

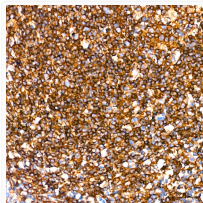
Clonality	Monoclonal
Concentration	Lot specific
Conjugation	Unconjugated
Purification	Affinity purification
Dilution Range	WB:1:1000-1:2000 IHC-P:1:200-1:2000 ELISA:Recommended starting concentration is 1 µg/mL. Please optimize the concentration based on your specific assay requirements.
Formulation	PBS with 0.02% Sodium Azide, 0.05% BSA, 50% Glycerol, pH 7.3.
Isotype	IgG
Molecular Weight	Protein Mw: 132kDa Observed Mw: 140kDa
Storage Instruction	Store at -20°C for up to 1 year from the date of receipt, and avoid repeat freeze-thaw cycles.

TARGET INFORMATION

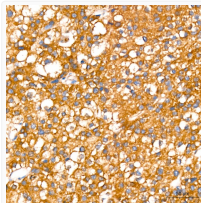
Gene ID	3953
Gene Symbol	LEPR
UniProt ID	LEPR_HUMAN
Immunogen Region	1000-1100
Immunogen Sequence	EEQGLINSSVTKCFSSKNSP LKDSFSNSSWEIEAQAFFIL SDQHPNIISPHLTFSEGLDE LLKLEGNFPEENNDKKSIIY LGVTSIKKRESGVLLTDKSR V
Specificity	A synthetic peptide corresponding to a sequence within amino acids 1000-1100 of human Leptin Receptor (P48357).

ADDITIONAL INFORMATION

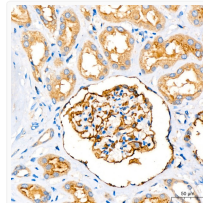
Note STRICTLY FOR FURTHER SCIENTIFIC RESEARCH USE ONLY (RUO). MUST NOT TO BE USED IN DIAGNOSTIC OR THERAPEUTIC APPLICATIONS.



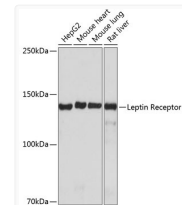
Immunohistochemistry analysis of Leptin Receptor in paraffin-embedded human tonsil using Leptin Receptor Rabbit monoclonal antibody (STJ11101613) at dilution of 1:200 (40x lens). Perform high pressure antigen retrieval with 10 mM citrate buffer pH 6.0 before commencing with immunohistochemistry staining protocol.



Immunohistochemistry analysis of Leptin Receptor in paraffin-embedded human liver cancer using Leptin Receptor Rabbit monoclonal antibody (STJ11101613) at dilution of 1:200 (40x lens). Perform high pressure antigen retrieval with 10 mM citrate buffer pH 6.0 before commencing with immunohistochemistry staining protocol.



Immunohistochemistry analysis of Leptin Receptor in paraffin-embedded human kidney using Leptin Receptor Rabbit monoclonal antibody (STJ11101613) at dilution of 1:200 (40x lens). Perform high pressure antigen retrieval with 10 mM citrate buffer pH 6.0 before commencing with immunohistochemistry staining protocol.



Western blot analysis of various lysates using Leptin Receptor Rabbit monoclonal antibody (STJ11101613) at 1:1000 dilution. Secondary antibody: HRP Goat Anti-Rabbit IgG (H+L) (STJS000856) at 1:10000 dilution. Lysates/proteins: 25 µg per lane. Blocking buffer: 3% nonfat dry milk in TBST. Detection: ECL Basic Kit. Exposure time: 1min.