

Anti-ITGA6 antibody (481-591) [S7MR] (STJ11101607)

GENERAL INFORMATION

Product Type	Primary antibodies
Applications	WB/ELISA
Host / Source	Rabbit
Reactivity	Human/Mouse/Rat

PRODUCT PROPERTIES

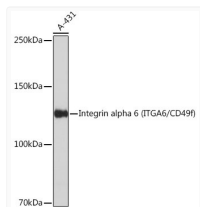
Clonality	Monoclonal
Concentration	Lot specific
Conjugation	Unconjugated
Purification	Affinity purification
Dilution Range	WB:1:500-1:2000 ELISA:Recommended starting concentration is 1 Mu g/mL. Please optimize the concentration based on your specific assay requirements.
Formulation	PBS with 0.05% Proclin300, 0.05% BSA, 50% Glycerol, pH 7.3.
Isotype	IgG
Molecular Weight	Protein Mw: 106kDa/119kDa/121kDa/122kDa/124kDa/126kDa Observed Mw: 125kDa
Storage Instruction	Store at -20°C for up to 1 year from the date of receipt, and avoid repeat freeze-thaw cycles.

TARGET INFORMATION

Gene ID	3655
Gene Symbol	ITGA6
UniProt ID	ITA6_HUMAN
Immunogen Region	481-591
Immunogen Sequence	IDLRQKTACGAPSGICLQVK SCFEYTANPAGYNPSISIVG TLEAEKERRKSGLSSRVQFR NQGSEPKYTQELTLKRQKQK VCMEETLWLQDNIRDKLRPI PITASVEIQEP
Specificity	Recombinant fusion protein containing a sequence corresponding to amino acids 481-591 of human Integrin alpha 6 (ITGA6/CD49f) (NP_001073286.1).

ADDITIONAL INFORMATION

Note STRICTLY FOR FURTHER SCIENTIFIC RESEARCH USE ONLY (RUO). MUST NOT TO BE USED IN DIAGNOSTIC OR THERAPEUTIC APPLICATIONS.



Western blot analysis of extracts of A-431 cells, using Integrin alpha 6 (ITGA6/CD49f) antibody (STJ11101607) at 1:1000 dilution. Secondary antibody: HRP Goat Anti-Rabbit IgG (H+L) (STJS000856) at 1:10000 dilution. Lysates/proteins: 25 Mu g per lane. Blocking buffer: 3% nonfat dry milk in TBST. Detection: ECL Basic Kit. Exposure time: 1s.