

## Anti-ITGA2 antibody (1082-1181) [S5MR] (STJ11101605)

### GENERAL INFORMATION

Product Type	Primary antibodies
Applications	WB/IHC-P/ELISA
Host / Source	Rabbit
Reactivity	Human/Mouse/Rat

### PRODUCT PROPERTIES

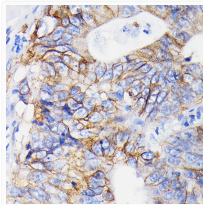
Clonality	Monoclonal
Concentration	Lot specific
Conjugation	Unconjugated
Purification	Affinity purification
Dilution Range	WB:1:1000-1:6000 IHC-P:1:200-1:800 ELISA:Recommended starting concentration is 1 Mu g/mL. Please optimize the concentration based on your specific assay requirements.
Formulation	PBS with 0.02% Sodium Azide, 0.05% BSA, 50% Glycerol, pH 7.3.
Isotype	IgG
Molecular Weight	Protein Mw: 129kDa Observed Mw: 150kDa
Storage Instruction	Store at -20°C for up to 1 year from the date of receipt, and avoid repeat freeze-thaw cycles.

### TARGET INFORMATION

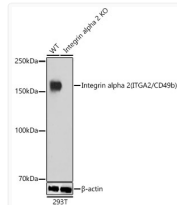
Gene ID	<a href="#">3673</a>
Gene Symbol	<a href="#">ITGA2</a>
UniProt ID	<a href="#">ITA2_HUMAN</a>
Immunogen Region	1082-1181
Immunogen Sequence	GTFASSTFQTVQLTAAAEIN TYNPEIYVIEDNTVTIPLMI MKPDEKAEVPTGVIIGSIIA GILLLLALVAILWKLGFVKR KYEKMTKNPDEIDETTELSS
Specificity	A synthetic peptide corresponding to a sequence within amino acids 1082-1181 of human Integrin alpha 2 (ITGA2/CD49b) (P17301).

### ADDITIONAL INFORMATION

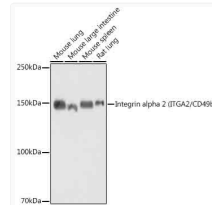
Note STRICTLY FOR FURTHER SCIENTIFIC RESEARCH USE ONLY (RUO). MUST NOT TO BE USED IN DIAGNOSTIC OR THERAPEUTIC APPLICATIONS.



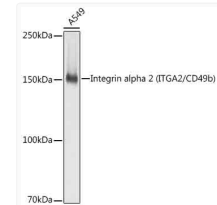
Immunohistochemistry analysis of Integrin alpha 2 (ITGA2/CD49b) in paraffin-embedded human colon carcinoma using Integrin alpha 2 (ITGA2/CD49b) Rabbit monoclonal antibody (STJ11101605) at dilution of 1:100 (40x lens). Perform microwave antigen retrieval with 10 mM PBS buffer pH 7.2 before commencing with immunohistochemistry staining protocol.



Western blot analysis of lysates from wild type (WT) and Integrin alpha 2 (ITGA2/CD49b) knockout (KO) 293T cells, using [KO Validated] Integrin alpha 2 (ITGA2/CD49b) Rabbit monoclonal antibody (STJ11101605) at 1:1000 dilution. Secondary antibody: HRP Goat Anti-Rabbit IgG (H+L) (STJS000856) at 1:10000 dilution. Lysates/proteins: 25 Mu g per lane. Blocking buffer: 3% nonfat dry milk in TBST. Detection: ECL Basic Kit. Exposure time: 1s.



Western blot analysis of various lysates, using [KO Validated] Integrin alpha 2 (ITGA2/CD49b) Rabbit monoclonal antibody (STJ11101605) at 1:1000 dilution. Secondary antibody: HRP Goat Anti-Rabbit IgG (H+L) (STJS000856) at 1:10000 dilution. Lysates/proteins: 25 Mu g per lane. Blocking buffer: 3% nonfat dry milk in TBST. Detection: ECL Basic Kit. Exposure time: 10s.



Western blot analysis of lysates from A549 cells, using [KO Validated] Integrin alpha 2 (ITGA2/CD49b) Rabbit monoclonal antibody (STJ11101605) at 1:1000 dilution. Secondary antibody: HRP Goat Anti-Rabbit IgG (H+L) (STJS000856) at 1:10000 dilution. Lysates/proteins: 25 Mu g per lane. Blocking buffer: 3% nonfat dry milk in TBST. Detection: ECL Basic Kit. Exposure time: 1s.