

Anti-HMOX1 antibody (1-265) [S0MR] (STJ11101600)

GENERAL INFORMATION

| | |
|---------------|-----------------------|
| Product Type | Primary antibodies |
| Applications | WB/IHC-P/IF/ICC/ELISA |
| Host / Source | Rabbit |
| Reactivity | Human/Mouse/Rat |

PRODUCT PROPERTIES

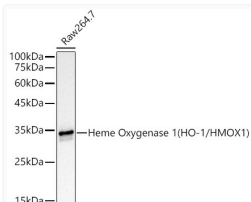
| | |
|---------------------|---|
| Clonality | Monoclonal |
| Concentration | Lot specific |
| Conjugation | Unconjugated |
| Purification | Affinity purification |
| Dilution Range | WB:1:2000-1:10000 IHC-P:1:200-1:800 IF/CC:1:50-1:200 ELISA:Recommended starting concentration is 1 Mu g/mL. Please optimize the concentration based on your specific assay requirements. |
| Formulation | PBS with 0.05% Proclin300, 0.05% BSA, 50% Glycerol, pH 7.3. |
| Isotype | IgG |
| Molecular Weight | Protein Mw: 33kDa Observed Mw: 33kDa |
| Storage Instruction | Store at -20°C for up to 1 year from the date of receipt, and avoid repeat freeze-thaw cycles. |

TARGET INFORMATION

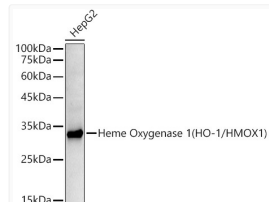
| | |
|--------------------|---|
| Gene ID | 3162 |
| Gene Symbol | HMOX1 |
| UniProt ID | HMOX1_HUMAN |
| Immunogen Region | 1-265 |
| Immunogen Sequence | MERPQDSMPQDLSEALKEA TKEVHTQAENAEFMRNFQKG QVTRDGFKLVMASLYHIYVA LEEEIERNKESPVFAPVYFP EELHRKAALQDLAFWYGPR WQEVIPYTPAMQRYVKRLHE VGRTEPELLVAHAYTRYLGD LSGGQVLKIAQKALDLPSS GEGLAFFTFPNIASATKFKQ LYRSRMNSLEMPAVRQRVI EEAKTAFLLNIQLFEELQEL LTHDTKDQSPSRAPGLRQR |
| Specificity | Recombinant fusion protein containing a sequence corresponding to amino acids 1-265 of human Heme Oxygenase 1 (HO-1/HMOX1) (NP_002124.1). |

ADDITIONAL INFORMATION

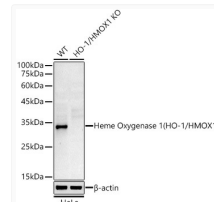
Note STRICTLY FOR FURTHER SCIENTIFIC RESEARCH USE ONLY (RUO). MUST NOT TO BE USED IN DIAGNOSTIC OR THERAPEUTIC APPLICATIONS.



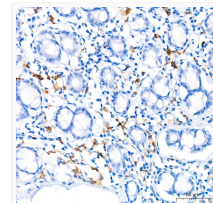
Western blot analysis of extracts of Raw264. 7 cells, using Heme Oxygenase 1 (HO-1/HMOX1) antibody (STJ11101600) at 1:10000 dilution. Secondary antibody: HRP Goat Anti-rabbit IgG (H+L) (STJS000856) at 1:10000 dilution. Lysates/proteins: 25 Mu g per lane. Blocking buffer: 3% non-fat dry milk in TBST. Detection: ECL Basic Kit. Exposure time: 3s.



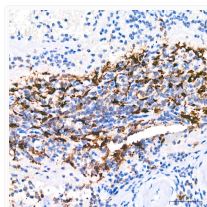
Western blot analysis of extracts of HepG2 cells, using Heme Oxygenase 1 (HO-1/HMOX1) antibody (STJ11101600) at 1:10000 dilution. Secondary antibody: HRP Goat Anti-rabbit IgG (H+L) (STJS000856) at 1:10000 dilution. Lysates/proteins: 25 Mu g per lane. Blocking buffer: 3% non-fat dry milk in TBST. Detection: ECL Basic Kit. Exposure time: 180s.



Western blot analysis of extracts from wild type (WT) and Heme Oxygenase 1 (HO-1/HMOX1) knockout (KO) HeLa cells, using Heme Oxygenase 1 (HO-1/HMOX1) antibody (STJ11101600) at 1:10000 dilution. Secondary antibody: HRP Goat Anti-rabbit IgG (H+L) (STJS000856) at 1:10000 dilution. Lysates/proteins: 25 Mu g per lane. Blocking buffer: 3% non-fat dry milk in TBST. Detection: ECL Basic Kit. Exposure time: 180s.



Immunohistochemistry analysis of paraffin-embedded human colon using [KO Validated] Heme Oxygenase 1 (HO-1/HMOX1) rabbit monoclonal antibody (STJ11101600) at dilution of 1:200 (40x lens). Perform high pressure antigen retrieval with 10 mM citrate buffer pH 6. 0 before commencing with immunohistochemistry staining protocol.



Immunohistochemistry analysis of paraffin-embedded human spleen using [KO Validated] Heme Oxygenase 1 (HO-1/HMOX1) rabbit monoclonal antibody (STJ11101600) at dilution of 1:200 (40x lens). Perform high pressure antigen retrieval with 10 mM citrate buffer pH 6. 0 before commencing with immunohistochemistry staining protocol.