

Anti-GSK3A antibody (1-100) [S8MR] (STJ11101598)

GENERAL INFORMATION

Product Type	Primary antibodies
Applications	WB/IP/ELISA
Host / Source	Rabbit
Reactivity	Human/Mouse/Rat

PRODUCT PROPERTIES

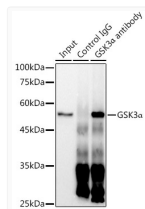
Clonality	Monoclonal
Concentration	Lot specific
Conjugation	Unconjugated
Purification	Affinity purification
Dilution Range	WB:1:1000-1:6000 IP:0.5 Mu g-4 Mu g extracts of whole cells ELISA:Recommended starting concentration is 1 Mu g/mL. Please optimize the concentration based on your specific assay requirements.
Formulation	PBS with 0.02% Sodium Azide, 0.05% BSA, 50% Glycerol, pH 7.3.
Isotype	IgG
Molecular Weight	Protein Mw: 51kDa Observed Mw: 51kDa
Storage Instruction	Store at -20°C for up to 1 year from the date of receipt, and avoid repeat freeze-thaw cycles.

TARGET INFORMATION

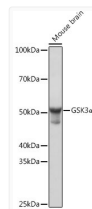
Gene ID	2931
Gene Symbol	GSK3A
UniProt ID	GSK3A_HUMAN
Immunogen Region	1-100
Immunogen Sequence	MSGGGPSSGGGPGGSGRARTS SFAEPGGGGGGGGGGPGGSA SGPGGTGGKASVGMGGGV GASSGGGPGGSSGGGGSGGP GAGTSFPPPGVKLGRDSSGKV
Specificity	A synthetic peptide corresponding to a sequence within amino acids 1-100 of human GSK3 Alpha (P49840).

ADDITIONAL INFORMATION

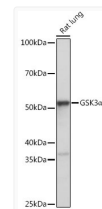
Note STRICTLY FOR FURTHER SCIENTIFIC RESEARCH USE ONLY (RUO). MUST NOT TO BE USED IN DIAGNOSTIC OR THERAPEUTIC APPLICATIONS.



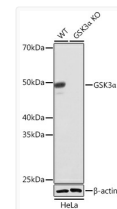
Immunoprecipitation analysis of 300 Mu g extracts of HeLa cells using 3 Mu g GSK3 Alpha antibody (STJ11101598). Western blot was performed from the immunoprecipitate using GSK3 Alpha antibody (STJ11101598) at a dilution of 1:1000.



Western blot analysis of lysates from Mouse brain, using [KO Validated] GSK3 Alpha Rabbit monoclonal antibody (STJ11101598) at 1:1000 dilution. Secondary antibody: HRP Goat Anti-Rabbit IgG (H+L) (STJS000856) at 1:10000 dilution. Lysates/proteins: 25 Mu g per lane. Blocking buffer: 3% nonfat dry milk in TBST. Detection: ECL Basic Kit. Exposure time: 1s.



Western blot analysis of lysates from Rat lung, using [KO Validated] GSK3 Alpha Rabbit monoclonal antibody (STJ11101598) at 1:1000 dilution. Secondary antibody: HRP Goat Anti-Rabbit IgG (H+L) (STJS000856) at 1:10000 dilution. Lysates/proteins: 25 Mu g per lane. Blocking buffer: 3% nonfat dry milk in TBST. Detection: ECL Basic Kit. Exposure time: 10s.



Western blot analysis of lysates from wild type (WT) and GSK3 Alpha knockout (KO) HeLa cells, using [KO Validated] GSK3 Alpha Rabbit monoclonal antibody (STJ11101598) at 1:1000 dilution. Secondary antibody: HRP Goat Anti-Rabbit IgG (H+L) (STJS000856) at 1:10000 dilution. Lysates/proteins: 25 Mu g per lane. Blocking buffer: 3% nonfat dry milk in TBST. Detection: ECL Basic Kit. Exposure time: 10s.