

Anti-GRB2 antibody (118-217) [S7MR] (STJ11101597)

GENERAL INFORMATION

| | |
|---------------|--------------------------|
| Product Type | Primary antibodies |
| Applications | WB/IHC-P/IF/ICC/IP/ELISA |
| Host / Source | Rabbit |
| Reactivity | Human/Mouse/Rat |

PRODUCT PROPERTIES

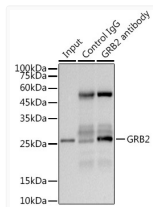
| | |
|---------------------|--|
| Clonality | Monoclonal |
| Concentration | Lot specific |
| Conjugation | Unconjugated |
| Purification | Affinity purification |
| Dilution Range | WB:1:1000-1:6000 IHC-P:1:200-1:800 IF/CC:1:100-1:800 IP:0.5 Mu g-4 Mu g extracts of whole cells ELISA:Recommended starting concentration is 1 Mu g/mL. Please optimize the concentration based on your spe |
| Formulation | PBS with 0.02% Sodium Azide, 0.05% BSA, 50% Glycerol, pH 7.3. |
| Isotype | IgG |
| Molecular Weight | Protein Mw: 25kDa Observed Mw: 25kDa |
| Storage Instruction | Store at -20°C for up to 1 year from the date of receipt, and avoid repeat freeze-thaw cycles. |

TARGET INFORMATION

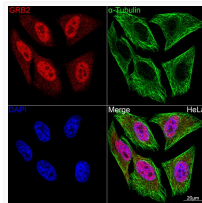
| | |
|--------------------|---|
| Gene ID | 2885 |
| Gene Symbol | GRB2 |
| UniProt ID | GRB2_HUMAN |
| Immunogen Region | 118-217 |
| Immunogen Sequence | YFLWVVKFNLSLNLVDYHRS TSVSRNQQIFLRDIEQVPQQ PTYVQALFDFDPQEDGELGF RRGDFIHVMDNSDPNWWKGA CHGQTGMFPRNYVTPVNRNV |
| Specificity | A synthetic peptide corresponding to a sequence within amino acids 118-217 of human GRB2 (P62993). |

ADDITIONAL INFORMATION

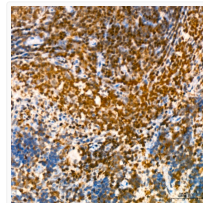
Note **STRICTLY FOR FURTHER SCIENTIFIC RESEARCH USE ONLY (RUO). MUST NOT TO BE USED IN DIAGNOSTIC OR THERAPEUTIC APPLICATIONS.**



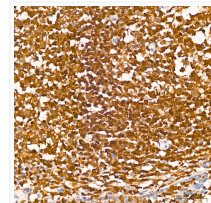
Immunoprecipitation analysis of 300 Mu g extracts from 293T cells using 3 Mu g GRB2 antibody (STJ11101597). Western blot was performed from the immunoprecipitate using GRB2 (STJ11101597) at a dilution of 1:1000.



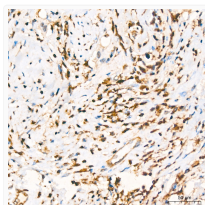
Confocal imaging of HeLa cells using GRB2 Rabbit monoclonal antibody (STJ11101597, dilution 1:100) (Red). The cells were counterstained with Alpha-Tubulin Mouse monoclonal antibody (dilution 1:400) (Green). DAPI was used for nuclear staining (blue). Objective: 100x.



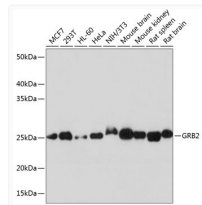
Immunohistochemistry analysis of GRB2 in paraffin-embedded rat spleen using GRB2 Rabbit monoclonal antibody (STJ11101597) at dilution of 1:200 (40x lens). Perform high pressure antigen retrieval with 10 mM citrate buffer pH 6. 0 before commencing with immunohistochemistry staining protocol.



Immunohistochemistry analysis of GRB2 in paraffin-embedded human tonsil using GRB2 Rabbit monoclonal antibody (STJ11101597) at dilution of 1:200 (40x lens). Perform high pressure antigen retrieval with 10 mM citrate buffer pH 6. 0 before commencing with immunohistochemistry staining protocol.



Immunohistochemistry analysis of GRB2 in paraffin-embedded human breast cancer using GRB2 Rabbit monoclonal antibody (STJ11101597) at dilution of 1:200 (40x lens). Perform high pressure antigen retrieval with 10 mM citrate buffer pH 6. 0 before commencing with immunohistochemistry staining protocol.



Western blot analysis of various lysates using GRB2 Rabbit monoclonal antibody (STJ11101597) at 1:1000 dilution. Secondary antibody: HRP Goat Anti-Rabbit IgG (H+L) (STJS000856) at 1:10000 dilution. Lysates/proteins: 25 Mu g per lane. Blocking buffer: 3% nonfat dry milk in TBST. Detection: ECL Basic Kit. Exposure time: 5s.