

Anti-GBA antibody (437-536) [S5MR] (STJ11101595)

GENERAL INFORMATION

Product Type	Primary antibodies
Applications	WB/IHC-P/ELISA
Host / Source	Rabbit
Reactivity	Human/Rat

PRODUCT PROPERTIES

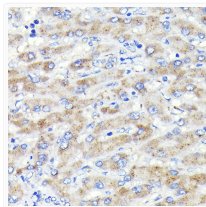
Clonality	Monoclonal
Concentration	Lot specific
Conjugation	Unconjugated
Purification	Affinity purification
Dilution Range	WB:1:1000-1:2000 IHC-P:1:100-1:500 ELISA:Recommended starting concentration is 1 Mu g/mL. Please optimize the concentration based on your specific assay requirements.
Formulation	PBS with 0.02% Sodium Azide, 0.05% BSA, 50% Glycerol, pH 7.3.
Isotype	IgG
Molecular Weight	Protein Mw: 60kDa Observed Mw: 60kDa
Storage Instruction	Store at -20°C for up to 1 year from the date of receipt, and avoid repeat freeze-thaw cycles.

TARGET INFORMATION

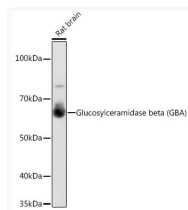
Gene ID	2629
Gene Symbol	GBA1
UniProt ID	GBA1_HUMAN
Immunogen Region	437-536
Immunogen Sequence	VDSPIIVDITKDTFYKQPMF YHLGHFSKFIPEGSRVGLV ASQKNDLDAVALMHPDGSVAVVVLNRSSKDVPLTIKDPV GFLETISPGYSIHTYLWRRQ
Specificity	A synthetic peptide corresponding to a sequence within amino acids 437-536 of human Glucosylceramidase beta (GBA) (P04062).

ADDITIONAL INFORMATION

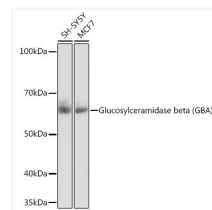
Note STRICTLY FOR FURTHER SCIENTIFIC RESEARCH USE ONLY (RUO). MUST NOT TO BE USED IN DIAGNOSTIC OR THERAPEUTIC APPLICATIONS.



Immunohistochemistry analysis of paraffin-embedded human liver using Glucosylceramidase beta (Glucosylceramidase beta (GBA)) Rabbit monoclonal antibody (STJ11101595) at dilution of 1:100 (40x lens). Perform microwave antigen retrieval with 10 mM PBS buffer pH 7. 2 before commencing with immunohistochemistry staining protocol.



Western blot analysis of extracts of Rat brain, using Glucosylceramidase beta (Glucosylceramidase beta (GBA)) antibody (STJ11101595) at 1:1000 dilution. Secondary antibody: HRP Goat Anti-Rabbit IgG (H+L) (STJS000856) at 1:10000 dilution. Lysates/proteins: 25 Mu g per lane. Blocking buffer: 3% nonfat dry milk in TBST. Detection: ECL Basic Kit. Exposure time: 3min.



Western blot analysis of extracts of various cell lines, using Glucosylceramidase beta (Glucosylceramidase beta (GBA)) antibody (STJ11101595) at 1:1000 dilution. Secondary antibody: HRP Goat Anti-Rabbit IgG (H+L) (STJS000856) at 1:10000 dilution. Lysates/proteins: 25 Mu g per lane. Blocking buffer: 3% nonfat dry milk in TBST. Detection: ECL Basic Kit. Exposure time: 10s.