

Anti-GAPDH antibody (4-335) [S4MR] (STJ11101594)

GENERAL INFORMATION

Product Type	Primary antibodies
Applications	WB/IHC-P/IF/ICC/ELISA
Host / Source	Rabbit
Reactivity	Human/Mouse/Rat

PRODUCT PROPERTIES

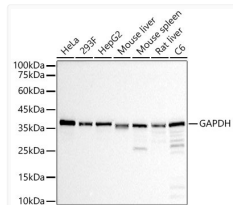
Clonality	Monoclonal
Concentration	Lot specific
Conjugation	Unconjugated
Purification	Affinity purification
Dilution Range	WB:1:50000-1:200000 IHC-P:1:500-1:1000 IF/ICC:1:50-1:200 ELISA:Recommended starting concentration is 1 Mu g/mL. Please optimize the concentration based on your specific assay requirements.
Formulation	PBS with 0.05% Proclin300, 0.05% BSA, 50% Glycerol, pH 7.3.
Isotype	IgG
Molecular Weight	Protein Mw: 36kDa Observed Mw: 36kDa
Storage Instruction	Store at -20°C for up to 1 year from the date of receipt, and avoid repeat freeze-thaw cycles.

TARGET INFORMATION

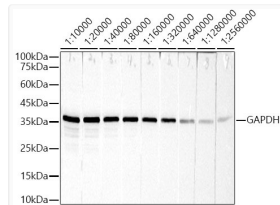
Gene ID	2597
Gene Symbol	GAPDH
UniProt ID	G3P_HUMAN
Immunogen Region	4-335
Immunogen Sequence	VKVGVNGFGRIGRLVTRAAF NSGKVDIVAINDPFIDLNYM VYMFQYDSTHGKFGHTVKAE NGKLVINGNPITIFQERDPS KIKWGDAGAEYVVESTGVFT TMEKAGAHLQGGAKRVIISA PSADAPMFVGMVNHKEYDNS LKIIASNASTTNCPLAKV IHDNFGIVEGLMTTVHAITA TQKTVDGSPGKLRDGRGAL QNIIPASTGAAKAVGKVIPE LNGKLTGMAFRVPTANVSV
Specificity	Recombinant fusion protein containing a sequence corresponding to amino acids 4-335 of human GAPDH (NP_002037.2).

ADDITIONAL INFORMATION

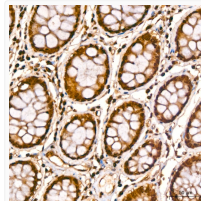
Note STRICTLY FOR FURTHER SCIENTIFIC RESEARCH USE ONLY (RUO). MUST NOT TO BE USED IN DIAGNOSTIC OR THERAPEUTIC APPLICATIONS.



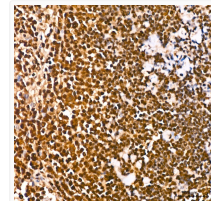
Western blot analysis of various lysates, using GAPDH antibody (STJ11101594) at 1:100000 dilution. Secondary antibody: HRP Goat Anti-rabbit IgG (H+L) (STJS000856) at 1:10000 dilution. Lysates/proteins: 25 Mu g per lane. Blocking buffer: 3% non-fat dry milk in TBST. Detection: ECL Basic Kit. Exposure time: 10s.



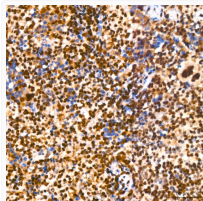
Western blot analysis of HeLa cells, using GAPDH rabbit monoclonal antibody (STJ11101594) at 1:10000-1:2560000 dilution. Secondary antibody: HRP Goat Anti-rabbit IgG (H+L) (STJS000856) at 1:10000 dilution. Lysates/proteins: 25 Mu g per lane. Blocking buffer: 3% non-fat dry milk in TBST. Detection: ECL Basic Kit. Exposure time: 10s.



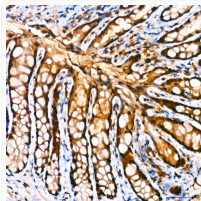
Immunohistochemistry analysis of paraffin-embedded human colon using GAPDH rabbit monoclonal antibody (STJ11101594) at dilution of 1:800 (40x lens). Perform high pressure antigen retrieval with 10 mM citrate buffer pH 6.0 before commencing with immunohistochemistry staining protocol.



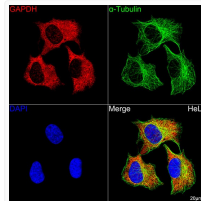
Immunohistochemistry analysis of paraffin-embedded human spleen using GAPDH rabbit monoclonal antibody (STJ11101594) at dilution of 1:800 (40x lens). Perform high pressure antigen retrieval with 10 mM citrate buffer pH 6.0 before commencing with immunohistochemistry staining protocol.



Immunohistochemistry analysis of paraffin-embedded mouse spleen using GAPDH rabbit monoclonal antibody (STJ11101594) at dilution of 1:800 (40x lens). Perform high pressure antigen retrieval with 10 mM citrate buffer pH 6.0 before commencing with immunohistochemistry staining protocol.



Immunohistochemistry analysis of paraffin-embedded rat colon using GAPDH rabbit monoclonal antibody (STJ11101594) at dilution of 1:800 (40x lens). Perform high pressure antigen retrieval with 10 mM citrate buffer pH 6.0 before commencing with immunohistochemistry staining protocol.



Confocal imaging of HeLa cells using GAPDH rabbit monoclonal antibody (STJ11101594, dilution 1:100) (Red). The cells were counterstained with Alpha-Tubulin mouse monoclonal antibody (dilution 1:400) (Green). DAPI was used for nuclear staining (blue). Objective: 100x.