

## Anti-GAP43 antibody (139-238) [S3MR] (STJ11101593)

### GENERAL INFORMATION

Product Type	Primary antibodies
Applications	WB/IF/ICC/ELISA
Host / Source	Rabbit
Reactivity	Human/Mouse/Rat

### PRODUCT PROPERTIES

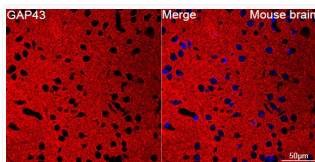
Clonality	Monoclonal
Concentration	Lot specific
Conjugation	Unconjugated
Purification	Affinity purification
Dilution Range	WB:1:1000-1:6000 IF/CC:1:200-1:800 ELISA:Recommended starting concentration is 1 Mu g/mL. Please optimize the concentration based on your specific assay requirements.
Formulation	PBS with 0.02% Sodium Azide, 0.05% BSA, 50% Glycerol, pH 7.3.
Isotype	IgG
Molecular Weight	Protein Mw: 25kDa Observed Mw: 43-48kDa
Storage Instruction	Store at -20°C for up to 1 year from the date of receipt, and avoid repeat freeze-thaw cycles.

### TARGET INFORMATION

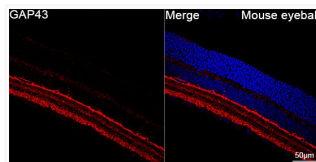
Gene ID	<a href="#">2596</a>
Gene Symbol	<a href="#">GAP43</a>
UniProt ID	<a href="#">NEUM_HUMAN</a>
Immunogen Region	139-238
Immunogen Sequence	ETESATKASTDNPSSKAED APAKEEPKQADVPAAVTAAA ATTPAEDAAAKATAQPSTE TGESSQAEEENIEAVDETKPK ESARQDEGKEEEPEADQEHA
Specificity	A synthetic peptide corresponding to a sequence within amino acids 139-238 of human GAP43 (P17677).

### ADDITIONAL INFORMATION

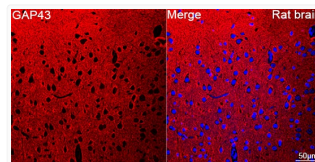
Note STRICTLY FOR FURTHER SCIENTIFIC RESEARCH USE ONLY (RUO). MUST NOT TO BE USED IN DIAGNOSTIC OR THERAPEUTIC APPLICATIONS.



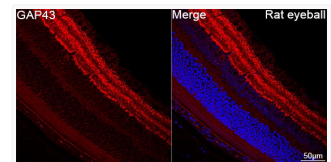
Confocal imaging of paraffin-embedded Mouse brain tissue using GAP43 Rabbit monoclonal antibody (STJ11101593, dilution 1:200) followed by a further incubation with Cy3 Goat Anti-Rabbit IgG (H+L) ( dilution 1:500) (Red). DAPI was used for nuclear staining (Blue). Objective: 40x. Perform microwave antigen retrieval with 0. 01 M citrate buffer (pH 6. 0) prior to IF staining.



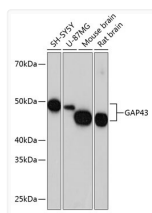
Confocal imaging of paraffin-embedded Mouse eye tissue using GAP43 Rabbit monoclonal antibody (STJ11101593, dilution 1:200) followed by a further incubation with Cy3 Goat Anti-Rabbit IgG (H+L) ( dilution 1:500) (Red). DAPI was used for nuclear staining (Blue). Objective: 40x. Perform high pressure antigen retrieval with 0. 01 M citrate buffer (pH 6. 0) prior to IF staining.



Confocal imaging of paraffin-embedded Rat brain tissue using GAP43 Rabbit monoclonal antibody (STJ11101593, dilution 1:200) followed by a further incubation with Cy3 Goat Anti-Rabbit IgG (H+L) ( dilution 1:500) (Red). DAPI was used for nuclear staining (Blue). Objective: 40x. Perform microwave antigen retrieval with 0. 01 M citrate buffer (pH 6. 0) prior to IF staining.



Confocal imaging of paraffin-embedded Rat eye tissue using GAP43 Rabbit monoclonal antibody (STJ11101593, dilution 1:200) followed by a further incubation with Cy3 Goat Anti-Rabbit IgG (H+L) ( dilution 1:500) (Red). DAPI was used for nuclear staining (Blue). Objective: 40x. Perform high pressure antigen retrieval with 0. 01 M citrate buffer (pH 6. 0) prior to IF staining.



Western blot analysis of various lysates using GAP43 Rabbit monoclonal antibody (STJ11101593) at 1:1000 dilution. Secondary antibody: HRP Goat Anti-Rabbit IgG (H+L) (STJS000856) at 1:10000 dilution. Lysates/proteins: 25 Mu g per lane. Blocking buffer: 3% nonfat dry milk in TBST. Detection: ECL Basic Kit. Exposure time: 10s.