

Anti-FGFR3 antibody (1-100) [S0MR] (STJ11101590)

GENERAL INFORMATION

Product Type	Primary antibodies
Applications	WB/IHC-P/ELISA
Host / Source	Rabbit
Reactivity	Human/Mouse/Rat

PRODUCT PROPERTIES

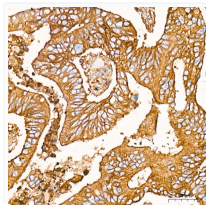
Clonality	Monoclonal
Concentration	Lot specific
Conjugation	Unconjugated
Purification	Affinity purification
Dilution Range	WB:1:1000-1:4000 IHC-P:1:1000-1:5000 ELISA:Recommended starting concentration is 1 Mu g/mL. Please optimize the concentration based on your specific assay requirements.
Formulation	PBS with 0.02% Sodium Azide, 0.05% BSA, 50% Glycerol, pH 7.3.
Isotype	IgG
Molecular Weight	Protein Mw: 88kDa Observed Mw: 110kDa
Storage Instruction	Store at -20°C for up to 1 year from the date of receipt, and avoid repeat freeze-thaw cycles.

TARGET INFORMATION

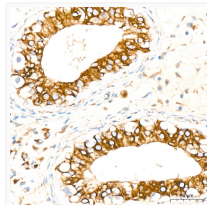
Gene ID	2261
Gene Symbol	FGFR3
UniProt ID	FGFR3_HUMAN
Immunogen Region	1-100
Immunogen Sequence	MGAPACALALCVAVAIVAGA SSES LGTEQRVVGRAAEVPG PEPGQQEQLVFGSGDAVELS CPPPGGGPMGPTVWVKDGTG LVPSE RLVLPQRLQVLNAS
Specificity	A synthetic peptide corresponding to a sequence within amino acids 1-100 of human FGFR3 (P22607).

ADDITIONAL INFORMATION

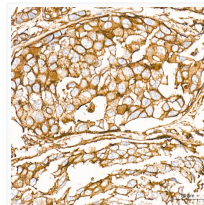
Note STRICTLY FOR FURTHER SCIENTIFIC RESEARCH USE ONLY (RUO). MUST NOT TO BE USED IN DIAGNOSTIC OR THERAPEUTIC APPLICATIONS.



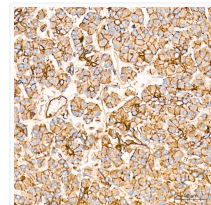
Immunohistochemistry analysis of FGFR3 in paraffin-embedded human colon carcinoma tissue using FGFR3 Rabbit monoclonal antibody (STJ11101590) at a dilution of 1:2000 (40x lens). High pressure antigen retrieval was performed with 0.01 M citrate buffer (pH 6.0) prior to immunohistochemistry staining.



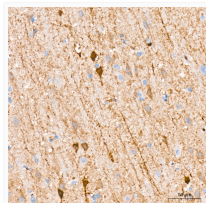
Immunohistochemistry analysis of FGFR3 in paraffin-embedded human testis tissue using FGFR3 Rabbit monoclonal antibody (STJ11101590) at a dilution of 1:2000 (40x lens). High pressure antigen retrieval was performed with 0.01 M citrate buffer (pH 6.0) prior to immunohistochemistry staining.



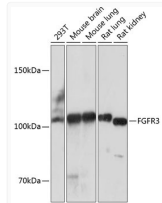
Immunohistochemistry analysis of FGFR3 in paraffin-embedded human breast cancer tissue using FGFR3 Rabbit monoclonal antibody (STJ11101590) at a dilution of 1:2000 (40x lens). High pressure antigen retrieval was performed with 0.01 M citrate buffer (pH 6.0) prior to immunohistochemistry staining.



Immunohistochemistry analysis of FGFR3 in paraffin-embedded human pancreas tissue using FGFR3 Rabbit monoclonal antibody (STJ11101590) at a dilution of 1:2000 (40x lens). High pressure antigen retrieval was performed with 0.01 M citrate buffer (pH 6.0) prior to immunohistochemistry staining.



Immunohistochemistry analysis of FGFR3 in paraffin-embedded human brain tissue using FGFR3 Rabbit monoclonal antibody (STJ11101590) at a dilution of 1:2000 (40x lens). High pressure antigen retrieval was performed with 0.01 M citrate buffer (pH 6.0) prior to immunohistochemistry staining.



Western blot analysis of various lysates using FGFR3 Rabbit monoclonal antibody (STJ11101590) at 1:1000 dilution. Secondary antibody: HRP Goat Anti-Rabbit IgG (H+L) (STJS000856) at 1:10000 dilution. Lysates/proteins: 25 Mu g per lane. Blocking buffer: 3% nonfat dry milk in TBST. Detection: ECL Basic Kit. Exposure time: 3min.