

## Anti-CCND1 antibody (196-295) [S6MR] (STJ11101576)

### GENERAL INFORMATION

|               |                    |
|---------------|--------------------|
| Product Type  | Primary antibodies |
| Applications  | WB/IF/ICC/ELISA    |
| Host / Source | Rabbit             |
| Reactivity    | Human/Mouse/Rat    |

### PRODUCT PROPERTIES

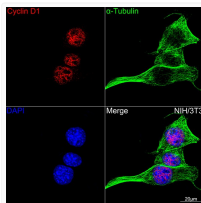
|                     |  |
|---------------------|--|
| Clonality           | Monoclonal   |
| Concentration       | Lot specific   |
| Conjugation         | Unconjugated   |
| Purification        | Affinity purification  |
| Dilution Range      | WB:1:1000-1:2000<br>IF/CC:1:100-1:800<br>ELISA:Recommended starting concentration is 1 Mu g/mL. Please optimize the concentration based on your specific assay requirements. |
| Formulation         | PBS with 0.09% Sodium Azide, 0.05% BSA, 50% Glycerol, pH7.3.   |
| Isotype             | IgG  |
| Molecular Weight    | Protein Mw: 34kDa<br>Observed Mw: 34kDa  |
| Storage Instruction | Store at -20°C for up to 1 year from the date of receipt, and avoid repeat freeze-thaw cycles.   |

### TARGET INFORMATION

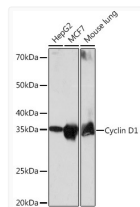
|                    |   |
|--------------------|---|
| Gene ID            | <a href="#">595</a>   |
| Gene Symbol        | <a href="#">CCND1</a>   |
| UniProt ID         | <a href="#">CCND1_HUMAN</a>   |
| Immunogen Region   | 196-295   |
| Immunogen Sequence | ISNPPSMVAAGSVVAAVQGL NLRSPNNFLSYRRLTRFLSR VIKCDPDCLRACQEIEALL<br>ESSLRQAQQNMDPKAAEEEE EEEEEVDLACTPTDVRVDI |
| Specificity        | A synthetic peptide corresponding to a sequence within amino acids 196-295 of human Cyclin D1 (P24385).   |

### ADDITIONAL INFORMATION

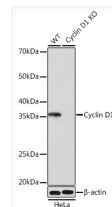
Note STRICTLY FOR FURTHER SCIENTIFIC RESEARCH USE ONLY (RUO). MUST NOT TO BE USED IN DIAGNOSTIC OR THERAPEUTIC APPLICATIONS.



Confocal imaging of NIH/3T3 cells using [KO Validated] Cyclin D1 Rabbit monoclonal antibody (STJ11101576, dilution 1:100) (Red). The cells were counterstained with Alpha-Tubulin Mouse monoclonal antibody (dilution 1:400) (Green). DAPI was used for nuclear staining (blue). Objective: 100x.



Western blot analysis of various lysates using [KO Validated] Cyclin D1 Rabbit monoclonal antibody (STJ11101576) at 1:1000 dilution. Secondary antibody: HRP Goat Anti-Rabbit IgG (H+L) (STJS000856) at 1:10000 dilution. Lysates/proteins: 25 Mu g per lane. Blocking buffer: 3% nonfat dry milk in TBST. Detection: ECL Basic Kit. Exposure time: 1min.



Western blot analysis of lysates from wild type (WT) and Cyclin D1 knockout (KO) HeLa cells, using [KO Validated] Cyclin D1 Rabbit monoclonal antibody (STJ11101576) at 1:1000 dilution. Secondary antibody: HRP Goat Anti-Rabbit IgG (H+L) (STJS000856) at 1:10000 dilution. Lysates/proteins: 25 Mu g per lane. Blocking buffer: 3% nonfat dry milk in TBST. Detection: ECL Basic Kit. Exposure time: 1min.