

Anti-CCNA2 antibody (11-210) [S4MR] (STJ11101574)

GENERAL INFORMATION

Product Type	Primary antibodies
Applications	WB/IHC-P/IF/ICC/IP/ELISA
Host / Source	Rabbit
Reactivity	Human/Mouse/Rat

PRODUCT PROPERTIES

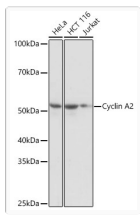
Clonality	Monoclonal
Concentration	Lot specific
Conjugation	Unconjugated
Purification	Affinity purification
Dilution Range	WB:1:1000-1:6000 IHC-P:1:200-1:2000 IF/CC:1:100-1:1000 IP:0.5 Mu g-4 Mu g antibody for 200 Mu g-400 Mu g extracts of whole cells ELISA:Recommended starting concentration is 1 Mu g/mL. Please optimize the concentration based on your s
Formulation	PBS with 0.02% Sodium Azide, 0.05% BSA, 50% Glycerol, pH 7.3.
Isotype	IgG
Molecular Weight	Protein Mw: 49kDa Observed Mw: 55kDa
Storage Instruction	Store at -20°C for up to 1 year from the date of receipt, and avoid repeat freeze-thaw cycles.

TARGET INFORMATION

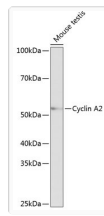
Gene ID	890
Gene Symbol	CCNA2
UniProt ID	CCNA2_HUMAN
Immunogen Region	11-210
Immunogen Sequence	TREAGSALLALQQTALQEDQ ENINPEKAAPVQQPRTRAAL AVLKSGNPRGLAQQQRPKTR RVAPLKDLPVNDEHVTVPW KANSKQPAFTIHVDEAEKEA QKKPAESQKIEREDALAFNS AISLPGPRKPLVPLDYPMDG SFESPHTMDSIILEDEKPV SVNEVPDYHEDIHTYLREME VKCKPKVGYMKKQPDITNSM
Specificity	Recombinant fusion protein containing a sequence corresponding to amino acids 11-210 of human Cyclin A2 (P20248).

ADDITIONAL INFORMATION

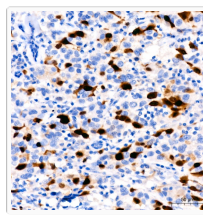
Note	STRICTLY FOR FURTHER SCIENTIFIC RESEARCH USE ONLY (RUO). MUST NOT TO BE USED IN DIAGNOSTIC OR THERAPEUTIC APPLICATIONS.
------	---



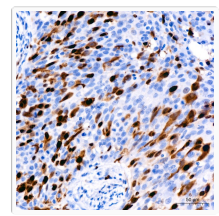
Western blot analysis of extracts of various cell lines, using Cyclin A2 antibody (STJ11101574) at 1:1000 dilution. Secondary antibody: HRP Goat Anti-rabbit IgG (H+L) (STJS000856) at 1:10000 dilution. Lysates/proteins: 25 Mu g per lane. Blocking buffer: 3% non-fat dry milk in TBST. Detection: ECL Basic Kit. Exposure time: 1s.



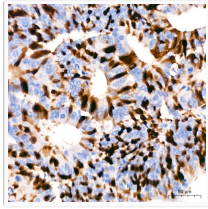
Western blot analysis of extracts of mouse testis, using Cyclin A2 antibody (STJ11101574) at 1:1000 dilution. Secondary antibody: HRP Goat Anti-rabbit IgG (H+L) (STJS000856) at 1:10000 dilution. Lysates/proteins: 25 Mu g per lane. Blocking buffer: 3% non-fat dry milk in TBST. Detection: ECL Basic Kit. Exposure time: 10s.



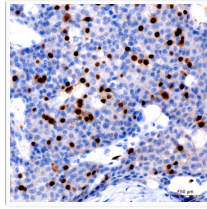
Immunohistochemistry analysis of paraffin-embedded human breast cancer using Cyclin A2 rabbit monoclonal antibody (STJ11101574) at dilution of 1:200 (40x lens). Perform high pressure antigen retrieval with 10 mM citrate buffer pH 6.0 before commencing with immunohistochemistry staining protocol.



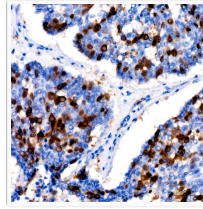
Immunohistochemistry analysis of paraffin-embedded Human cervical squamous cell carcinoma using Cyclin A2 rabbit monoclonal antibody (STJ11101574) at dilution of 1:200 (40x lens). Perform high pressure antigen retrieval with 10 mM citrate buffer pH 6.0 before commencing with immunohistochemistry staining protocol.



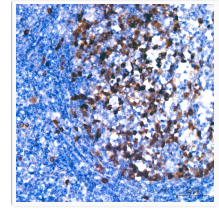
Immunohistochemistry analysis of paraffin-embedded human colon carcinoma using Cyclin A2 rabbit monoclonal antibody (STJ11101574) at dilution of 1:200 (40x lens). Perform high pressure antigen retrieval with 10 mM citrate buffer pH 6.0 before commencing with immunohistochemistry staining protocol.



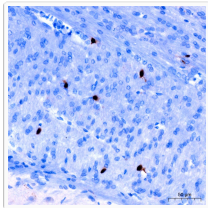
Immunohistochemistry analysis of paraffin-embedded human liver cancer using Cyclin A2 rabbit monoclonal antibody (STJ11101574) at dilution of 1:200 (40x lens). Perform high pressure antigen retrieval with 10 mM citrate buffer pH 6.0 before commencing with immunohistochemistry staining protocol.



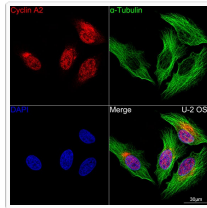
Immunohistochemistry analysis of paraffin-embedded human lung cancer using Cyclin A2 rabbit monoclonal antibody (STJ11101574) at dilution of 1:200 (40x lens). Perform high pressure antigen retrieval with 10 mM citrate buffer pH 6.0 before commencing with immunohistochemistry staining protocol.



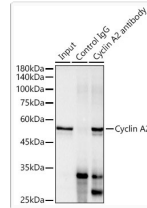
Immunohistochemistry analysis of paraffin-embedded human tonsil using Cyclin A2 rabbit monoclonal antibody (STJ11101574) at dilution of 1:200 (40x lens). Perform high pressure antigen retrieval with 10 mM citrate buffer pH 6.0 before commencing with immunohistochemistry staining protocol.



Immunohistochemistry analysis of paraffin-embedded rat brain using Cyclin A2 rabbit monoclonal antibody (STJ11101574) at dilution of 1:200 (40x lens). Perform high pressure antigen retrieval with 10 mM citrate buffer pH 6.0 before commencing with immunohistochemistry staining protocol.



Confocal imaging of U-2 OS cells using Cyclin A2 rabbit monoclonal antibody (STJ11101574, at dilution of 1:100) (Red). The cells were counterstained with Alpha-Tubulin mouse monoclonal antibody (dilution 1:400) (Green). DAPI was used for nuclear staining (blue). Objective: 100x.



Immunoprecipitation analysis of 300 Mu g extracts of HeLa cells using 3 Mu g Cyclin A2 antibody (STJ11101574). Western blot was performed from the immunoprecipitate using Cyclin A2 antibody (STJ11101574) at a dilution of 1:1000.