

Anti-MYC antibody (1-100) [S0MR] (STJ11101570)

GENERAL INFORMATION

Product Type	Primary antibodies
Applications	WB/ELISA/ChIP/CUT&Tag
Host / Source	Rabbit
Reactivity	Human

PRODUCT PROPERTIES

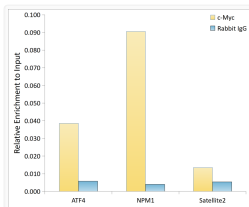
Clonality	Monoclonal
Concentration	Lot specific
Conjugation	Unconjugated
Purification	Affinity purification
Dilution Range	WB:1:1000-1:2000 ELISA:Recommended starting concentration is 1 Mu g/mL. Please optimize the concentration based on your specific assay requirements. ChIP:5 Mu g antibody for 10 Mu g-15 Mu g of Chromatin CUT&Tag: 10 ⁵ cells/1 Mu g
Formulation	PBS with 0.02% Sodium Azide, 0.05% BSA, 50% Glycerol, pH 7.3.
Isotype	IgG
Molecular Weight	Protein Mw: 51kDa Observed Mw: 50-60kDa
Storage Instruction	Store at -20°C for up to 1 year from the date of receipt, and avoid repeat freeze-thaw cycles.

TARGET INFORMATION

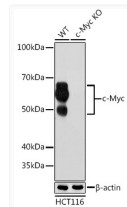
Gene ID	4609
Gene Symbol	MYC
UniProt ID	MYC_HUMAN
Immunogen Region	1-100
Immunogen Sequence	MPLNVSFTNRNYDLDYDSVQ PYFYCDEEENFYQQQQQSEL QPPAPSEDIWKKFELLPTPP LPSRRRSLGLCSPSYVAVTPF SLRGDNDGGGGSFSTADQLE
Specificity	A synthetic peptide corresponding to a sequence within amino acids 1-100 of human c-Myc (P01106).

ADDITIONAL INFORMATION

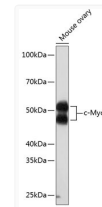
Note STRICTLY FOR FURTHER SCIENTIFIC RESEARCH USE ONLY (RUO). MUST NOT TO BE USED IN DIAGNOSTIC OR THERAPEUTIC APPLICATIONS.



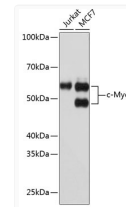
Chromatin immunoprecipitation analysis of extracts of K562 cells, using c-Myc antibody (STJ11101570) and rabbit IgG. The amount of immunoprecipitated DNA was checked by quantitative PCR. Histogram was constructed by the ratios of the immunoprecipitated DNA to the input.



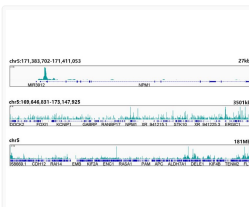
Western blot analysis of lysates from wild type (WT) and c-Myc knockout (KO) HCT 116 cells, using [KO Validated] c-Myc Rabbit monoclonal antibody (STJ11101570) at 1:1000 dilution. Secondary antibody: HRP Goat Anti-Rabbit IgG (H+L) (STJS000856) at 1:10000 dilution. Lysates/proteins: 25 Mu g per lane. Blocking buffer: 3% nonfat dry milk in TBST. Detection: ECL Basic Kit. Exposure time: 10s.



Western blot analysis of lysates from Mouse ovary, using [KO Validated] c-Myc Rabbit monoclonal antibody (STJ11101570) at 1:1000 dilution. Secondary antibody: HRP Goat Anti-Rabbit IgG (H+L) (STJS000856) at 1:10000 dilution. Lysates/proteins: 25 Mu g per lane. Blocking buffer: 3% nonfat dry milk in TBST. Detection: ECL Enhanced Kit. Exposure time: 3min.



Western blot analysis of various lysates using [KO Validated] c-Myc Rabbit monoclonal antibody (STJ11101570) at 1:1000 dilution. Secondary antibody: HRP Goat Anti-Rabbit IgG (H+L) (STJS000856) at 1:10000 dilution. Lysates/proteins: 25 Mu g per lane. Blocking buffer: 3% nonfat dry milk in TBST. Detection: ECL Basic Kit. Exposure time: 10s.



UT&Tag was performed using the CUT&Tag Assay Kit (pAG-Tn5) for Illumina (RK20265) from 10⁵ K562 cells with 1 Mu g c-Myc Rabbit monoclonal antibody (STJ11101570), along with a Goat Anti-Rabbit IgG (H+L). The CUT&Tag results indicate the enrichment pattern of ESE1 in representative gene loci (NPM1), as shown in figure.