

Anti-ITGAM antibody (1053-1152) [S8MR] (STJ11101548)

GENERAL INFORMATION

Product Type	Primary antibodies
Applications	WB/IHC-P/FC/ELISA
Host / Source	Rabbit
Reactivity	Human

PRODUCT PROPERTIES

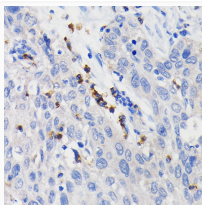
Clonality	Monoclonal
Concentration	Lot specific
Conjugation	Unconjugated
Purification	Affinity purification
Dilution Range	WB:1:500-1:1000 IHC-P:1:50-1:200 FC:1:50-1:200 ELISA:Recommended starting concentration is 1 µg/mL. Please optimize the concentration based on your specific assay requirements.
Formulation	PBS with 0.02% Sodium Azide, 0.05% BSA, 50% Glycerol, pH 7.3.
Isotype	IgG
Molecular Weight	Protein Mw: 127kDa Observed Mw:
Storage Instruction	Store at -20°C for up to 1 year from the date of receipt, and avoid repeat freeze-thaw cycles.

TARGET INFORMATION

Gene ID	3684
Gene Symbol	ITGAM
UniProt ID	ITAM_HUMAN
Immunogen Region	1053-1152
Immunogen Sequence	FDWYIKTSHNHLLIVSTAEI LFNDSVFTLLPGQGAFVRSQ TETKVEPFVFNPLPLIVGS SVGGLLLLLALITAALYKLG FKRQYKDMMSEGGPPGAEPQ
Specificity	A synthetic peptide corresponding to a sequence within amino acids 1053-1152 of human CD11b/ITGAM (P11215).

ADDITIONAL INFORMATION

Note	STRICTLY FOR FURTHER SCIENTIFIC RESEARCH USE ONLY (RUO). MUST NOT TO BE USED IN DIAGNOSTIC OR THERAPEUTIC APPLICATIONS.
------	---



Immunohistochemistry analysis of CD11b/ITGAM in paraffin-embedded human lung cancer using CD11b/ITGAM Rabbit monoclonal antibody (STJ11101548) at dilution of 1:100 (40x lens). Perform microwave antigen retrieval with 10 mM PBS buffer pH 7.2 before commencing with immunohistochemistry staining protocol.