

Anti-RAD21 antibody (281-631) (STJ11101535)

GENERAL INFORMATION

Product Type	Primary antibodies
Applications	WB/IHC-P/IF/ICC/IP/ELISA/ChIP
Host / Source	Rabbit
Reactivity	Human/Mouse/Rat

PRODUCT PROPERTIES

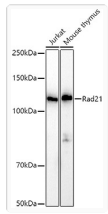
Clonality	Polyclonal
Concentration	Lot specific
Conjugation	Unconjugated
Purification	Affinity purification
Dilution Range	WB:1:500-1:1000 IHC-P:1:50-1:200 IF/CC:1:50-1:200 IP:0.5 Mu g-4 Mu g antibody for 200 Mu g-400 Mu g extracts of whole cells ELISA:Recommended starting concentration is 1 Mu g/mL. Please optimize the concentration based on your specif
Formulation	PBS with 0.05% Proclin300, 50% Glycerol, pH 7.3.
Isotype	IgG
Molecular Weight	Protein Mw: 72kDa Observed Mw: 130kDa
Storage Instruction	Store at-20°C for up to 1 year from the date of receipt, and avoid repeat freeze-thaw cycles.

TARGET INFORMATION

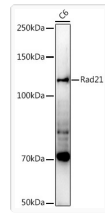
Gene ID	5885
Gene Symbol	RAD21
UniProt ID	RAD21_HUMAN
Immunogen Region	281-631
Immunogen Sequence	VDPVEPMPTMTDQTTLPVNE EFAFALEPIDIVKETKAKR KRKLVDSVKELDSKTIRAQ LSDYSDIVTTLDLAPPTKKL MMWKETGGVEKLFSLPAQPL WNNRLLKLFTRCLTPLVPED LRKRRKGGGEADNLDEFLEKEF
Specificity	Recombinant fusion protein containing a sequence corresponding to amino acids 281-420 of human Rad21 (NP_006256.1).

ADDITIONAL INFORMATION

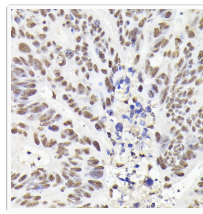
Note	STRICTLY FOR FURTHER SCIENTIFIC RESEARCH USE ONLY (RUO). MUST NOT TO BE USED IN DIAGNOSTIC OR THERAPEUTIC APPLICATIONS.
------	---



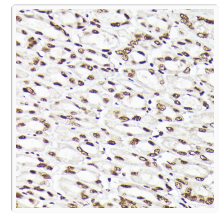
Western blot analysis of extracts of various cell lines, using Rad21 antibody (STJ11101535) at 1:1000 dilution. Secondary antibody: HRP Goat Anti-rabbit IgG (H+L) (STJS000856) at 1:10000 dilution. Lysates/proteins: 25 μ g per lane. Blocking buffer: 3% non-fat dry milk in TBST. Detection: ECL Basic Kit. Exposure time: 10s.



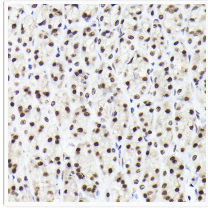
Western blot analysis of extracts of C6 cells, using Rad21 antibody (STJ11101535) at 1:1000 dilution. Secondary antibody: HRP Goat Anti-rabbit IgG (H+L) (STJS000856) at 1:10000 dilution. Lysates/proteins: 25 μ g per lane. Blocking buffer: 3% non-fat dry milk in TBST. Detection: ECL Enhanced Kit. Exposure time: 90s.



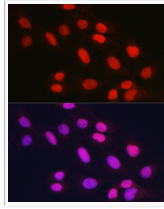
Immunohistochemistry analysis of paraffin-embedded human colon carcinoma using Rad21 rabbit polyclonal antibody (STJ11101535) at dilution of 1:200 (40x lens). Perform high pressure antigen retrieval with 10 mM citrate buffer pH 6.0 before commencing with immunohistochemistry staining protocol.



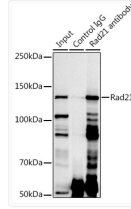
Immunohistochemistry analysis of paraffin-embedded mouse stomach using Rad21 rabbit polyclonal antibody (STJ11101535) at dilution of 1:200 (40x lens). Perform high pressure antigen retrieval with 10 mM citrate buffer pH 6.0 before commencing with immunohistochemistry staining protocol.



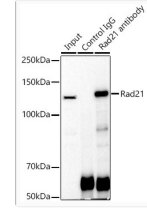
Immunohistochemistry analysis of paraffin-embedded rat stomach using Rad21 rabbit polyclonal antibody (STJ11101535) at dilution of 1:200 (40x lens). Perform high pressure antigen retrieval with 10 mM citrate buffer pH 6.0 before commencing with immunohistochemistry staining protocol.



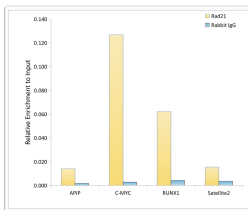
Immunofluorescence analysis of U2OS cells using Rad21 rabbit polyclonal antibody (STJ11101535) at dilution of 1:100 (40x lens). Blue: DAPI for nuclear staining.



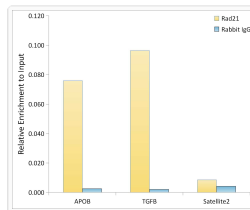
Immunoprecipitation analysis of 300 μ g extracts of Jurkat cells using 3 μ g Rad21 antibody (STJ11101535). Western blot was performed from the immunoprecipitate using Rad21 antibody (STJ11101535) at a dilution of 1:1000.



Immunoprecipitation analysis of 300 μ g extracts of Jurkat cells using 3 μ g Rad21 antibody (STJ11101535). Western blot was performed from the immunoprecipitate using Rad21 antibody (STJ11101535) at a dilution of 1:1000.



Chromatin immunoprecipitation analysis of extracts of A-549 cells, using Rad21 antibody (STJ11101535) and rabbit IgG. The amount of immunoprecipitated DNA was checked by quantitative PCR. Histogram was constructed by the ratios of the immunoprecipitated DNA to the input.



Chromatin immunoprecipitation analysis of 300 μ g extracts of Jurkat cells using 3 μ g Rad21 antibody (STJ11101535). Western blot was performed from the immunoprecipitate using Rad21 antibody (STJ11101535) at a dilution of 1:1000.