

## Anti-Biotin antibody (STJ11101533)

### GENERAL INFORMATION

|               |                     |
|---------------|---------------------|
| Product Type  | Primary antibodies  |
| Applications  | WB                  |
| Host / Source | Rabbit              |
| Reactivity    | Species Independent |

### PRODUCT PROPERTIES

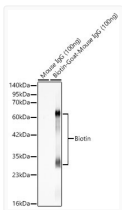
|                     |                                                                                                |
|---------------------|------------------------------------------------------------------------------------------------|
| Clonality           | Polyclonal                                                                                     |
| Concentration       | Lot specific                                                                                   |
| Conjugation         | Unconjugated                                                                                   |
| Purification        | Affinity purification                                                                          |
| Dilution Range      | WB:1:500-1:2000                                                                                |
| Formulation         | PBS with 0.05% Proclin300, 50% Glycerol, pH 7.3.                                               |
| Isotype             | IgG                                                                                            |
| Molecular Weight    | 25kDa (Light chain) , 55kDa (Heavy chain)                                                      |
| Storage Instruction | Store at -20°C for up to 1 year from the date of receipt, and avoid repeat freeze-thaw cycles. |

### TARGET INFORMATION

|             |        |
|-------------|--------|
| Specificity | Biotin |
|-------------|--------|

### ADDITIONAL INFORMATION

Note **STRICTLY FOR FURTHER SCIENTIFIC RESEARCH USE ONLY (RUO). MUST NOT TO BE USED IN DIAGNOSTIC OR THERAPEUTIC APPLICATIONS.**



Western blot analysis of recombinant Biotin-Goat-Mouse IgG Protein using Biotin Rabbit polyclonal antibody (STJ11101533) at 1:1000 dilution. NA NA Secondary antibody: HRP Goat Anti-Rabbit IgG (H+L) (STJS000856) at 1:10000 dilution. NA NA Lysates/proteins: 100 ng per lane. NA NA Blocking buffer: 3% nonfat dry milk in TBST. NA NA Detection: ECL Basic Kit. NA NA Exposure time: 45s.