

Anti-H3K18la antibody (STJ11101498)

GENERAL INFORMATION

Product Type	Primary antibodies
Applications	WB/DB/ELISA
Host / Source	Rabbit
Reactivity	Human/Mouse/Rat/Other

PRODUCT PROPERTIES

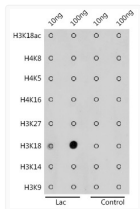
Clonality	Polyclonal
Concentration	Lot specific
Conjugation	Unconjugated
Purification	Affinity purification
Dilution Range	WB:1:500-1:2000 DB:1:500-1:4000 ELISA:Recommended starting concentration is 1 Mu g/mL. Please optimize the concentration based on your specific assay requirements.
Formulation	PBS with 0.05% Proclin300, 50% Glycerol, pH 7.3.
Isotype	IgG
Molecular Weight	Protein Mw: 15kDa Observed Mw: 17kDa
Storage Instruction	Store at -20°C for up to 1 year from the date of receipt, and avoid repeat freeze-thaw cycles.

TARGET INFORMATION

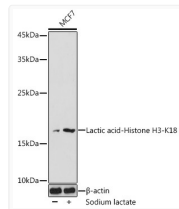
Gene ID	8350/8351/8352/8353/8354/8355/8356/8357/8358/89688290
Gene Symbol	H3C1.H3C2.H3C3.H3C4.H3C6.H3C7.H3C8.H3C10.H3C11.H3C12.H31_HUMAN H31T_HUMAN
Immunogen Sequence	APRKQ
Specificity	A synthetic lactylated peptide around K18 of human Histone H3 (NP_003520.1).

ADDITIONAL INFORMATION

Note **STRICTLY FOR FURTHER SCIENTIFIC RESEARCH USE ONLY (RUO). MUST NOT TO BE USED IN DIAGNOSTIC OR THERAPEUTIC APPLICATIONS.**



Dot-blot analysis of all sorts of peptides using Lactic acid-Histone H3-K18 antibody (STJ11101498) at 1:1000 dilution.



Western blot analysis of lysates from MCF7 cells, using Lactic acid-Histone H3-K18 Rabbit polyclonal antibody (STJ11101498) at 1:500 dilution. MCF7 cells were treated by Sodium lactate (100mM) for 24h. Secondary antibody: HRP Goat Anti-Rabbit IgG (H+L) (STJS000856) at 1:10000 dilution. Lysates/proteins: 25 Mu g per lane. Blocking buffer: 3% BSA. Detection: ECL Basic Kit. Exposure time: 5min.