

Anti-SUPT16H antibody (520-695) (STJ11101487)

GENERAL INFORMATION

Product Type	Primary antibodies
Applications	WB/IF/ICC/ELISA
Host / Source	Rabbit
Reactivity	Human/Mouse/Rat

PRODUCT PROPERTIES

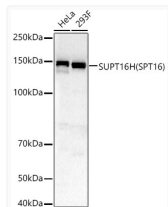
Clonality	Polyclonal
Concentration	Lot specific
Conjugation	Unconjugated
Purification	Affinity purification
Dilution Range	WB:1:500-1:1000 IF/CC:1:50-1:200 ELISA:Recommended starting concentration is 1 Mu g/mL. Please optimize the concentration based on your specific assay requirements.
Formulation	PBS with 0.05% Proclin300, 50% Glycerol, pH 7.3.
Isotype	IgG
Molecular Weight	Protein Mw: 120kDa Observed Mw: 140kDa
Storage Instruction	Store at -20°C for up to 1 year from the date of receipt, and avoid repeat freeze-thaw cycles.

TARGET INFORMATION

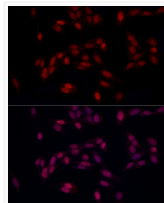
Gene ID	11198
Gene Symbol	SUPT16H
UniProt ID	SP16H_HUMAN
Immunogen Region	520-695
Immunogen Sequence	KEPHIREMKIYIDKKYETVI MPVFGIATPFHIATIKNISM SVEGDYTYLRINFYCPSAL GRNEGNIFPNPEATFVKEIT YRASNIKAPGEQTVPALNLQ NAFRIIKEVQKRYKTREAEI KEKEGIVKQDSLVINLNRSN PKLKDLYIRPNIAQKRMQGS LEAHVNGFRFTSVRGD
Specificity	Recombinant fusion protein containing a sequence corresponding to amino acids 520-695 of human SUPT16H (SPT16) (NP_009123.1).

ADDITIONAL INFORMATION

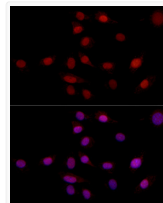
Note STRICTLY FOR FURTHER SCIENTIFIC RESEARCH USE ONLY (RUO). MUST NOT TO BE USED IN DIAGNOSTIC OR THERAPEUTIC APPLICATIONS.



Western blot analysis of various lysates, using SUPT16H (SPT16) rabbit polyclonal antibody (STJ11101487) at 1:400 dilution. Secondary antibody: HRP Goat Anti-rabbit IgG (H+L) (STJS000856) at 1:10000 dilution. Lysates/proteins: 25 Mu g per lane. Blocking buffer: 3% non-fat dry milk in TBST. Detection: ECL Basic Kit. Exposure time: 60s.



Immunofluorescence analysis of U2OS using SUPT16H (SPT16) antibody (STJ11101487) at dilution of 1:100 (40x lens). Blue: DAPI for nuclear staining.



Immunofluorescence analysis of NIH/3T3 using SUPT16H (SPT16) antibody (STJ11101487) at dilution of 1:100 (40x lens). Blue: DAPI for nuclear staining.