

Anti-ATP2B1 antibody (50-150) (STJ11101482)

GENERAL INFORMATION

Product Type	Primary antibodies
Applications	WB/IF/ICC/ELISA
Host / Source	Rabbit
Reactivity	Human/Mouse/Rat

PRODUCT PROPERTIES

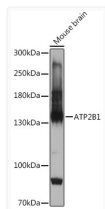
Clonality	Polyclonal
Concentration	Lot specific
Conjugation	Unconjugated
Purification	Affinity purification
Dilution Range	WB:1:500-1:2000 IF/CC:1:50-1:200 ELISA:Recommended starting concentration is 1 µg/mL. Please optimize the concentration based on your specific assay requirements.
Formulation	PBS with 0.05% Proclin300, 50% Glycerol, pH 7.3.
Isotype	IgG
Molecular Weight	Protein Mw: 135kDa Observed Mw: 140kDa
Storage Instruction	Store at -20°C for up to 1 year from the date of receipt, and avoid repeat freeze-thaw cycles.

TARGET INFORMATION

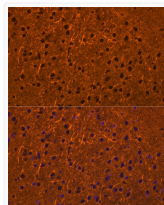
Gene ID	490
Gene Symbol	ATP2B1
UniProt ID	AT2B1_HUMAN
Immunogen Region	50-150
Immunogen Sequence	QESYGDVYGICTKLKTSPNE GLSGNPADLERREAVFGKNF IPPKKPKTFLQLVWEALQDV TLIILEIAAIVSLGLSFYQP PEGDNALCGEVSVGEIEGEG E
Specificity	A synthetic peptide corresponding to a sequence within amino acids 50-150 of human ATP2B1 (NP_001673.2).

ADDITIONAL INFORMATION

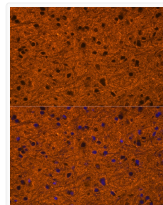
Note **STRICTLY FOR FURTHER SCIENTIFIC RESEARCH USE ONLY (RUO). MUST NOT TO BE USED IN DIAGNOSTIC OR THERAPEUTIC APPLICATIONS.**



Western blot analysis of extracts of mouse brain, using ATP2B1 antibody (STJ11101482) at 1:1000 dilution. Secondary antibody: HRP Goat Anti-rabbit IgG (H+L) (STJS000856) at 1:10000 dilution. Lysates/proteins: 25 µg per lane. Blocking buffer: 3% non-fat dry milk in TBST. Detection: ECL Basic Kit. Exposure time: 5s.



Immunofluorescence analysis of mouse brain cells using ATP2B1 rabbit polyclonal antibody (STJ11101482) at dilution of 1:100 (40x lens). Blue: DAPI for nuclear staining.



Immunofluorescence analysis of rat brain cells using ATP2B1 rabbit polyclonal antibody (STJ11101482) at dilution of 1:100 (40x lens). Blue: DAPI for nuclear staining.