

Anti-SMAD2/SMAD3 antibody (150-270) (STJ11101471)

GENERAL INFORMATION

Product Type	Primary antibodies
Applications	WB/IHC-P/IF/ICC/ELISA
Host / Source	Rabbit
Reactivity	Human/Mouse/Rat

PRODUCT PROPERTIES

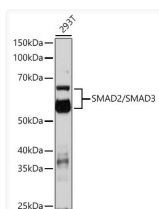
Clonality	Polyclonal
Concentration	Lot specific
Conjugation	Unconjugated
Purification	Affinity purification
Dilution Range	WB:1:500-1:2000 IHC-P:1:50-1:200 IF/ICC:1:50-1:200 ELISA:Recommended starting concentration is 1 μ g/mL. Please optimize the concentration based on your specific assay requirements.
Formulation	PBS with 0.09% Sodium Azide, 50% Glycerol, pH7.3.
Isotype	IgG
Molecular Weight	Protein Mw: 48kDa/52kDa/25kDa/35kDa/43kDa Observed Mw: 52kDa/60kDa
Storage Instruction	Store at -20°C for up to 1 year from the date of receipt, and avoid repeat freeze-thaw cycles.

TARGET INFORMATION

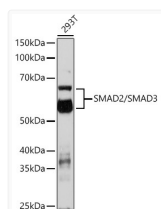
Gene ID	4088 4087
Gene Symbol	SMAD3 SMAD2
UniProt ID	SMAD3_HUMAN SMAD2_HUMAN
Immunogen Region	150-270
Immunogen Sequence	EYAFNLKKDEVCVNPHYQQR VETPVLPPVLVPRHTEILTE LPPLDDYTHSIPENTNFPAG IEPQSNYIPETPPPGYISED GETSDQQLNQSMDTGSPAEL SPTTLSPVNHSLDLQPVTYS E
Specificity	A synthetic peptide corresponding to a sequence within amino acids 150-270 of human SMAD2/SMAD3 (NP_005893.1).

ADDITIONAL INFORMATION

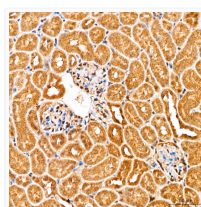
Note STRICTLY FOR FURTHER SCIENTIFIC RESEARCH USE ONLY (RUO). MUST NOT TO BE USED IN DIAGNOSTIC OR THERAPEUTIC APPLICATIONS.



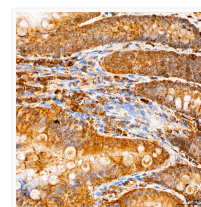
Western blot analysis of various lysates using SMAD2/SMAD3 Rabbit pAb (STJ11101471) at 1:1000 dilution.
Secondary antibody: HRP-conjugated Goat anti-Rabbit IgG (H+L) (STJS000856) at 1:10000 dilution.
Lysates/proteins: 25 μ g per lane.
Blocking buffer: 3% nonfat dry milk in TBST.
Detection: ECL Enhanced Kit
Exposure time: 3min.



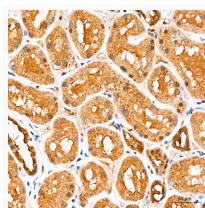
Western blot analysis of various lysates using SMAD2/SMAD3 Rabbit pAb (STJ11101471) at 1:1000 dilution.
Secondary antibody: HRP-conjugated Goat anti-Rabbit IgG (H+L) (STJS000856) at 1:10000 dilution.
Lysates/proteins: 25 μ g per lane.
Blocking buffer: 3% nonfat dry milk in TBST.
Detection: ECL Enhanced Kit
Exposure time: 3min.



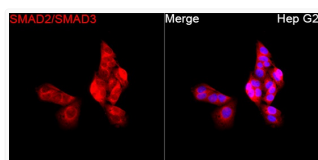
Immunohistochemistry analysis of paraffin-embedded Mouse kidney tissue using SMAD2/SMAD3 Rabbit pAb (STJ11101471) at a dilution of 1:100 (40x lens). High pressure antigen retrieval performed with 0.01M Citrate Buffer (pH 6.0) prior to immunohistochemistry staining.



Immunohistochemistry analysis of paraffin-embedded Rat intestine tissue using SMAD2/SMAD3 Rabbit pAb (STJ11101471) at a dilution of 1:100 (40x lens). High pressure antigen retrieval performed with 0.01M Citrate Buffer (pH 6.0) prior to immunohistochemistry staining.



Immunohistochemistry analysis of paraffin-embedded Human kidney tissue using SMAD2/SMAD3 Rabbit pAb (STJ11101471) at a dilution of 1:100 (40x lens). High pressure antigen retrieval performed with 0.01M Citrate Buffer (pH 6.0) prior to immunohistochemistry staining.



Immunofluorescence analysis of Hep G2 cells using SMAD2/SMAD3 Rabbit pAb (STJ11101471) at a dilution of 1:100 (40x lens). Secondary antibody: Cy3-conjugated Goat anti-Rabbit IgG (H+L) (STJS001166) at 1:500 dilution. Blue: DAPI for nuclear staining.