

Anti-PYM1 antibody (1-204) (STJ11101467)

GENERAL INFORMATION

Product Type	Primary antibodies
Applications	WB/IF/ICC/ELISA
Host / Source	Rabbit
Reactivity	Human/Mouse/Rat

PRODUCT PROPERTIES

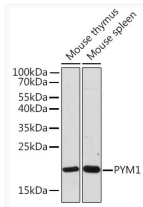
Clonality	Polyclonal
Concentration	Lot specific
Conjugation	Unconjugated
Purification	Affinity purification
Dilution Range	WB:1:500-1:2000 IF/CC:1:50-1:200 ELISA:Recommended starting concentration is 1 Mu g/mL. Please optimize the concentration based on your specific assay requirements.
Formulation	PBS with 0.01% Thimerosal, 50% Glycerol, pH 7.3.
Isotype	IgG
Molecular Weight	Protein Mw: 23kDa Observed Mw: 23kDa
Storage Instruction	Store at -20°C for up to 1 year from the date of receipt, and avoid repeat freeze-thaw cycles.

TARGET INFORMATION

Gene ID	84305
Gene Symbol	PYM1
UniProt ID	PYM1_HUMAN
Immunogen Region	1-204
Immunogen Sequence	MEAAGSPAATETGKYIASTQ RPDGTWRKQRRVKEGYVPQE EVPVYENKYVKFFKSKPELP PGLSPEATAPVTPSRPEGGE PGLSKTAKRNLKRKEKRRQQ QEKGEAEALSRTLDPKVSLEE TAQLPSAPQGSRAAPTAASD QPDSAATTEKAKKIKNLKKK LRQVEELQQRRIQAGEVVSQPS KEQLEKLARRRALEEELEDL ELGL
Specificity	Recombinant fusion protein containing a sequence corresponding to amino acids 1-204 of human PYM1 (NP_115721.1).

ADDITIONAL INFORMATION

Note STRICTLY FOR FURTHER SCIENTIFIC RESEARCH USE ONLY (RUO). MUST NOT TO BE USED IN DIAGNOSTIC OR THERAPEUTIC APPLICATIONS.



Western blot analysis of various lysates using PYM1 Rabbit polyclonal antibody (STJ11101467) at 1:1000 dilution. Secondary antibody: HRP Goat Anti-Rabbit IgG (H+L) (STJS000856) at 1:10000 dilution. Lysates/proteins: 25 Mu g per lane. Blocking buffer: 3% nonfat dry milk in TBST. Detection: ECL Enhanced Kit. Exposure time: 90s.