

## Anti-WWC2 antibody (160-430) (STJ11101466)

### GENERAL INFORMATION

Product Type	Primary antibodies
Applications	WB/IHC-P/ELISA
Host / Source	Rabbit
Reactivity	Human/Mouse/Rat

### PRODUCT PROPERTIES

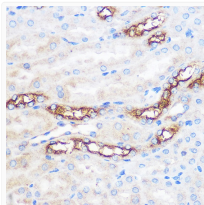
Clonality	Polyclonal
Concentration	Lot specific
Conjugation	Unconjugated
Purification	Affinity purification
Dilution Range	WB:1:500-1:2000 IHC-P:1:50-1:200 ELISA:Recommended starting concentration is 1 $\mu$ g/mL. Please optimize the concentration based on your specific assay requirements.
Formulation	PBS with 0.01% Thimerosal, 50% Glycerol, pH 7.3.
Isotype	IgG
Molecular Weight	Protein Mw: 134kDa Observed Mw: 134kDa
Storage Instruction	Store at -20°C for up to 1 year from the date of receipt, and avoid repeat freeze-thaw cycles.

### TARGET INFORMATION

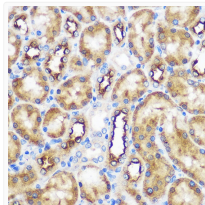
Gene ID	<a href="#">80014</a>
Gene Symbol	<a href="#">WWC2</a>
UniProt ID	<a href="#">WWC2_HUMAN</a>
Immunogen Region	160-430
Immunogen Sequence	DPDILKAEISTTRLRVKLLK RELSQMKQELLYKEQGFETL QQIDKKMSGGQSGYELSEAK AITELKSIRKAISSGEKEK QDLMQSLAKLQERFHLQNI GRSEPDLRCSFVNSHLCLSR QTLDAGSQTSISGDIGVRSR SNLAEKVRLSLQYEEAKRSM ANLKIELSKLDSEAWPGALD IEKEKLMLINEKEELLKELQ FVTPQKRTQDELERLEAERQ RLEEELLSVRGTPSRALAE
Specificity	Recombinant fusion protein containing a sequence corresponding to amino acids 160-430 of human WWC2 (NP_079225.5).

### ADDITIONAL INFORMATION

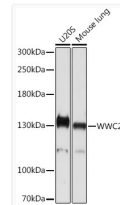
Note **STRICTLY FOR FURTHER SCIENTIFIC RESEARCH USE ONLY (RUO). MUST NOT TO BE USED IN DIAGNOSTIC OR THERAPEUTIC APPLICATIONS.**



Immunohistochemistry analysis of WWC2 in paraffin-embedded Mouse kidney using WWC2 Rabbit polyclonal antibody (STJ11101466) at dilution of 1:100 (40x lens). Perform microwave antigen retrieval with 10 mM PBS buffer pH 7. 2 before commencing with immunohistochemistry staining protocol.



Immunohistochemistry analysis of WWC2 in paraffin-embedded Rat kidney using WWC2 Rabbit polyclonal antibody (STJ11101466) at dilution of 1:100 (40x lens). Perform microwave antigen retrieval with 10 mM PBS buffer pH 7. 2 before commencing with immunohistochemistry staining protocol.



Western blot analysis of various lysates using WWC2 Rabbit polyclonal antibody (STJ11101466) at 1:1000 dilution. Secondary antibody: HRP Goat Anti-Rabbit IgG (H+L) (STJS000856) at 1:10000 dilution. Lysates/proteins: 25  $\mu$ g per lane. Blocking buffer: 3% nonfat dry milk in TBST. Detection: ECL Basic Kit. Exposure time: 5s.