

Anti-APC antibody (1-100) [S6MR] (STJ11101456)

GENERAL INFORMATION

Product Type	Primary antibodies
Applications	WB/IP/ELISA
Host / Source	Rabbit
Reactivity	Human/Mouse/Rat

PRODUCT PROPERTIES

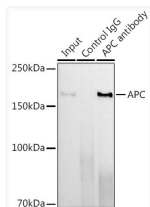
Clonality	Monoclonal
Concentration	Lot specific
Conjugation	Unconjugated
Purification	Affinity purification
Dilution Range	WB:1:1000-1:2000 IP:0.5 Mu g-4 Mu g extracts of whole cells ELISA:Recommended starting concentration is 1 Mu g/mL. Please optimize the concentration based on your specific assay requirements.
Formulation	PBS with 0.02% Sodium Azide, 0.05% BSA, 50% Glycerol, pH 7.3.
Isotype	IgG
Molecular Weight	Protein Mw: 312kDa Observed Mw: 160kDa
Storage Instruction	Store at -20°C for up to 1 year from the date of receipt, and avoid repeat freeze-thaw cycles.

TARGET INFORMATION

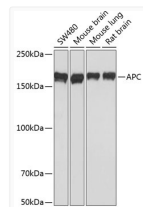
Gene ID	324
Gene Symbol	APC
UniProt ID	APC_HUMAN
Immunogen Region	1-100
Immunogen Sequence	MAAASYDQLLKQVEALKMEN SNLRQELEDNSNHLTKLETE ASNMKVEVLKQLQGSIEDEAM ASSGQIDLLERLKEKLNLDSS NFPGVKLRKMSLSRYSYSRE
Specificity	A synthetic peptide corresponding to a sequence within amino acids 1-100 of human APC (NP_000029.2).

ADDITIONAL INFORMATION

Note **STRICTLY FOR FURTHER SCIENTIFIC RESEARCH USE ONLY (RUO). MUST NOT TO BE USED IN DIAGNOSTIC OR THERAPEUTIC APPLICATIONS.**



Immunoprecipitation analysis of 600 Mu g extracts of Mouse lung using 3 Mu g APC antibody (STJ11101456). Western blot was performed from the immunoprecipitate using APC antibody (STJ11101456) at a dilution of 1:500.



Western blot analysis of various lysates using APC Rabbit monoclonal antibody (STJ11101456) at 1:1000 dilution. Secondary antibody: HRP Goat Anti-Rabbit IgG (H+L) (STJS000856) at 1:10000 dilution. Lysates/proteins: 25 Mu g per lane. Blocking buffer: 3% nonfat dry milk in TBST. Detection: ECL Basic Kit. Exposure time: 3min.