

Anti-AKT1 antibody (381-480) [S3MR] (STJ11101453)

GENERAL INFORMATION

Product Type	Primary antibodies
Applications	WB/IHC-P/IP/ELISA
Host / Source	Rabbit
Reactivity	Human/Mouse/Rat

PRODUCT PROPERTIES

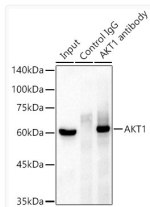
Clonality	Monoclonal
Concentration	Lot specific
Conjugation	Unconjugated
Purification	Affinity purification
Dilution Range	WB:1:2000-1:8000 IHC-P:1:200-1:800 IP:0.5 Mu g-4 Mu g antibody for 200 Mu g-400 Mu g extracts of whole cells ELISA:Recommended starting concentration is 1 Mu g/mL. Please optimize the concentration based on your specific assay requirement
Formulation	PBS with 0.09% Sodium Azide, 0.05% BSA, 50% Glycerol, pH 7.3.
Isotype	IgG
Molecular Weight	Protein Mw: 56kDa Observed Mw: 60kDa
Storage Instruction	Store at -20°C for up to 1 year from the date of receipt, and avoid repeat freeze-thaw cycles.

TARGET INFORMATION

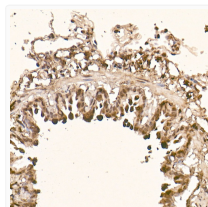
Gene ID	207
Gene Symbol	AKT1
UniProt ID	AKT1_HUMAN
Immunogen Region	381-480
Immunogen Sequence	SGLLKDKPKQRLGGGSEDAK EIMQHRFFAGIVWQHVEK LSPPFKPQVTSETDTRYFDE EFTAQMIIITPPDQDDSMC VDSERRPHFPQFSYASGTA
Specificity	A synthetic peptide corresponding to a sequence within amino acids 381-480 of human AKT1 (P31749).

ADDITIONAL INFORMATION

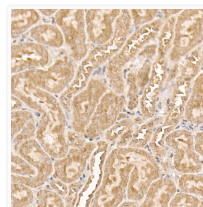
Note STRICTLY FOR FURTHER SCIENTIFIC RESEARCH USE ONLY (RUO). MUST NOT TO BE USED IN DIAGNOSTIC OR THERAPEUTIC APPLICATIONS.



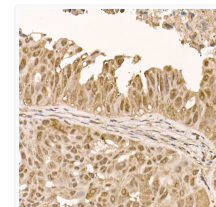
Immunoprecipitation analysis of 300 Mu g extracts from MCF7 cells using 3 Mu g AKT1 Rabbit monoclonal antibody (STJ11101453). Western blot was performed from the immunoprecipitate using AKT1 Rabbit monoclonal antibody (STJ11101453) at a dilution of 1:1000.



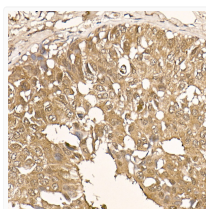
Immunohistochemistry analysis of AKT1 in paraffin-embedded rat lung using AKT1 Rabbit monoclonal antibody (STJ11101453) at dilution of 1:100 (40x lens). Perform high pressure antigen retrieval with 10 mM citrate buffer pH 6.0 before commencing with immunohistochemistry staining protocol.



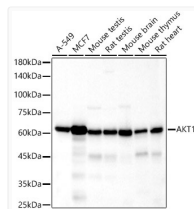
Immunohistochemistry analysis of AKT1 in paraffin-embedded mouse kidney using AKT1 Rabbit monoclonal antibody (STJ11101453) at dilution of 1:100 (40x lens). Perform high pressure antigen retrieval with 10 mM citrate buffer pH 6.0 before commencing with immunohistochemistry staining protocol.



Immunohistochemistry analysis of AKT1 in paraffin-embedded human colon carcinoma using AKT1 Rabbit monoclonal antibody (STJ11101453) at dilution of 1:100 (40x lens). Perform high pressure antigen retrieval with 10 mM citrate buffer pH 6.0 before commencing with immunohistochemistry staining protocol.



Immunohistochemistry analysis of AKT1 in paraffin-embedded human breast cancer using AKT1 Rabbit monoclonal antibody (STJ11101453) at dilution of 1:100 (40x lens). Perform high pressure antigen retrieval with 10 mM citrate buffer pH 6.0 before commencing with immunohistochemistry staining protocol.



Western blot analysis of various lysates, using AKT1 Rabbit monoclonal antibody (STJ11101453) at 1:2000 dilution. Secondary antibody: HRP Goat Anti-Rabbit IgG (H+L) (STJS000856) at 1:10000 dilution. Lysates/proteins: 25 Mu g per lane. Blocking buffer: 3% nonfat dry milk in TBST. Detection: ECL Basic Kit. Exposure time: 25s.