

Anti-EML3 antibody (300-530) (STJ11101449)

GENERAL INFORMATION

Product Type	Primary antibodies
Applications	WB/ELISA
Host / Source	Rabbit
Reactivity	Human

PRODUCT PROPERTIES

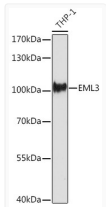
Clonality	Polyclonal
Concentration	Lot specific
Conjugation	Unconjugated
Purification	Affinity purification
Dilution Range	WB:1:500-1:2000 ELISA:Recommended starting concentration is 1 Mu g/mL. Please optimize the concentration based on your specific assay requirements.
Formulation	PBS with 0.01% Thimerosal, 50% Glycerol, pH 7.3.
Isotype	IgG
Molecular Weight	Protein Mw: 95kDa Observed Mw: 95kDa
Storage Instruction	Store at -20°C for up to 1 year from the date of receipt, and avoid repeat freeze-thaw cycles.

TARGET INFORMATION

Gene ID	256364
Gene Symbol	EML3
UniProt ID	EMAL3_HUMAN
Immunogen Region	300-530
Immunogen Sequence	HYRGHTDCVRLAVHPDGVR VASGQTAGVDKDGKPLQPVV HIWDSETLLKLQEIGLGAFE RGVGLAFSAADQGAFLCVV DDSNEHMLS VWDCSRGMKLA EIKSTNDSVLAVGFNPRDSS CIVTSGKSHVHFVNWSGGVG VPGNGTLTRKQGVFGKYKKP KFIPCFVFLPDGDILTGDSE GNILTWGRSPSDSKTPGRGG AKETYGIVAQAHAHEGSIFA LCLRRDGTVLS
Specificity	Recombinant fusion protein containing a sequence corresponding to amino acids 300-530 of human EML3 (NP_694997.2).

ADDITIONAL INFORMATION

Note STRICTLY FOR FURTHER SCIENTIFIC RESEARCH USE ONLY (RUO). MUST NOT TO BE USED IN DIAGNOSTIC OR THERAPEUTIC APPLICATIONS.



Western blot analysis of lysates from THP-1 cells, using EML3 Rabbit polyclonal antibody (STJ11101449) at 1:500 dilution. Secondary antibody: HRP Goat Anti-Rabbit IgG (H+L) (STJS00856) at 1:10000 dilution. Lysates/proteins: 25 Mu g per lane. Blocking buffer: 3% nonfat dry milk in TBST. Detection: ECL Basic Kit. Exposure time: 180s.