

Anti-PABPN1 antibody (1-100) [S7MR] (STJ11101447)

GENERAL INFORMATION

Product Type	Primary antibodies
Applications	WB/IHC-P/IF/ICC/ELISA
Host / Source	Rabbit
Reactivity	Human/Mouse/Rat

PRODUCT PROPERTIES

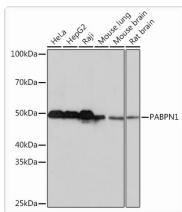
Clonality	Monoclonal
Concentration	Lot specific
Conjugation	Unconjugated
Purification	Affinity purification
Dilution Range	WB:1:1000-1:6000 IHC-P:1:200-1:2000 IF/ICC:1:200-1:2000 ELISA:Recommended starting concentration is 1 µg/mL. Please optimize the concentration based on your specific assay requirements.
Formulation	PBS with 0.02% Sodium Azide, 0.05% BSA, 50% Glycerol, pH 7.3.
Isotype	IgG
Molecular Weight	Protein Mw: 31kDa/33kDa Observed Mw: 50kDa
Storage Instruction	Store at -20°C for up to 1 year from the date of receipt, and avoid repeat freeze-thaw cycles.

TARGET INFORMATION

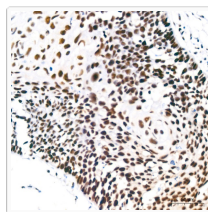
Gene ID	8106
Gene Symbol	PABPN1
UniProt ID	PABP2_HUMAN
Immunogen Region	1-100
Immunogen Sequence	MAAAAAAAAAAGAAGGRGSG PGRRRHLVPGAGGEAGEGAP GGAGDYNGLESEEELEPEEL LLEPEPEPEEEEEPPRPRAP PGAPGPGPGSGAPGSQEEEE
Specificity	A synthetic peptide corresponding to a sequence within amino acids 1-100 of human PABPN1 (Q86U42).

ADDITIONAL INFORMATION

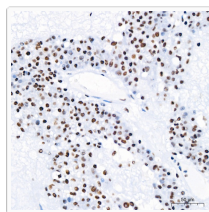
Note	STRICTLY FOR FURTHER SCIENTIFIC RESEARCH USE ONLY (RUO). MUST NOT TO BE USED IN DIAGNOSTIC OR THERAPEUTIC APPLICATIONS.
------	---



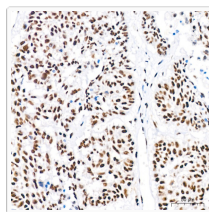
Western blot analysis of extracts of various cell lines, using PABPN1 rabbit monoclonal antibody (STJ11101447) at 1:1000 dilution. Secondary antibody: HRP Goat Anti-rabbit IgG (H+L) (STJS000856) at 1:10000 dilution. Lysates/proteins: 25 μ g per lane. Blocking buffer: 3% non-fat dry milk in TBST. Detection: ECL Basic Kit. Exposure time: 10s.



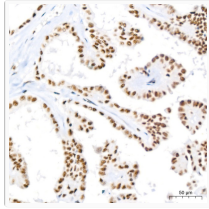
Immunohistochemistry analysis of PABPN1 in paraffin-embedded human cervix cancer tissue using PABPN1 rabbit monoclonal antibody (STJ11101447) at a dilution of 1:200 (40x lens). High pressure antigen retrieval was performed with 0.01 M citrate buffer (pH 6.0) prior to immunohistochemistry staining.



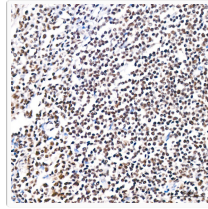
Immunohistochemistry analysis of PABPN1 in paraffin-embedded human liver cancer tissue using PABPN1 rabbit monoclonal antibody (STJ11101447) at a dilution of 1:200 (40x lens). High pressure antigen retrieval was performed with 0.01 M citrate buffer (pH 6.0) prior to immunohistochemistry staining.



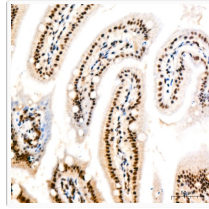
Immunohistochemistry analysis of PABPN1 in paraffin-embedded human lung squamous carcinoma tissue using PABPN1 rabbit monoclonal antibody (STJ11101447) at a dilution of 1:200 (40x lens). High pressure antigen retrieval was performed with 0.01 M citrate buffer (pH 6.0) prior to immunohistochemistry staining.



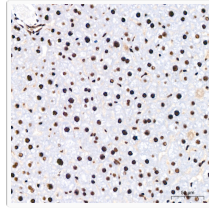
Immunohistochemistry analysis of PABPN1 in paraffin-embedded human thyroid cancer tissue using PABPN1 rabbit monoclonal antibody (STJ11101447) at a dilution of 1:200 (40x lens). High pressure antigen retrieval was performed with 0.01 M citrate buffer (pH 6.0) prior to immunohistochemistry staining.



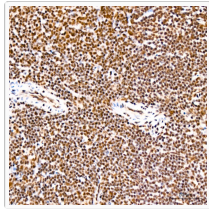
Immunohistochemistry analysis of PABPN1 in paraffin-embedded human tonsil tissue using PABPN1 rabbit monoclonal antibody (STJ11101447) at a dilution of 1:200 (40x lens). High pressure antigen retrieval was performed with 0.01 M citrate buffer (pH 6.0) prior to immunohistochemistry staining.



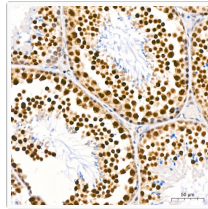
Immunohistochemistry analysis of PABPN1 in paraffin-embedded mouse intestine tissue using PABPN1 rabbit monoclonal antibody (STJ11101447) at a dilution of 1:200 (40x lens). High pressure antigen retrieval was performed with 0.01 M citrate buffer (pH 6.0) prior to immunohistochemistry staining.



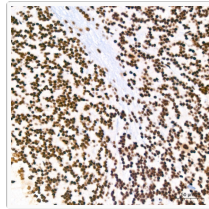
Immunohistochemistry analysis of PABPN1 in paraffin-embedded mouse liver tissue using PABPN1 rabbit monoclonal antibody (STJ11101447) at a dilution of 1:200 (40x lens). High pressure antigen retrieval was performed with 0.01 M citrate buffer (pH 6.0) prior to immunohistochemistry staining.



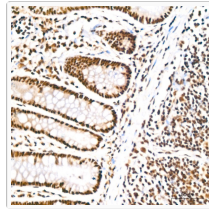
Immunohistochemistry analysis of PABPN1 in paraffin-embedded mouse spleen tissue using PABPN1 rabbit monoclonal antibody (STJ11101447) at a dilution of 1:200 (40x lens). High pressure antigen retrieval was performed with 0.01 M citrate buffer (pH 6.0) prior to immunohistochemistry staining.



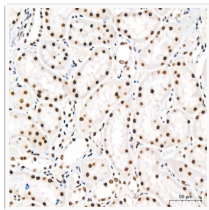
Immunohistochemistry analysis of PABPN1 in paraffin-embedded mouse testis tissue using PABPN1 rabbit monoclonal antibody (STJ11101447) at a dilution of 1:200 (40x lens). High pressure antigen retrieval was performed with 0.01 M citrate buffer (pH 6.0) prior to immunohistochemistry staining.



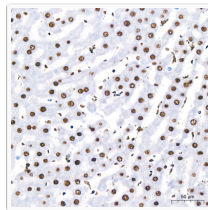
Immunohistochemistry analysis of PABPN1 in paraffin-embedded rat brain tissue using PABPN1 rabbit monoclonal antibody (STJ11101447) at a dilution of 1:200 (40x lens). High pressure antigen retrieval was performed with 0.01 M citrate buffer (pH 6.0) prior to immunohistochemistry staining.



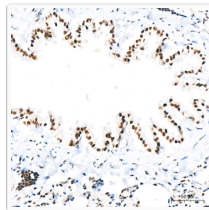
Immunohistochemistry analysis of PABPN1 in paraffin-embedded rat colon tissue using PABPN1 rabbit monoclonal antibody (STJ11101447) at a dilution of 1:200 (40x lens). High pressure antigen retrieval was performed with 0.01 M citrate buffer (pH 6.0) prior to immunohistochemistry staining.



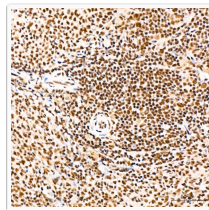
Immunohistochemistry analysis of PABPN1 in paraffin-embedded rat kidney tissue using PABPN1 rabbit monoclonal antibody (STJ11101447) at a dilution of 1:200 (40x lens). High pressure antigen retrieval was performed with 0.01 M citrate buffer (pH 6.0) prior to immunohistochemistry staining.



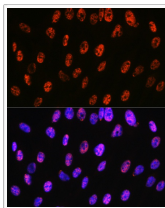
Immunohistochemistry analysis of PABPN1 in paraffin-embedded rat liver tissue using PABPN1 rabbit monoclonal antibody (STJ11101447) at a dilution of 1:200 (40x lens). High pressure antigen retrieval was performed with 0.01 M citrate buffer (pH 6.0) prior to immunohistochemistry staining.



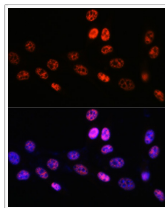
Immunohistochemistry analysis of PABPN1 in paraffin-embedded rat lung tissue using PABPN1 rabbit monoclonal antibody (STJ11101447) at a dilution of 1:200 (40x lens). High pressure antigen retrieval was performed with 0.01 M citrate buffer (pH 6.0) prior to immunohistochemistry staining.



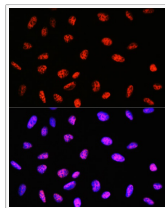
Immunohistochemistry analysis of PABPN1 in paraffin-embedded rat spleen tissue using PABPN1 rabbit monoclonal antibody (STJ11101447) at a dilution of 1:200 (40x lens). High pressure antigen retrieval was performed with 0.01 M citrate buffer (pH 6.0) prior to immunohistochemistry staining.



Immunofluorescence analysis of C6 cells using PABPN1 rabbit monoclonal antibody (STJ11101447) at dilution of 1:100 (40x lens). Blue: DAPI for nuclear staining.



Immunofluorescence analysis of NIH-3T3 cells using PABPN1 rabbit monoclonal antibody (STJ11101447) at dilution of 1:100 (40x lens). Blue: DAPI for nuclear staining.



Immunofluorescence analysis of U-2 OS cells using PABPN1 rabbit monoclonal antibody (STJ11101447) at dilution of 1:100 (40x lens). Blue: DAPI for nuclear staining.