

## Anti-POLG antibody (1140-1239) [S2MR] (STJ11101422)

### GENERAL INFORMATION

Product Type	Primary antibodies
Applications	WB/ELISA
Host / Source	Rabbit
Reactivity	Human/Mouse/Rat

### PRODUCT PROPERTIES

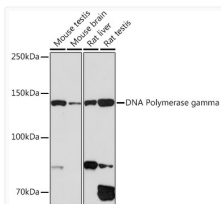
Clonality	Monoclonal
Concentration	Lot specific
Conjugation	Unconjugated
Purification	Affinity purification
Dilution Range	WB:1:1000-1:2000 ELISA:Recommended starting concentration is 1 Mu g/mL. Please optimize the concentration based on your specific assay requirements.
Formulation	PBS with 0.02% Sodium Azide, 0.05% BSA, 50% Glycerol, pH 7.3.
Isotype	IgG
Molecular Weight	Protein Mw: 140kDa Observed Mw: 140kDa
Storage Instruction	Store at -20°C for up to 1 year from the date of receipt, and avoid repeat freeze-thaw cycles.

### TARGET INFORMATION

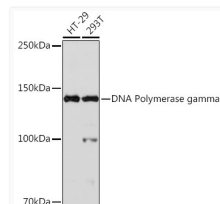
Gene ID	<a href="#">5428</a>
Gene Symbol	<a href="#">POLG</a>
UniProt ID	<a href="#">DPOG1_HUMAN</a>
Immunogen Region	1140-1239
Immunogen Sequence	LVREEDRYRAALALQITNLL TRCMFAYKLG LNDLPQSVAF FSAVDIDRCLRKEVTMDCKT PSNPTGMERRYGIPQGEALD IYQIIE LTKGSLEKRSQPGP
Specificity	A synthetic peptide corresponding to a sequence within amino acids 1140-1239 of human DNA Polymerase gamma (P54098).

### ADDITIONAL INFORMATION

Note **STRICTLY FOR FURTHER SCIENTIFIC RESEARCH USE ONLY (RUO). MUST NOT TO BE USED IN DIAGNOSTIC OR THERAPEUTIC APPLICATIONS.**



Western blot analysis of various lysates using DNA Polymerase gamma Rabbit monoclonal antibody (STJ11101422) at 1:1000 dilution. Secondary antibody: HRP Goat Anti-Rabbit IgG (H+L) (STJS000856) at 1:10000 dilution. Lysates/proteins: 25 Mu g per lane. Blocking buffer: 3% nonfat dry milk in TBST. Detection: ECL Basic Kit. Exposure time: 3min.



Western blot analysis of various lysates using DNA Polymerase gamma Rabbit monoclonal antibody (STJ11101422) at 1:1000 dilution. Secondary antibody: HRP Goat Anti-Rabbit IgG (H+L) (STJS000856) at 1:10000 dilution. Lysates/proteins: 25 Mu g per lane. Blocking buffer: 3% nonfat dry milk in TBST. Detection: ECL Basic Kit. Exposure time: 30s.