

Anti-PCNA antibody (162-261) [S3MR] (STJ11101413)

GENERAL INFORMATION

Product Type	Primary antibodies
Applications	WB/IHC-P/ELISA
Host / Source	Rabbit
Reactivity	Human/Mouse/Rat/African green monkey

PRODUCT PROPERTIES

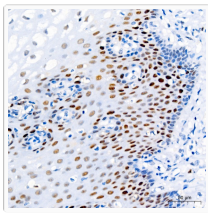
Clonality	Monoclonal
Concentration	Lot specific
Conjugation	Unconjugated
Purification	Affinity purification
Dilution Range	WB:1:5000-1:20000 IHC-P:1:2000-1:10000 ELISA:Recommended starting concentration is 1 Mu g/mL. Please optimize the concentration based on your specific assay requirements.
Formulation	PBS with 0.09% Sodium Azide, 0.05% BSA, 50% Glycerol, pH7.3.
Isotype	IgG
Molecular Weight	Protein Mw: 29kDa Observed Mw: 36kDa
Storage Instruction	Store at -20°C for up to 1 year from the date of receipt, and avoid repeat freeze-thaw cycles.

TARGET INFORMATION

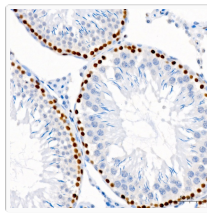
Gene ID	5111
Gene Symbol	PCNA
UniProt ID	PCNA_HUMAN
Immunogen Region	162-261
Immunogen Sequence	CAKDGVKFSASGELGNGNIK LSQTSNVDKEEEAVTIEMNE PVQLTFALRYLNFFTKATPL SSTVTLSMSADVPLVVEYKI ADMGHLKYYLAPKIEDEEGS
Specificity	A synthetic peptide corresponding to a sequence within amino acids 162-261 of human PCNA (NP_002583.1).

ADDITIONAL INFORMATION

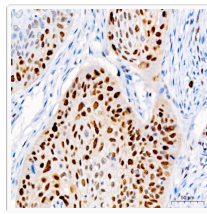
Note	STRICTLY FOR FURTHER SCIENTIFIC RESEARCH USE ONLY (RUO). MUST NOT TO BE USED IN DIAGNOSTIC OR THERAPEUTIC APPLICATIONS.
------	---



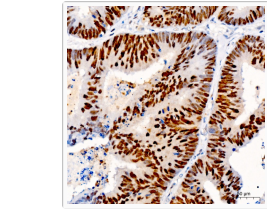
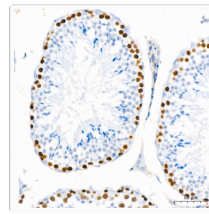
Immunohistochemistry analysis of PCNA in paraffin-embedded human esophagus tissue using PCNA Rabbit monoclonal antibody (STJ11101413) at a dilution of 1:8000 (40x lens). High pressure antigen retrieval was performed with 0.01 M citrate buffer (pH 6.0) prior to immunohistochemistry staining.



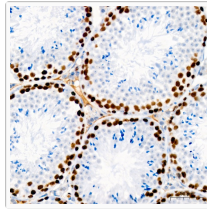
Immunohistochemistry analysis of PCNA in paraffin-embedded rat testis tissue using PCNA Rabbit monoclonal antibody (STJ11101413) at a dilution of 1:8000 (40x lens). High pressure antigen retrieval was performed with 0.01 M citrate buffer (pH 6.0) prior to immunohistochemistry staining.



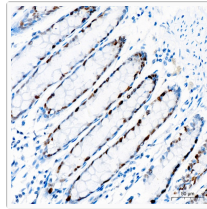
Immunohistochemistry analysis of PCNA in paraffin-embedded human esophageal cancer tissue using PCNA Rabbit monoclonal antibody (STJ11101413) at a dilution of 1:8000 (40x lens). High pressure antigen retrieval was performed with 0.01 M citrate buffer (pH 6.0) prior to immunohistochemistry staining.



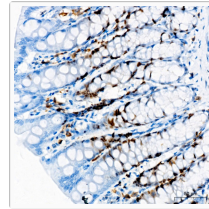
Immunohistochemistry analysis of PCNA in paraffin-embedded mouse testis tissue using PCNA Rabbit monoclonal antibody (STJ11101413) at a dilution of 1:8000 (40x lens). High pressure antigen retrieval was performed with 0.01 M citrate buffer (pH 6.0) prior to immunohistochemistry staining.



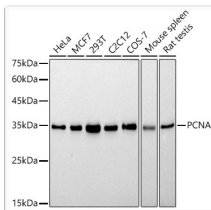
Immunohistochemistry analysis of PCNA in paraffin-embedded human colon tissue using PCNA Rabbit monoclonal antibody (STJ11101413) at a dilution of 1:8000 (40x lens). High pressure antigen retrieval was performed with 0.01 M citrate buffer (pH 6.0) prior to immunohistochemistry staining.



Immunohistochemistry analysis of PCNA in paraffin-embedded rat colon tissue using PCNA Rabbit monoclonal antibody (STJ11101413) at a dilution of 1:8000 (40x lens). High pressure antigen retrieval was performed with 0.01 M citrate buffer (pH 6.0) prior to immunohistochemistry staining.



Immunohistochemistry analysis of PCNA in paraffin-embedded human colon tissue using PCNA Rabbit monoclonal antibody (STJ11101413) at a dilution of 1:8000 (40x lens). High pressure antigen retrieval was performed with 0.01 M citrate buffer (pH 6.0) prior to immunohistochemistry staining.



Western blot analysis of various lysates, using PCNA Rabbit monoclonal antibody (STJ11101413) at 1:1000 dilution. Secondary antibody: HRP Goat Anti-Rabbit IgG (H+L) (STJS000856) at 1:10000 dilution. Lysates/proteins: 25 μg per lane. Blocking buffer: 3% nonfat dry milk in TBST. Detection: ECL Basic Kit. Exposure time: 30s.