

## Anti-AGR2 antibody (1-100) [S2MR] (STJ11101412)

### GENERAL INFORMATION

Product Type	Primary antibodies
Applications	WB/IF/ICC/ELISA
Host / Source	Rabbit
Reactivity	Human/Mouse

### PRODUCT PROPERTIES

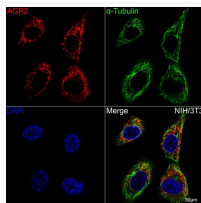
Clonality	Monoclonal
Concentration	Lot specific
Conjugation	Unconjugated
Purification	Affinity purification
Dilution Range	WB:1:500-1:2000 IF/CC:1:50-1:200 ELISA:Recommended starting concentration is 1 Mu g/mL. Please optimize the concentration based on your specific assay requirements.
Formulation	PBS with 0.02% Sodium Azide, 0.05% BSA, 50% Glycerol, pH 7.3.
Isotype	IgG
Molecular Weight	Protein Mw: 20kDa Observed Mw: 18kDa
Storage Instruction	Store at -20°C for up to 1 year from the date of receipt, and avoid repeat freeze-thaw cycles.

### TARGET INFORMATION

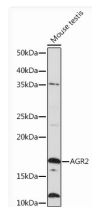
Gene ID	<a href="#">10551</a>
Gene Symbol	<a href="#">AGR2</a>
UniProt ID	<a href="#">AGR2_HUMAN</a>
Immunogen Region	1-100
Immunogen Sequence	MEKIPVSAFLLLVALSYLEA RDTTVKPGAKKDTKDSRPKL PQTLSRGWGDQLIWTQTYEE ALYKSKTSNKPLMIHHLDE CPHSQALKKVFVAENKEIQKL
Specificity	A synthetic peptide corresponding to a sequence within amino acids 1-100 of human AGR2 (O95994).

### ADDITIONAL INFORMATION

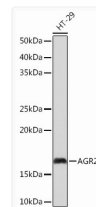
Note STRICTLY FOR FURTHER SCIENTIFIC RESEARCH USE ONLY (RUO). MUST NOT TO BE USED IN DIAGNOSTIC OR THERAPEUTIC APPLICATIONS.



Confocal imaging of NIH/3T3 cells using AGR2 Rabbit monoclonal antibody (STJ11101412, dilution 1:100) (Green). The cells were counterstained with Alpha-tubulin (ubiquitous) chain Rabbit monoclonal antibody (STJS000856) at 1:10000 dilution (Red). DAPI was used for nuclear staining (blue). Objective: 60x.



Western blot analysis of extracts of Mouse testis, using AGR2 Rabbit monoclonal antibody (STJ11101412) at 1: 1000 dilution. Secondary antibody: HRP Goat Anti-Rabbit IgG (H+L) (STJS000856) at 1:10000 dilution. Lysates/proteins: 25 Mu g per lane. Blocking buffer: 3% nonfat dry milk in TBST. Detection: ECL Basic Kit. Exposure time: 3min.



Western blot analysis of extracts of HT-29 cells, using AGR2 Rabbit monoclonal antibody (STJ11101412) at 1: 1000 dilution. Secondary antibody: HRP Goat Anti-Rabbit IgG (H+L) (STJS000856) at 1:10000 dilution. Lysates/proteins: 25 Mu g per lane. Blocking buffer: 3% nonfat dry milk in TBST. Detection: ECL Basic Kit. Exposure time: 10s.