

Anti-FBP1 antibody (239-338) [S2MR] (STJ11101382)

GENERAL INFORMATION

Product Type	Primary antibodies
Applications	WB/IF/ICC/ELISA
Host / Source	Rabbit
Reactivity	Human/Mouse/Rat

PRODUCT PROPERTIES

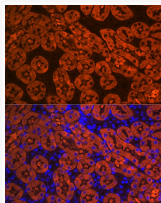
Clonality	Monoclonal
Concentration	Lot specific
Conjugation	Unconjugated
Purification	Affinity purification
Dilution Range	WB:1:1000-1:6000 IF/CC:1:100-1:400 ELISA:Recommended starting concentration is 1 µg/mL. Please optimize the concentration based on your specific assay requirements.
Formulation	PBS with 0.02% Sodium Azide, 0.05% BSA, 50% Glycerol, pH 7.3.
Isotype	IgG
Molecular Weight	Protein Mw: 37kDa Observed Mw: 40kDa
Storage Instruction	Store at -20°C for up to 1 year from the date of receipt, and avoid repeat freeze-thaw cycles.

TARGET INFORMATION

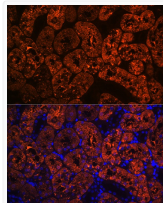
Gene ID	2203
Gene Symbol	FBP1
UniProt ID	F16P1_HUMAN
Immunogen Region	239-338
Immunogen Sequence	APYGARYVGSMDVADVHRTL V YGGIFLYPANKKSPNGKLRL LYECNPMAYVMEKAGGMATT GKEAVLDVIPTDIHQRAPVI LGSPDDVLEFLKVYEKHSQAQ
Specificity	A synthetic peptide corresponding to a sequence within amino acids 239-338 of human FBP1 (P09467).

ADDITIONAL INFORMATION

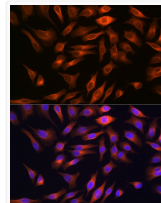
Note STRICTLY FOR FURTHER SCIENTIFIC RESEARCH USE ONLY (RUO). MUST NOT TO BE USED IN DIAGNOSTIC OR THERAPEUTIC APPLICATIONS.



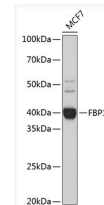
Immunofluorescence analysis of mouse kidney using FBP1 Rabbit monoclonal antibody (STJ11101382) at dilution of 1:100 (40x lens). Blue: DAPI for nuclear staining.



Immunofluorescence analysis of rat kidney using FBP1 Rabbit monoclonal antibody (STJ11101382) at dilution of 1:100 (40x lens). Blue: DAPI for nuclear staining.



Immunofluorescence analysis of HeLa cells using FBP1 Rabbit monoclonal antibody (STJ11101382) at dilution of 1:100 (40x lens). Blue: DAPI for nuclear staining.



Western blot analysis of extracts of MCF7 cells, using FBP1 Rabbit monoclonal antibody (STJ11101382) at 1:1000 dilution. Secondary antibody: HRP Goat Anti-Rabbit IgG (H+L) (STJS000856) at 1:10000 dilution. Lysates/proteins: 25 µg per lane. Blocking buffer: 3% nonfat dry milk in TBST. Detection: ECL Basic Kit. Exposure time: 5s.