

Anti-MITF antibody (387-509) [S9MR] (STJ11101379)

GENERAL INFORMATION

Product Type	Primary antibodies
Applications	IF/ICC/ELISA
Host / Source	Rabbit
Reactivity	Human/Mouse/Rat

PRODUCT PROPERTIES

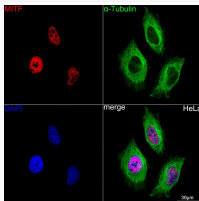
Clonality	Monoclonal
Concentration	Lot specific
Conjugation	Unconjugated
Purification	Affinity purification
Dilution Range	IF/ICC:1:50-1:200 ELISA: Recommended starting concentration is 1 µg/mL. Please optimize the concentration based on your specific assay requirements.
Formulation	PBS with 0.02% Sodium Azide, 0.05% BSA, 50% Glycerol, pH 7.3.
Isotype	IgG
Molecular Weight	Protein Mw: 59kDa Observed Mw: 59kDa
Storage Instruction	Store at -20°C for up to 1 year from the date of receipt, and avoid repeat freeze-thaw cycles.

TARGET INFORMATION

Gene ID	4286
Gene Symbol	MITF
UniProt ID	MITF_HUMAN
Immunogen Region	387-509
Immunogen Sequence	HLLLRIQELEMQARAHGLSL IPSTGLCSPDLVNRIKQEP VLENCSDLLQHHADLTCTT TLDLTDGTITFNNNLGTGTE ANQAYSVP TKMGSKLEDILM DDTLSPVGVTDPLLSSVSPG ASK
Specificity	Recombinant fusion protein containing a sequence corresponding to amino acids 387-509 of human MITF (O75030).

ADDITIONAL INFORMATION

Note STRICTLY FOR FURTHER SCIENTIFIC RESEARCH USE ONLY (RUO). MUST NOT TO BE USED IN DIAGNOSTIC OR THERAPEUTIC APPLICATIONS.



Confocal imaging of HeLa cells using MITF Rabbit monoclonal antibody (STJ11101379, dilution 1:100) (Red). The cells were counterstained with Alpha-Tubulin Mouse monoclonal antibody (dilution 1:400) (Green). DAPI was used for nuclear staining (blue). Objective: 60x.