

Anti-COL10A1 antibody (500-600) [S8MR] (STJ11101378)

GENERAL INFORMATION

Product Type	Primary antibodies
Applications	WB/ELISA
Host / Source	Rabbit
Reactivity	Mouse/Rat

PRODUCT PROPERTIES

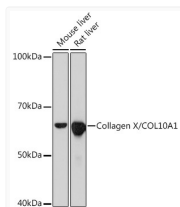
Clonality	Monoclonal
Concentration	Lot specific
Conjugation	Unconjugated
Purification	Affinity purification
Dilution Range	WB:1:1000-1:6000 ELISA:Recommended starting concentration is 1 µg/mL. Please optimize the concentration based on your specific assay requirements.
Formulation	PBS with 0.02% Sodium Azide, 0.05% BSA, 50% Glycerol, pH 7.3.
Isotype	IgG
Molecular Weight	Protein Mw: 66kDa Observed Mw: 66kDa
Storage Instruction	Store at -20°C for up to 1 year from the date of receipt, and avoid repeat freeze-thaw cycles.

TARGET INFORMATION

Gene ID	1300
Gene Symbol	COL10A1
UniProt ID	COAA1_HUMAN
Immunogen Region	500-600
Immunogen Sequence	HSGEPGLPGPPGPPGPPGQA VMPEGFKAGQRPSLSGTPL V SANQGVGTGMPVSAFTVILS KAYPAIGTPIPFDKILYNRQ QHYDPRTGIFTQIPGIYYF S
Specificity	A synthetic peptide corresponding to a sequence within amino acids 500-600 of human Collagen X/COL10A1 (Q03692).

ADDITIONAL INFORMATION

Note STRICTLY FOR FURTHER SCIENTIFIC RESEARCH USE ONLY (RUO). MUST NOT TO BE USED IN DIAGNOSTIC OR THERAPEUTIC APPLICATIONS.



Western blot analysis of various lysates using Collagen X/COL10A1 Rabbit monoclonal antibody (STJ11101378) at 1:1000 dilution. Secondary antibody: HRP Goat Anti-Rabbit IgG (H+L) (STJS000856) at 1:10000 dilution. Lysates/proteins: 25 µg per lane. Blocking buffer: 3% nonfat dry milk in TBST. Detection: ECL Basic Kit. Exposure time: 10s.