

## Anti-DDB2 antibody (220-427) [S0MR] (STJ11101370)

### GENERAL INFORMATION

Product Type	Primary antibodies
Applications	WB/ELISA
Host / Source	Rabbit
Reactivity	Human/Mouse

### PRODUCT PROPERTIES

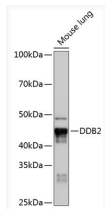
Clonality	Monoclonal
Concentration	Lot specific
Conjugation	Unconjugated
Purification	Affinity purification
Dilution Range	WB:1:1000-1:2000 ELISA:Recommended starting concentration is 1 Mu g/mL. Please optimize the concentration based on your specific assay requirements.
Formulation	PBS with 0.02% Sodium Azide, 0.05% BSA, 50% Glycerol, pH 7.3.
Isotype	IgG
Molecular Weight	Protein Mw: 48kDa Observed Mw: 48kDa
Storage Instruction	Store at -20°C for up to 1 year from the date of receipt, and avoid repeat freeze-thaw cycles.

### TARGET INFORMATION

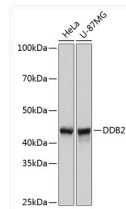
Gene ID	<a href="#">1643</a>
Gene Symbol	<a href="#">DDB2</a>
UniProt ID	<a href="#">DDB2_HUMAN</a>
Immunogen Region	220-427
Immunogen Sequence	DNVGNVILLNMDGKELWNL R M H K K K V T H V A L N P C C D W F L A T A S V D Q T V K I W D L R Q V R G K A S F L Y S L P H R H P V N A A C F S P D G A R L L T T D Q K S E I R V Y S A S Q W D C P L G L I P H P H R H F Q H L T P I K A A W H P R Y N L I V G R Y P D P N F K S C T P Y E L R T I D V F D G N S G K M M C Q L Y D P E S S G I S S L N E F N P M G D T L A S A M G Y H I L I W S Q E E A R T R K
Specificity	Recombinant fusion protein containing a sequence corresponding to amino acids 220-427 of human DDB2 (Q92466).

### ADDITIONAL INFORMATION

Note **STRICTLY FOR FURTHER SCIENTIFIC RESEARCH USE ONLY (RUO). MUST NOT TO BE USED IN DIAGNOSTIC OR THERAPEUTIC APPLICATIONS.**



Western blot analysis of extracts of Mouse lung, using DDB2 Rabbit monoclonal antibody (STJ11101370) at 1:1000 dilution. Secondary antibody: HRP Goat Anti-Rabbit IgG (H+L) (STJS000856) at 1:10000 dilution. Lysates/proteins: 25 Mu g per lane. Blocking buffer: 3% nonfat dry milk in TBST. Detection: ECL Basic Kit. Exposure time: 3min.



Western blot analysis of extracts of various cell lines, using DDB2 Rabbit monoclonal antibody (STJ11101370) at 1:1000 dilution. Secondary antibody: HRP Goat Anti-Rabbit IgG (H+L) (STJS000856) at 1:10000 dilution. Lysates/proteins: 25 Mu g per lane. Blocking buffer: 3% nonfat dry milk in TBST. Detection: ECL Basic Kit. Exposure time: 3s.